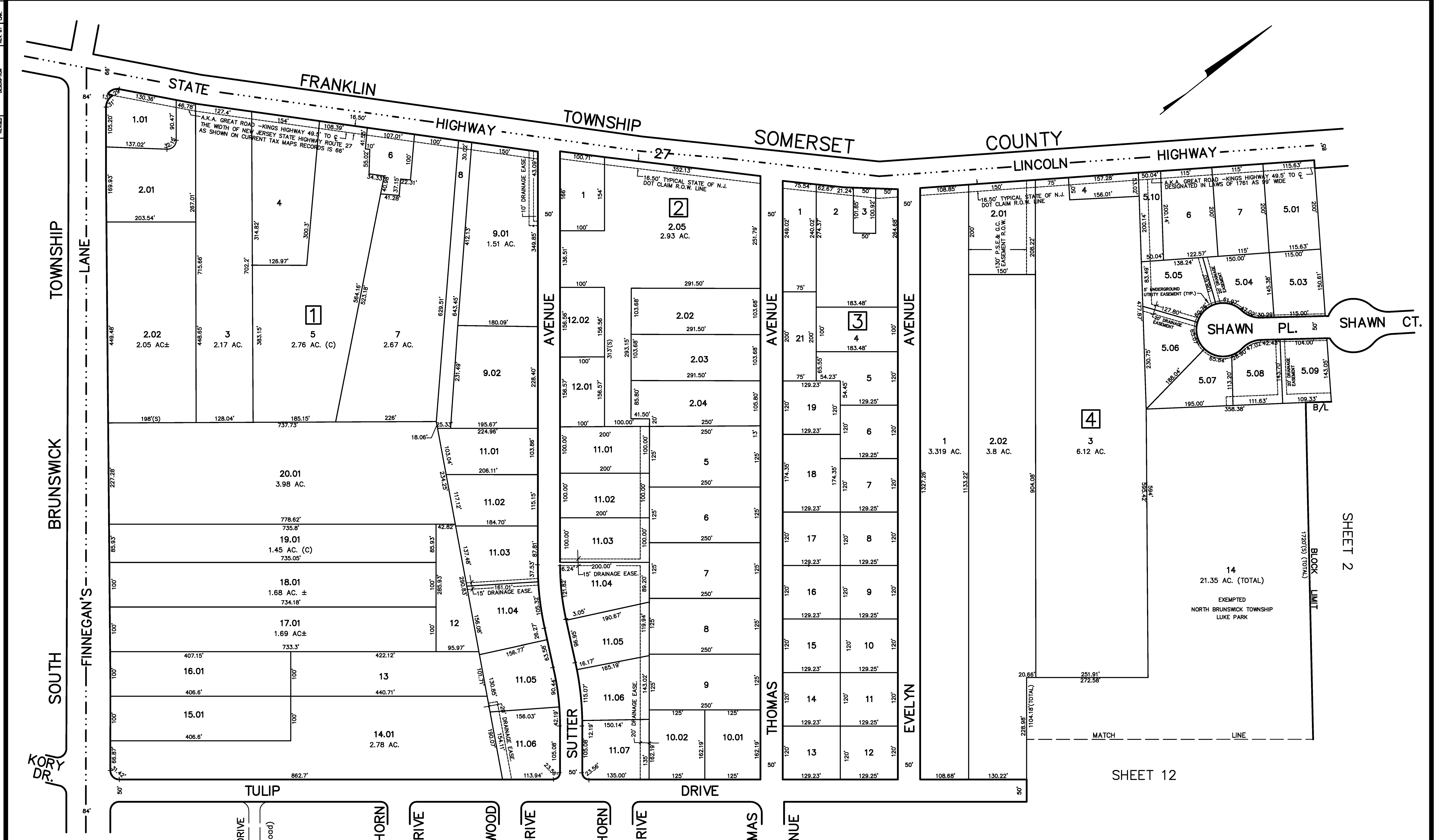


REV.	BY	DESCRIPTION
2/2008	NEW	1.2, 20.12, 20.02, 20.05, 20.02, 20.03, 20.04, 20.05, 20.06, 20.07, 20.08, 20.09, 20.10, 20.11, 20.12, 20.13, 20.14, 20.15, 20.16, 20.17, 20.18, 20.19, 20.20, 20.21, 20.22, 20.23, 20.24, 20.25, 20.26, 20.27, 20.28, 20.29, 20.30, 20.31, 20.32, 20.33, 20.34, 20.35, 20.36, 20.37, 20.38, 20.39, 20.40, 20.41, 20.42, 20.43, 20.44, 20.45, 20.46, 20.47, 20.48, 20.49, 20.50, 20.51, 20.52, 20.53, 20.54, 20.55, 20.56, 20.57, 20.58, 20.59, 20.60, 20.61, 20.62, 20.63, 20.64, 20.65, 20.66, 20.67, 20.68, 20.69, 20.70, 20.71, 20.72, 20.73, 20.74, 20.75, 20.76, 20.77, 20.78, 20.79, 20.80, 20.81, 20.82, 20.83, 20.84, 20.85, 20.86, 20.87, 20.88, 20.89, 20.90, 20.91, 20.92, 20.93, 20.94, 20.95, 20.96, 20.97, 20.98, 20.99, 21.00



SHEET 13

SHEET 12

SHEET 2

NEW JERSEY DEPARTMENT OF THE TREASURY  
DIVISION OF TAXATION  
PROPERTY ADMINISTRATION  
APPROVED AS A TAX MAP PURSUANT TO THE AUTHORITY OF  
N.J.S.A. 54:15-8 & 15-9  
FOR THE DIRECTOR, DIVISION OF TAXATION  
*James S. ...* C.T.A.  
WILLIAM S. ... C.T.A.  
DATE: MAY 4 - 2000 SERIAL NO. 789

**TAX MAP**  
TOWNSHIP OF NORTH BRUNSWICK  
MIDDLESEX COUNTY, NEW JERSEY  
SCALE : 1" = 100'  
JUNE 1998  
**RAYMOND E. BORUP JR., P.L.S.**  
CME ASSOCIATES  
3141 BORDENTOWN AVENUE, PARLIN  
NEW JERSEY, 08859