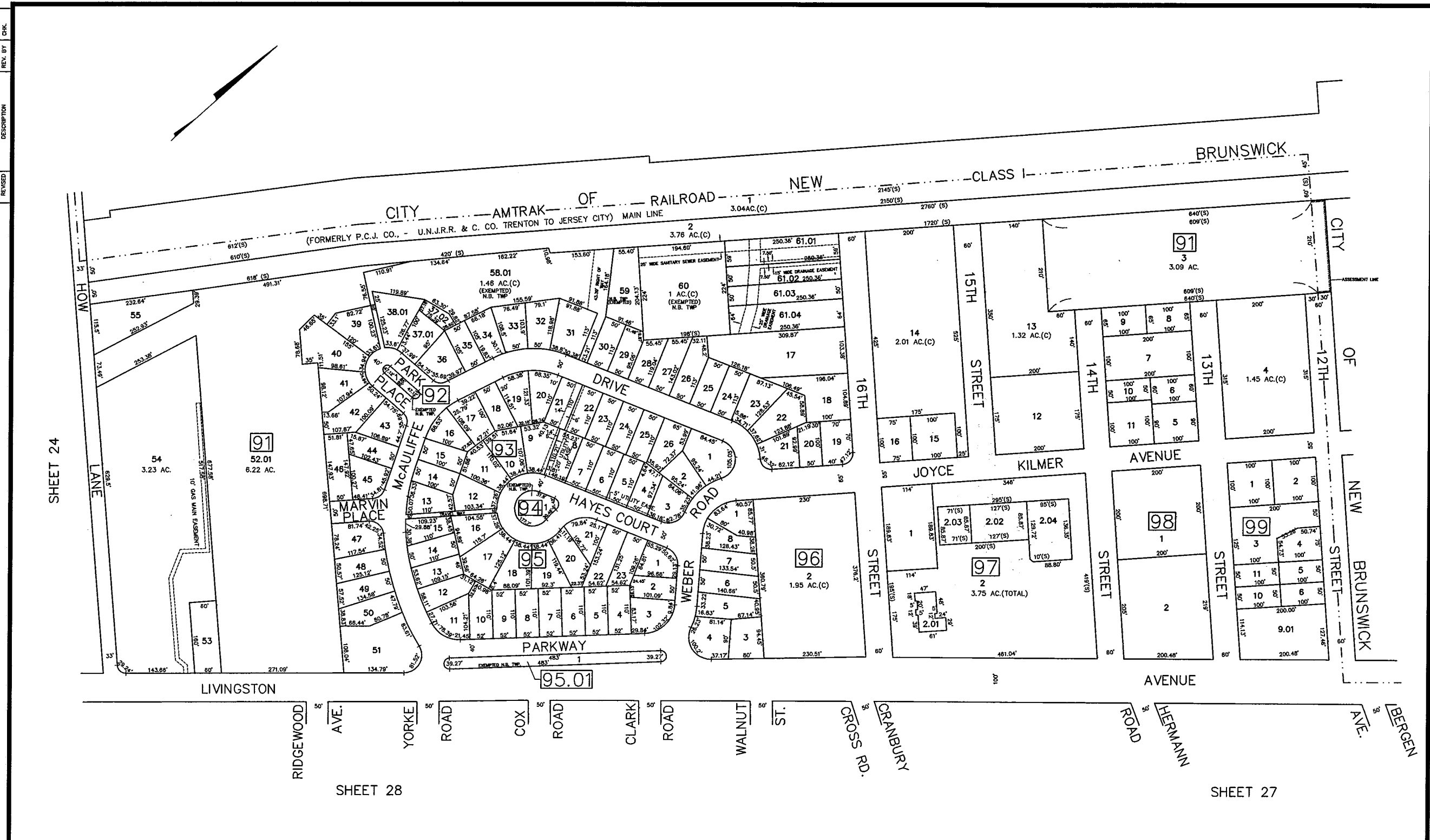


REVISED	4/2004	REV. BY	CHK.
DESCRIPTION	REV. BY	CHK.	
NEW LOT 9.01			
7.68 AC.			
CONSOLIDATED			
7.68 AC.			
NEW LOT 9.01			
7.68 AC.			
CONSOLIDATED			
7.68 AC.			
NEW LOT 9.01			
7.68 AC.			
CONSOLIDATED			
7.68 AC.			



SHEET 24

SHEET 28

SHEET 27

NEW JERSEY DEPARTMENT OF THE TREASURY
 DIVISION OF TAXATION
 PROPERTY APPRAISAL
 APPROVED AS A TAX MAP FOR THE PURPOSES OF THE AUTHORITY OF
 N.J.A.C. 17:27 AND 17:28
 FOR THE TOWNSHIP OF NORTH BRUNSWICK
 James S. [Signature]
 COUNTY CLERK, BERGEN COUNTY
 DATE: MAY 1, 2000. SERIAL NO. 789

TAX MAP
 TOWNSHIP OF NORTH BRUNSWICK
 MIDDLESEX COUNTY, NEW JERSEY
 SCALE : 1" = 100' JUNE 1998
 RAYMOND E. BORUP JR., P.L.S.
 CME ASSOCIATES
 3141 BORDENTOWN AVENUE, PARLIN
 NEW JERSEY, 08859