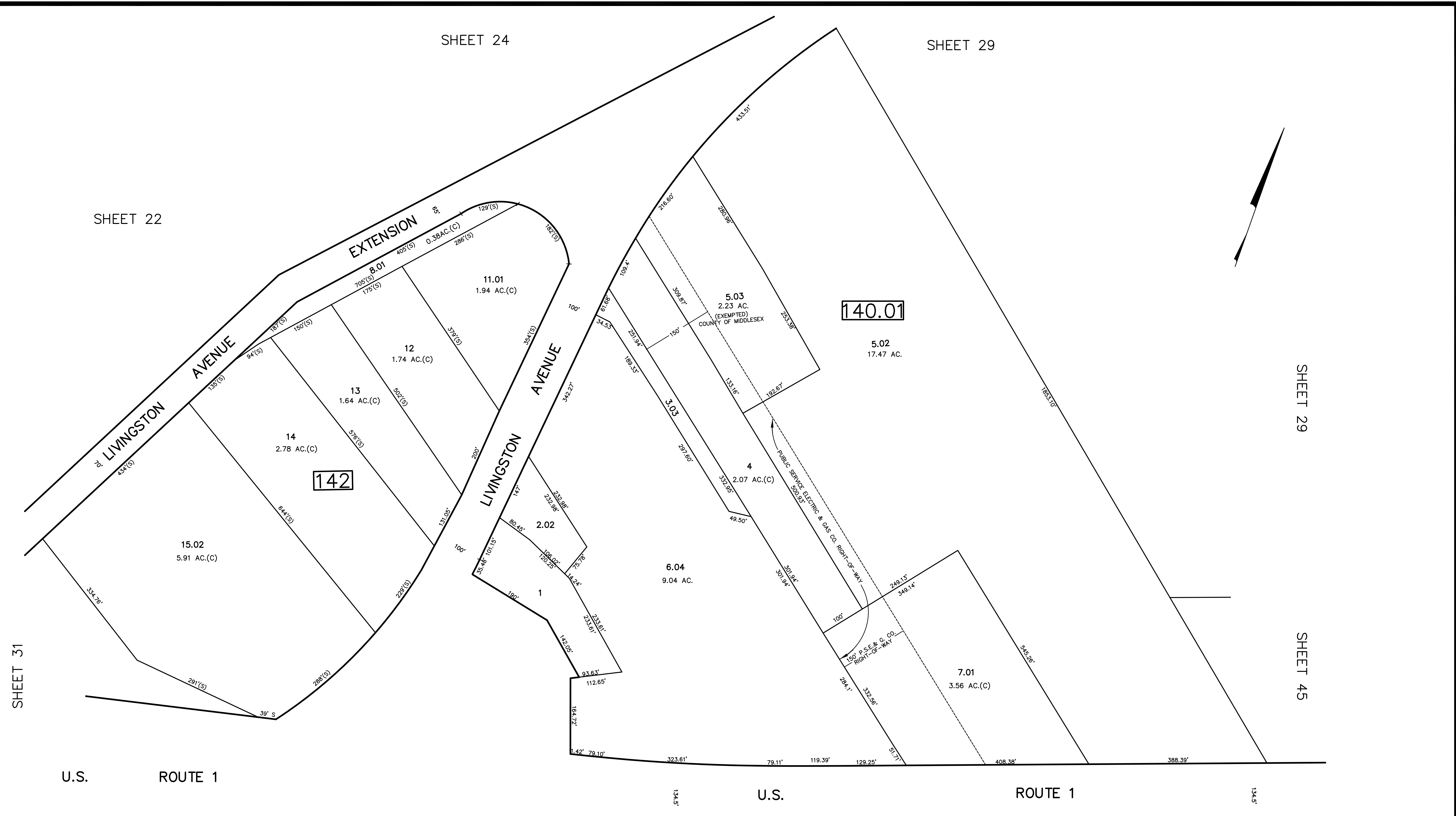


REVISED	DESCRIPTION	REV. BY	CHK.
2/2007	REVISIONS TO THE TAX MAP		
1/2004	REVISIONS TO THE TAX MAP		
1/2003	REVISIONS TO THE TAX MAP		
1/2002	REVISIONS TO THE TAX MAP		
1/2001	REVISIONS TO THE TAX MAP		
1/2000	REVISIONS TO THE TAX MAP		
1/1999	REVISIONS TO THE TAX MAP		
1/1998	REVISIONS TO THE TAX MAP		
1/1997	REVISIONS TO THE TAX MAP		
1/1996	REVISIONS TO THE TAX MAP		
1/1995	REVISIONS TO THE TAX MAP		
1/1994	REVISIONS TO THE TAX MAP		
1/1993	REVISIONS TO THE TAX MAP		
1/1992	REVISIONS TO THE TAX MAP		
1/1991	REVISIONS TO THE TAX MAP		
1/1990	REVISIONS TO THE TAX MAP		
1/1989	REVISIONS TO THE TAX MAP		
1/1988	REVISIONS TO THE TAX MAP		
1/1987	REVISIONS TO THE TAX MAP		
1/1986	REVISIONS TO THE TAX MAP		
1/1985	REVISIONS TO THE TAX MAP		
1/1984	REVISIONS TO THE TAX MAP		
1/1983	REVISIONS TO THE TAX MAP		
1/1982	REVISIONS TO THE TAX MAP		
1/1981	REVISIONS TO THE TAX MAP		
1/1980	REVISIONS TO THE TAX MAP		
1/1979	REVISIONS TO THE TAX MAP		
1/1978	REVISIONS TO THE TAX MAP		
1/1977	REVISIONS TO THE TAX MAP		
1/1976	REVISIONS TO THE TAX MAP		
1/1975	REVISIONS TO THE TAX MAP		
1/1974	REVISIONS TO THE TAX MAP		
1/1973	REVISIONS TO THE TAX MAP		
1/1972	REVISIONS TO THE TAX MAP		
1/1971	REVISIONS TO THE TAX MAP		
1/1970	REVISIONS TO THE TAX MAP		
1/1969	REVISIONS TO THE TAX MAP		
1/1968	REVISIONS TO THE TAX MAP		
1/1967	REVISIONS TO THE TAX MAP		
1/1966	REVISIONS TO THE TAX MAP		
1/1965	REVISIONS TO THE TAX MAP		
1/1964	REVISIONS TO THE TAX MAP		
1/1963	REVISIONS TO THE TAX MAP		
1/1962	REVISIONS TO THE TAX MAP		
1/1961	REVISIONS TO THE TAX MAP		
1/1960	REVISIONS TO THE TAX MAP		
1/1959	REVISIONS TO THE TAX MAP		
1/1958	REVISIONS TO THE TAX MAP		
1/1957	REVISIONS TO THE TAX MAP		
1/1956	REVISIONS TO THE TAX MAP		
1/1955	REVISIONS TO THE TAX MAP		
1/1954	REVISIONS TO THE TAX MAP		
1/1953	REVISIONS TO THE TAX MAP		
1/1952	REVISIONS TO THE TAX MAP		
1/1951	REVISIONS TO THE TAX MAP		
1/1950	REVISIONS TO THE TAX MAP		
1/1949	REVISIONS TO THE TAX MAP		
1/1948	REVISIONS TO THE TAX MAP		
1/1947	REVISIONS TO THE TAX MAP		
1/1946	REVISIONS TO THE TAX MAP		
1/1945	REVISIONS TO THE TAX MAP		
1/1944	REVISIONS TO THE TAX MAP		
1/1943	REVISIONS TO THE TAX MAP		
1/1942	REVISIONS TO THE TAX MAP		
1/1941	REVISIONS TO THE TAX MAP		
1/1940	REVISIONS TO THE TAX MAP		
1/1939	REVISIONS TO THE TAX MAP		
1/1938	REVISIONS TO THE TAX MAP		
1/1937	REVISIONS TO THE TAX MAP		
1/1936	REVISIONS TO THE TAX MAP		
1/1935	REVISIONS TO THE TAX MAP		
1/1934	REVISIONS TO THE TAX MAP		
1/1933	REVISIONS TO THE TAX MAP		
1/1932	REVISIONS TO THE TAX MAP		
1/1931	REVISIONS TO THE TAX MAP		
1/1930	REVISIONS TO THE TAX MAP		
1/1929	REVISIONS TO THE TAX MAP		
1/1928	REVISIONS TO THE TAX MAP		
1/1927	REVISIONS TO THE TAX MAP		
1/1926	REVISIONS TO THE TAX MAP		
1/1925	REVISIONS TO THE TAX MAP		
1/1924	REVISIONS TO THE TAX MAP		
1/1923	REVISIONS TO THE TAX MAP		
1/1922	REVISIONS TO THE TAX MAP		
1/1921	REVISIONS TO THE TAX MAP		
1/1920	REVISIONS TO THE TAX MAP		
1/1919	REVISIONS TO THE TAX MAP		
1/1918	REVISIONS TO THE TAX MAP		
1/1917	REVISIONS TO THE TAX MAP		
1/1916	REVISIONS TO THE TAX MAP		
1/1915	REVISIONS TO THE TAX MAP		
1/1914	REVISIONS TO THE TAX MAP		
1/1913	REVISIONS TO THE TAX MAP		
1/1912	REVISIONS TO THE TAX MAP		
1/1911	REVISIONS TO THE TAX MAP		
1/1910	REVISIONS TO THE TAX MAP		
1/1909	REVISIONS TO THE TAX MAP		
1/1908	REVISIONS TO THE TAX MAP		
1/1907	REVISIONS TO THE TAX MAP		
1/1906	REVISIONS TO THE TAX MAP		
1/1905	REVISIONS TO THE TAX MAP		
1/1904	REVISIONS TO THE TAX MAP		
1/1903	REVISIONS TO THE TAX MAP		
1/1902	REVISIONS TO THE TAX MAP		
1/1901	REVISIONS TO THE TAX MAP		
1/1900	REVISIONS TO THE TAX MAP		



SHEET 22 SHEET 24 SHEET 29 SHEET 31 SHEET 39 SHEET 45

U.S. ROUTE 1 U.S. ROUTE 1

LIVINGSTON AVE. EXTENSION BOICE DR. BISHOP BLVD.

SHEET 44

NEW JERSEY DEPARTMENT OF THE TREASURY
 DIVISION OF TAXATION
 PROPERTY ADJUSTMENT
 APPROVED AS A TAX MAP PURSUANT TO THE AUTHORITY OF
 N.J.S.A. 54:15 & 54:21
 FOR THE DIRECTOR OF PROPERTY TAXATION

James S. ... C.T.A.
William E. ... C.T.A.

DATE: MAY 4 - 2000 SERIAL NO. 789

TAX MAP
 TOWNSHIP OF NORTH BRUNSWICK
 MIDDLESEX COUNTY, NEW JERSEY
 SCALE: 1" = 100' JUNE 1998
 RAYMOND E. BORUP JR., P.L.S.
 CME ASSOCIATES
 3141 BORDENTOWN AVENUE, PARLIN
 NEW JERSEY, 08859