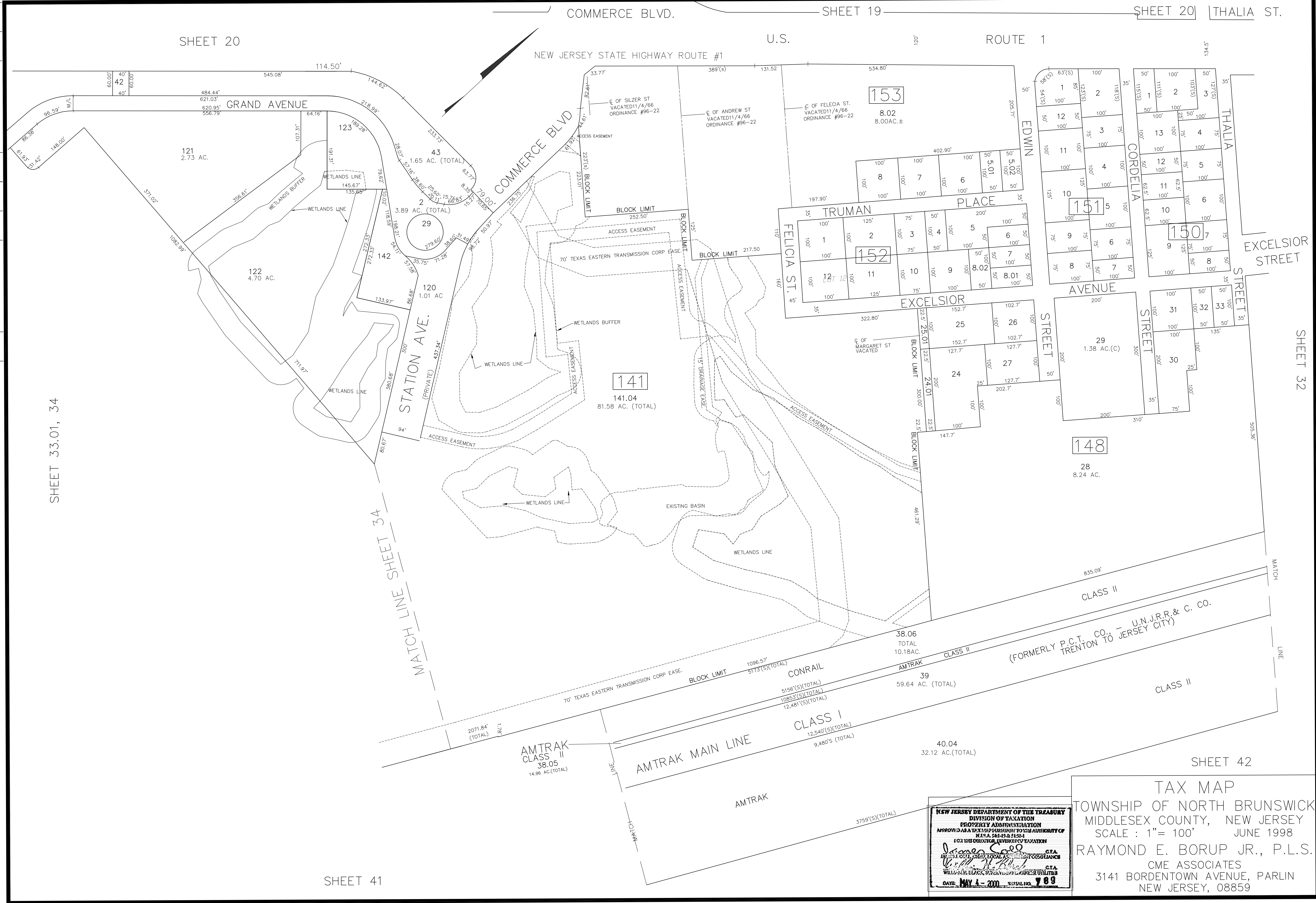


R.R.	DESCRIPTION	REVISED	REV. BY	CHK.
2/2015	BL 141 SUBDIVISION			
2/2014	BL 148 L7.04,23.7.01 SUBDIVISION			
4/2013	BL 148 L7.04,23.7.01 SUBDIVISION			
9/2012	BL 148 L7.04,23.7.01 SUBDIVISION			
4/2008	BL 148 L7.04,23.7.01 SUBDIVISION			
4/2008	BL 152 LOT 8 SUBDIVISION			
4/2008	BL 152 LOT 8 SUBDIVISION			
2/2015	BL 141 SUBDIVISION SH. REVISED	REVISED		
2/2015	BL 141 SUBDIVISION SH. REVISED	REVISED		



SHEET 33.01, 34

SHEET 41

SHEET 42

NEW JERSEY DEPARTMENT OF THE TREASURY
 DIVISION OF TAXATION
 PROPERTY ADMINISTRATION
 APPROVED AS A TAX MAP PURSUANT TO THE AUTHORITY OF
 N.J.S.A. 54:15-2.1(a)
 FOR THE DIRECTOR, DIVISION OF TAXATION
James S. ... C.T.A.
 WILLIAM H. BLACK, SUPERVISOR OF LAND RECORDS UTILITIES
 DATE: MAY 4 - 2000 SERIAL NO. 789

TAX MAP
 TOWNSHIP OF NORTH BRUNSWICK
 MIDDLESEX COUNTY, NEW JERSEY
 SCALE: 1" = 100' JUNE 1998
 RAYMOND E. BORUP JR., P.L.S.
 CME ASSOCIATES
 3141 BORDENTOWN AVENUE, PARLIN
 NEW JERSEY, 08859