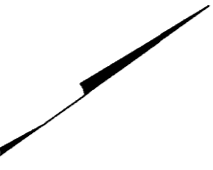
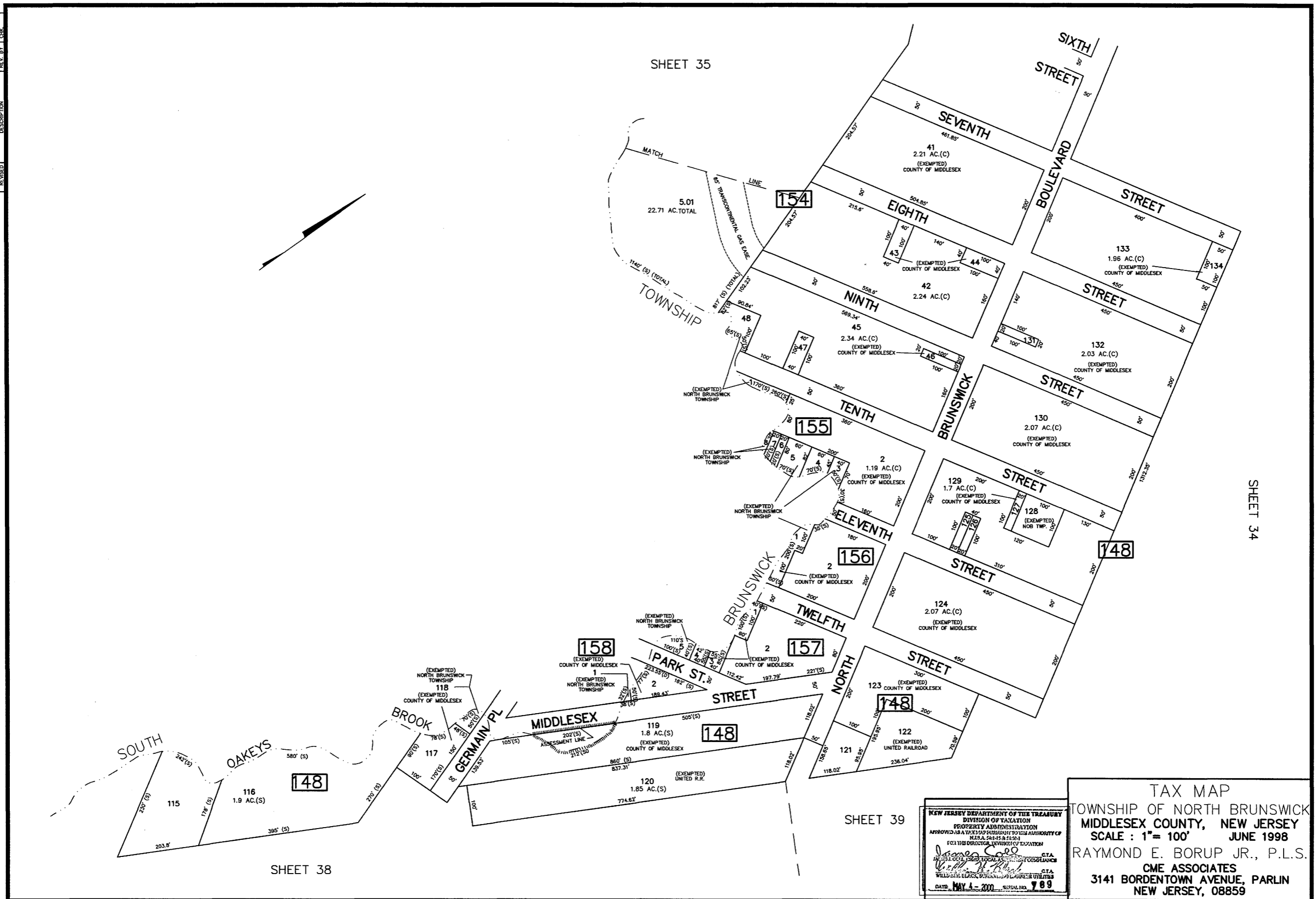


4/2004	BLK 154 LOT 5 SUBDIV	R.R.	REV. BY LCHK
	BLK 148 LOTS 155, 156, 157, 158	R.R.	
	ADDITIONAL LOTS	R.R.	
	MIDDLESEX COUNTY	DESCRIPTION	
	ADDED TO LOTS	REVISED	



SHEET 35

SHEET 34

SHEET 39

SHEET 38

NEW JERSEY DEPARTMENT OF THE TREASURY  
 DIVISION OF TAXATION  
 PROPERTY ADMINISTRATION  
 APPROVED AS A TAX MAP SUBSIDIARY TO THE AUTHORITY OF  
 N.J.S.A. 54:27B-12(a)  
 FOR THE DIRECTOR, DIVISION OF TAXATION  
*James S. [Signature]* C.T.A.  
 WILLIAMS, ELKES, BERENSON & LORNER LLP  
 DATE: MAY 4 - 2001 SERIAL NO. 789

TAX MAP  
 TOWNSHIP OF NORTH BRUNSWICK  
 MIDDLESEX COUNTY, NEW JERSEY  
 SCALE: 1" = 100' JUNE 1998  
 RAYMOND E. BORUP JR., P.L.S.  
 CME ASSOCIATES  
 3141 BORDENTOWN AVENUE, PARLIN  
 NEW JERSEY, 08859