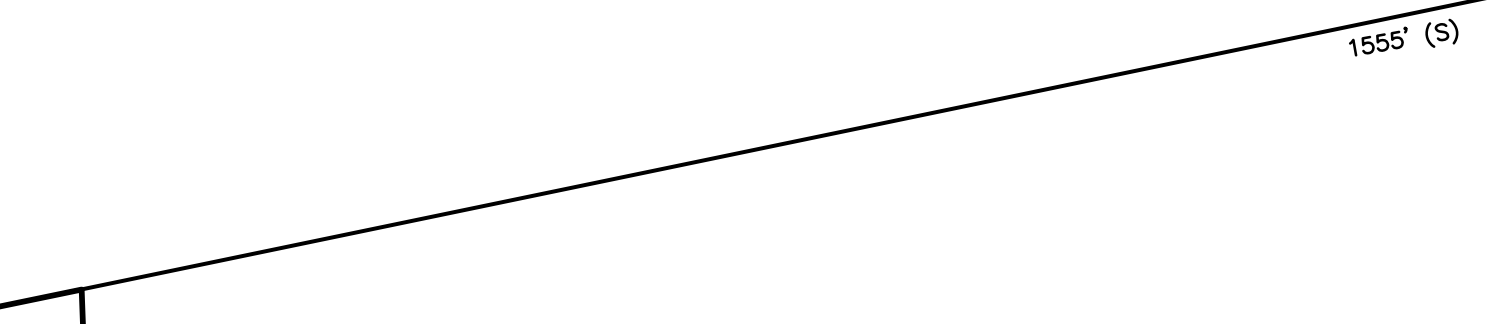


SHEET 33

SHEET 32

7/2019	REVISION	REVISION	REV. BY	CHK.
4/2018	REVISION	REVISION	REV. BY	CHK.
2/2017	REVISION	REVISION	REV. BY	CHK.
1/2017	REVISION	REVISION	REV. BY	CHK.
1/2016	REVISION	REVISION	REV. BY	CHK.
1/2015	REVISION	REVISION	REV. BY	CHK.
1/2014	REVISION	REVISION	REV. BY	CHK.
1/2013	REVISION	REVISION	REV. BY	CHK.

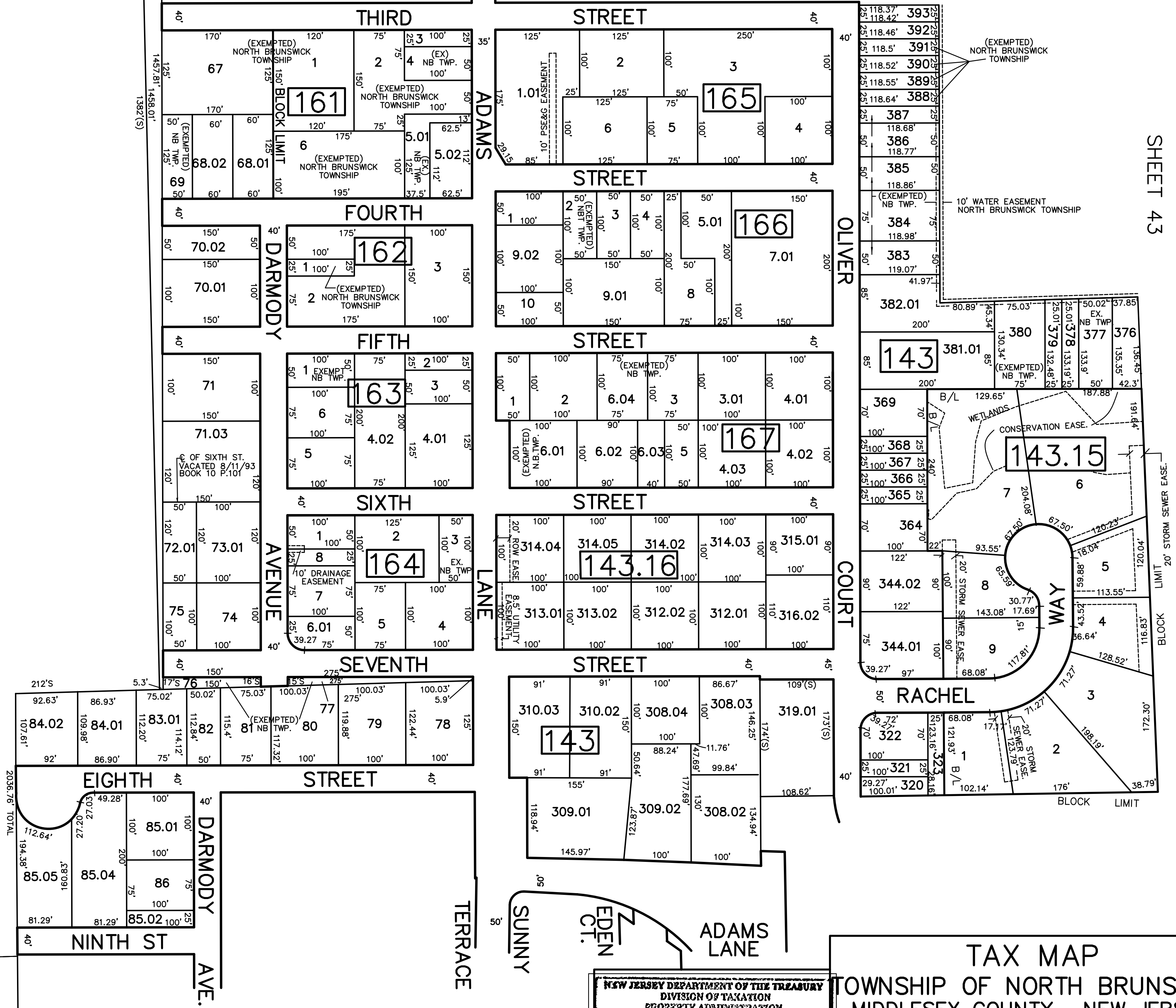


BLOCK LIMIT
2,459.2' TOTAL

148

103
TOTAL
104.788 AC.
(EXEMPTED)
NORTH BRUNSWICK
TOWNSHIP

SHEET 41



SHEET 43

2036.75' TOTAL

MATCH LINE

SHEET 56

SHEET 55

NEW JERSEY DEPARTMENT OF THE TREASURY
DIVISION OF TAXATION
PROPERTY ADMINISTRATION
APPROVED AS A TAX MAP SUBMITTED TO THE AUTHORITY OF
NJ S.A. 24:15 & 24:21
FOR THE DIRECTOR, DIVISION OF TAXATION

James S. Rao C.T.A.
C.T.A.
WILLIAM BLANK, SUPERVISOR OF LOCAL ASSESSMENT
DATE: MAY 4 - 2000 SERIAL NO. 789

TAX MAP
TOWNSHIP OF NORTH BRUNSWICK
MIDDLESEX COUNTY, NEW JERSEY
SCALE : 1" = 100'
JUNE 1998
RAYMOND E. BORUP JR., P.L.S.
CME ASSOCIATES
3141 BORDENTOWN AVENUE, PARLIN
NEW JERSEY, 08859