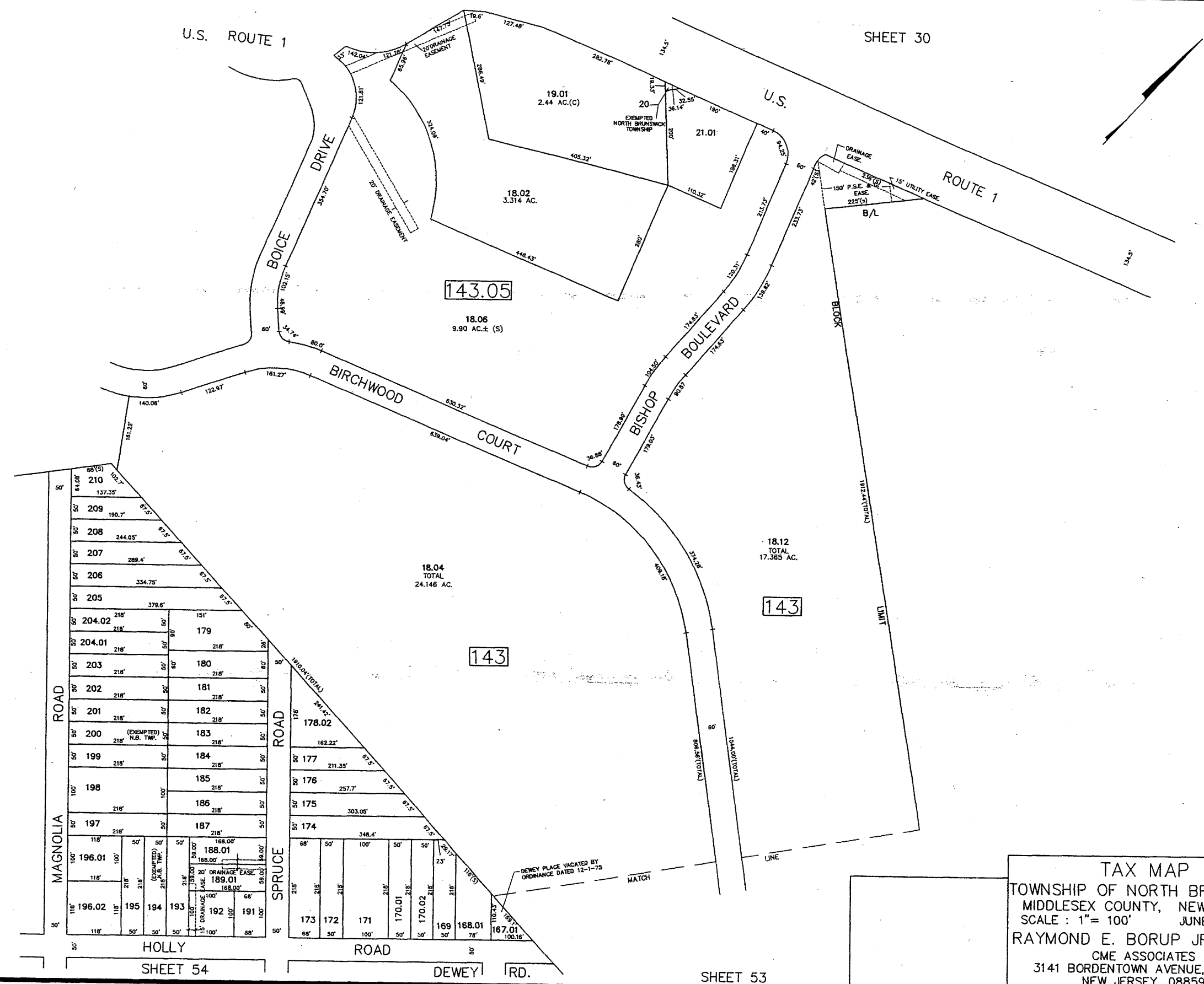


Not to Scale

4/2004	REVISED	DESCRIPTION	REV. BY	CHK.
4/2004	REVISED	BLK. 143 LOT 204 SUBDIVISION	R.R.	

SHEET 43

SHEET 45



TAX MAP  
 TOWNSHIP OF NORTH BRUNSWICK  
 MIDDLESEX COUNTY, NEW JERSEY  
 SCALE: 1" = 100' JUNE 1998  
 RAYMOND E. BORUP JR., P.L.S.  
 CME ASSOCIATES  
 3141 BORDENTOWN AVENUE, PARLIN  
 NEW JERSEY, 08859