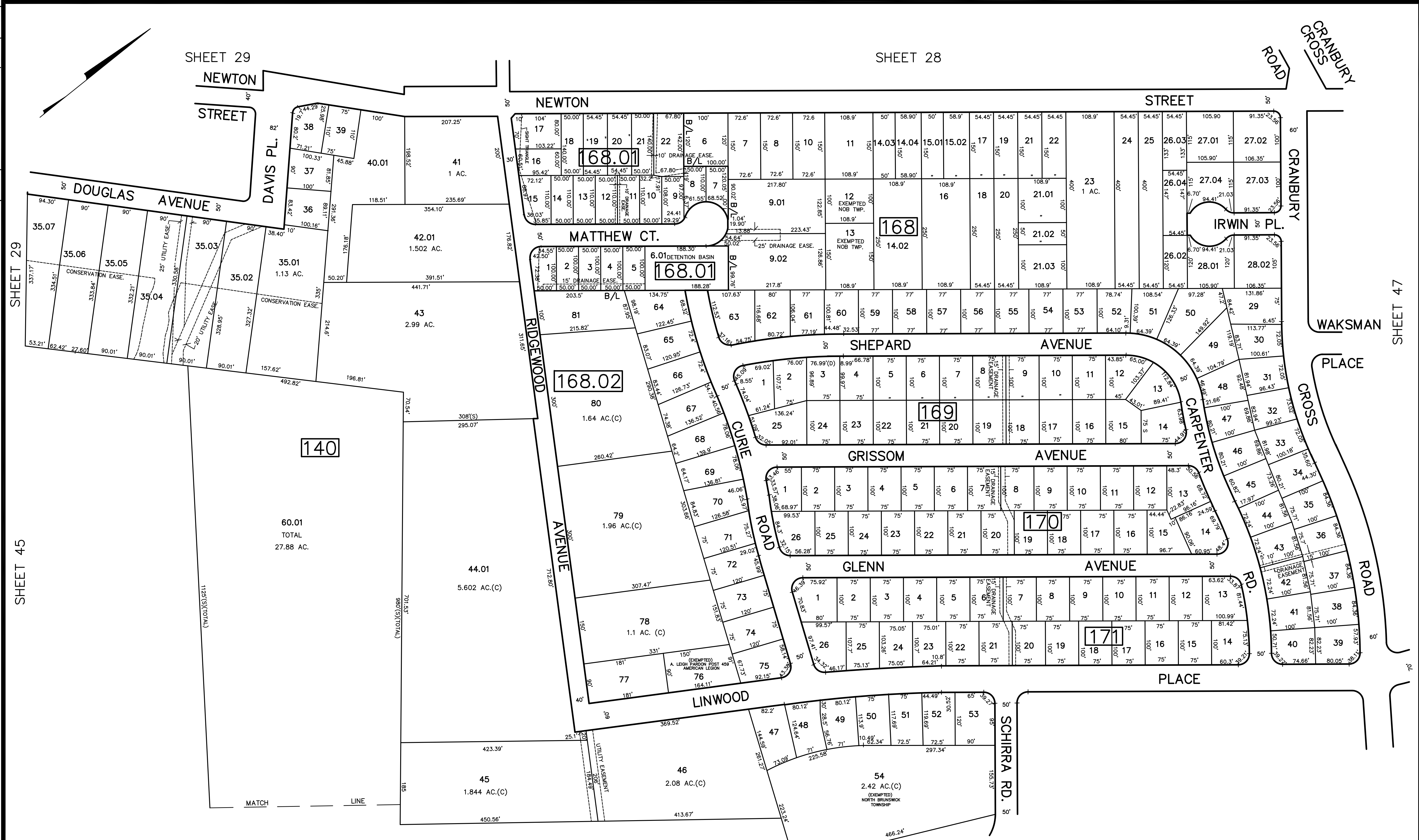


REV.	BY	CHK.	DESCRIPTION
2/2012			BLK 168 L12.13 EXEMPT ADDED
5/2009			BLK 168 L9 BLK 168.01 L6 SUBDIV
3/2006			BLK 168 L10 L20 L21 SUBDIV
2/2006			BLK 148 LOT 35 DOUGLAS EST
4/2004			BLK 168 LOTS 27, 28, 4, 5, 01, 02, 03 SUB. DIVISION
			5/02 B2 SUB. DIVISION
			FARACI SUB.
			REVISED



SHEET 29

SHEET 45

SHEET 29

SHEET 28

SHEET 52

SHEET 51

SHEET 47

NEW JERSEY DEPARTMENT OF THE TREASURY
 DIVISION OF TAXATION
 PROPERTY ADMINISTRATION
 APPROVED AS A TAX MAP PURSUANT TO THE AUTHORITY OF
 N.J.S.A. 54:11-6 & 12-1
 FOR THE DIRECTOR, DIVISION OF TAXATION
James S. [Signature] C.T.A.
 ASSISTANT COUNTY CLERK LOCAL GOVERNMENT COMPLIANCE
[Signature] C.T.A.
 WILLIAM H. BLANK, SUPERVISOR OF ENGINEERING UTILITIES
 DATE: MAY 4 - 2000 SERIAL NO. 789

TAX MAP
 TOWNSHIP OF NORTH BRUNSWICK
 MIDDLESEX COUNTY, NEW JERSEY
 SCALE : 1" = 100' JUNE 1998
 RAYMOND E. BORUP JR., P.L.S.
 CME ASSOCIATES
 3141 BORDENTOWN AVENUE, PARLIN
 NEW JERSEY, 08859