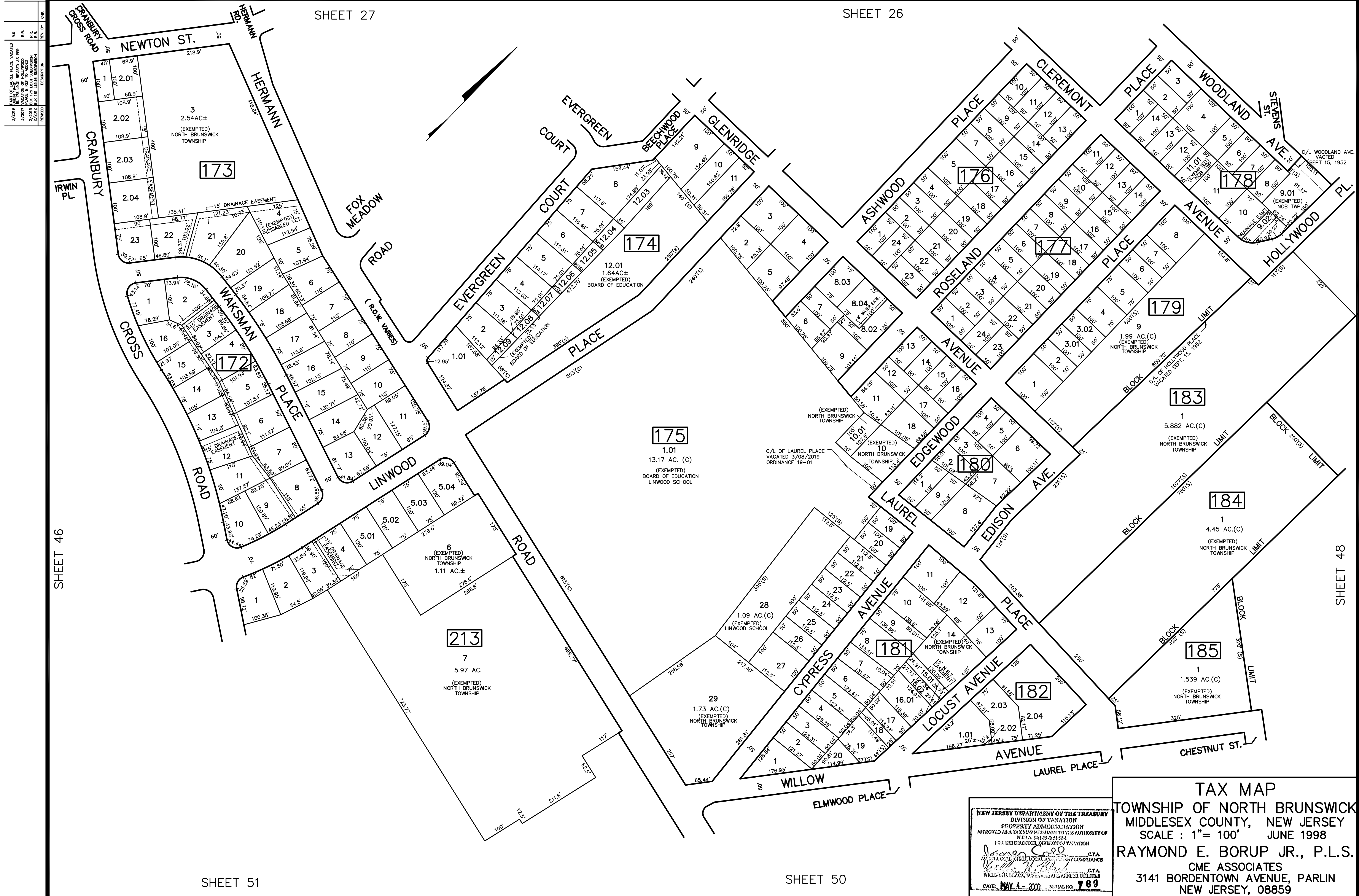


SHEET 27

SHEET 26



3/7/2019	REVISION	REVISION	REVISION
3/7/2017	REVISION	REVISION	REVISION
2/7/2015	REVISION	REVISION	REVISION
2/2/2012	REVISION	REVISION	REVISION
1/1/2010	REVISION	REVISION	REVISION

SHEET 46

SHEET 48

SHEET 51

SHEET 50

NEW JERSEY DEPARTMENT OF THE TREASURY
 DIVISION OF TAXATION
 PROPERTY ADMINISTRATION
 APPROVED AS A TAX MAP PURSUANT TO THE AUTHORITY OF
 N.J.S.A. 54:15-8 (b)(5)
 FOR THE DISTRICT OF TAXATION
James Cole
 COUNTY CLERK
 WILLIAM CLARK, COUNTY ENGINEER
 DATE: MAY 4, 2000 SERIAL NO. 789

TAX MAP
 TOWNSHIP OF NORTH BRUNSWICK
 MIDDLESEX COUNTY, NEW JERSEY
 SCALE : 1" = 100' JUNE 1998
 RAYMOND E. BORUP JR., P.L.S.
 CME ASSOCIATES
 3141 BORDENTOWN AVENUE, PARLIN
 NEW JERSEY, 08859