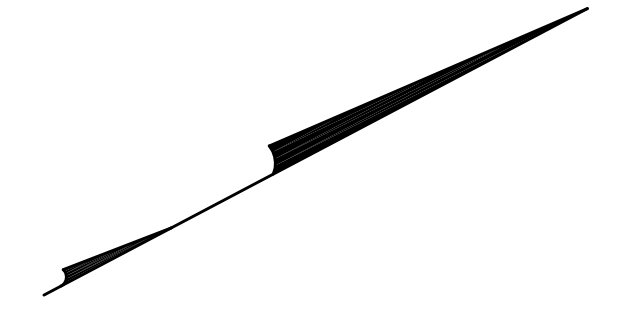
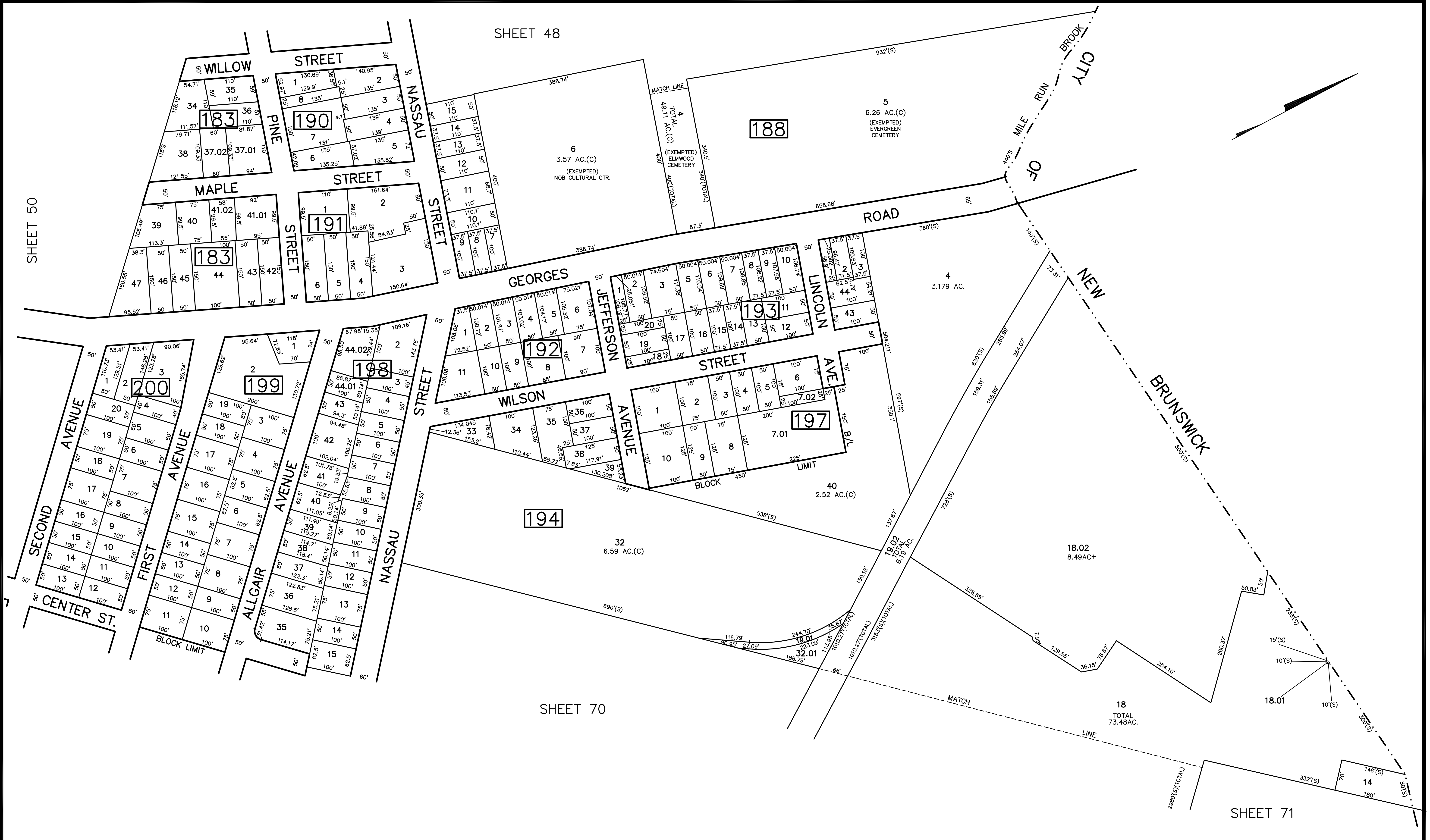


REVISED	DESCRIPTION	REV. BY	CHK.
2/2012	BLK 188 L6 EXEMPTED ADDED		
9/2009	NEW L32.01		
5/2009	BLK 194 L19 det taking		
7/2007	BLK 194 LOT 19.19.01 REF TO		
4/2004	BLK 198 LOTS 1.44 SUBDIVISION		



NEW JERSEY DEPARTMENT OF THE TREASURY
 DIVISION OF TAXATION
 PROPERTY ADMINISTRATION
 APPROVED AS A TAX MAP PURSUANT TO THE AUTHORITY OF
 N.J.S.A. 54:15 & 54:16-1
 FOR THE DIRECTOR, DIVISION OF TAXATION
James S. ... C.T.A.
 WILLIAMS ELMWOOD CEMETERY
 DATE: MAY 4 - 2000 SERIAL NO. 789

TAX MAP
 TOWNSHIP OF NORTH BRUNSWICK
 MIDDLESEX COUNTY, NEW JERSEY
 SCALE : 1"= 100' JUNE 1998
 RAYMOND E. BORUP JR., P.L.S.
 CME ASSOCIATES
 3141 BORDENTOWN AVENUE, PARLIN
 NEW JERSEY, 08859