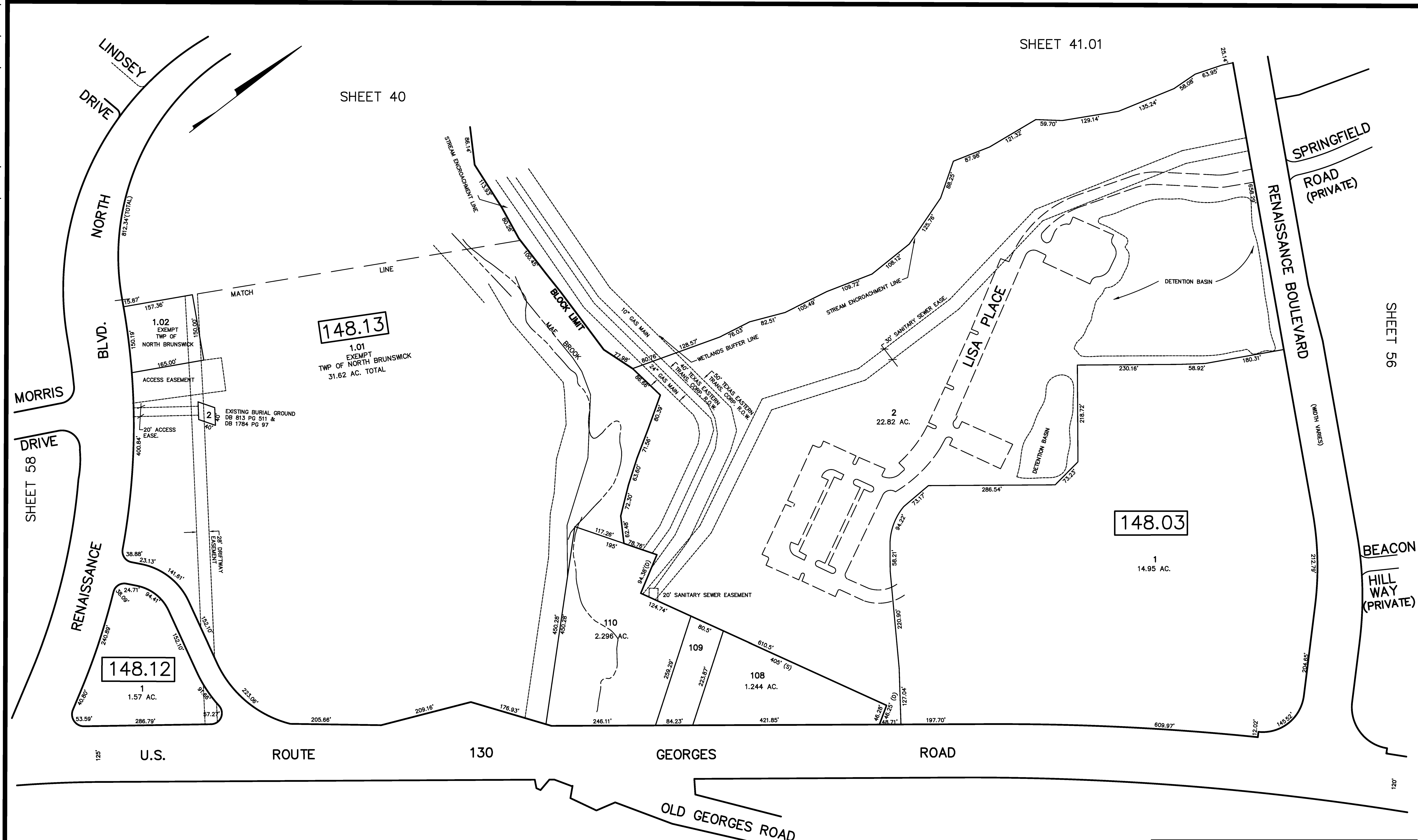


REVISED	DESCRIPTION	REV. BY	CHK.
5/2015	BL 148.13 L1.02 REVISED	RR	
6/2012	ADJUST RENAISSANCE SUBDIVISIONS	A.C.	
7/2008	RENAISSANCE SUBDIVISION	R.R.	
6/2004	RENAISSANCE SEC 2 & 3	R.R.	
	ADDED		



SHEET 41.01

SHEET 40

SHEET 56

BEACON HILL WAY (PRIVATE)

SHEET 61

SHEET 62

NEW JERSEY DEPARTMENT OF THE TREASURY
 DIVISION OF TAXATION
 PROPERTY ADDRESS VERIFICATION
 APPROVED AS A TAX MAP PURSUANT TO THE AUTHORITY OF
 N.J.S.A. 17B:15-3.1 (2004)
 FOR THE DIRECTOR, DIVISION OF TAXATION
James C. ... C.T.A.
William ... C.T.A.
 DATE: MAY 4 - 2000 SERIAL NO. 989

TAX MAP
 TOWNSHIP OF NORTH BRUNSWICK
 MIDDLESEX COUNTY, NEW JERSEY
 SCALE : 1" = 100' JUNE 1998
 RAYMOND E. BORUP JR., P.L.S.
 CME ASSOCIATES
 3141 BORDENTOWN AVENUE, PARLIN
 NEW JERSEY, 08859