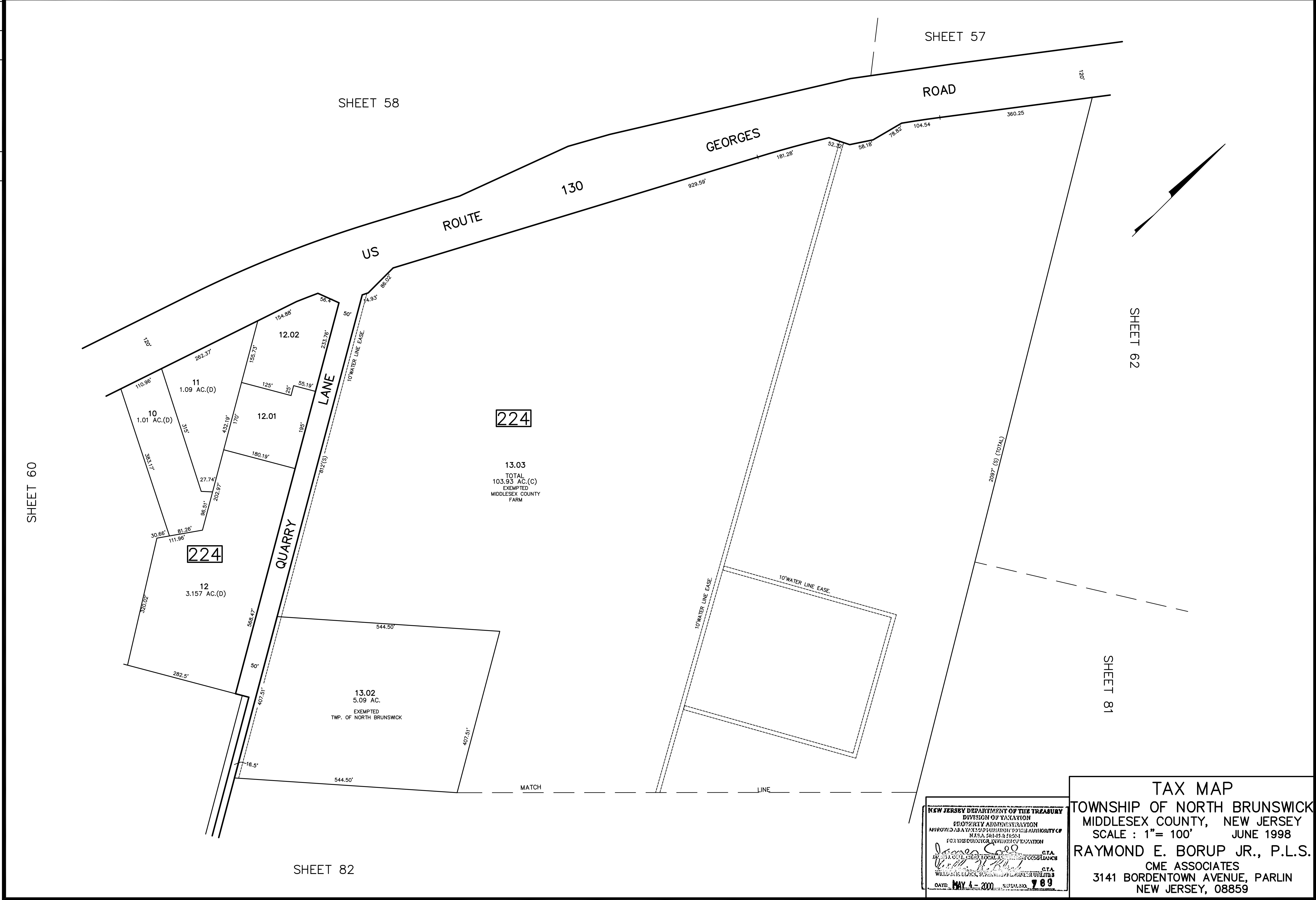


2/2012	REVISED	DESCRIPTION	REV. BY	CHK.
4/2004	REVISED	BLK 224 L13.02.13.03 WATER LINE EASE ADDED		
		BLK 224 LOT 13 SUBDIVISION		



NEW JERSEY DEPARTMENT OF THE TREASURY  
 DIVISION OF TAXATION  
 PROPERTY ADDRESS TAXATION  
 APPROVED AS A TAX MAP SUBMISSION TO THE AUTHORITY OF  
 N.J.S.A. 54:15 & 15-1  
 FOR THE DIRECTOR, DIVISION OF TAXATION  
*James S. Rao* C.T.A.  
 WILLIAM B. LARK, SUPERVISOR OF LOCAL AGENCIES  
 DATE: MAY 4 - 2000 SERIAL NO. 789

TAX MAP  
 TOWNSHIP OF NORTH BRUNSWICK  
 MIDDLESEX COUNTY, NEW JERSEY  
 SCALE : 1" = 100' JUNE 1998  
 RAYMOND E. BORUP JR., P.L.S.  
 CME ASSOCIATES  
 3141 BORDENTOWN AVENUE, PARLIN  
 NEW JERSEY, 08859