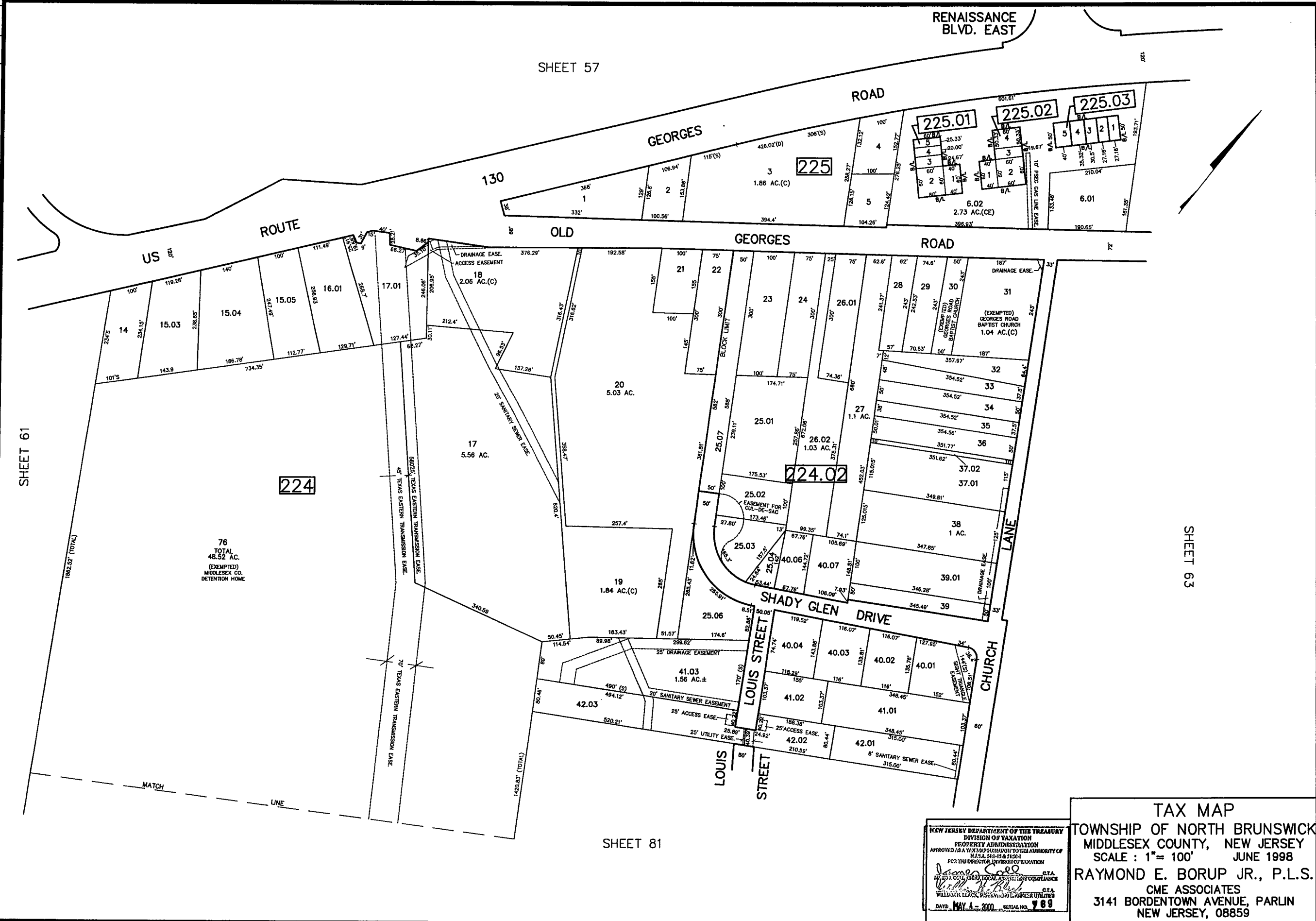


REVISED	DESCRIPTION	REV. BY	CHK.
2/2012	BLK 224 1/8" DRAIN EASE. ADDED	R.R.	
3/2008	BLK 224 1/8" DRAIN EASE. ADDED	R.R.	
3/2008	BLK 224 1/8" DRAIN EASE. ADDED	R.R.	
3/2008	BLK 224 1/8" DRAIN EASE. ADDED	R.R.	
4/2004	BLK 224 1/8" DRAIN EASE. ADDED	R.R.	



SHEET 61

SHEET 57

SHEET 63

SHEET 81

76  
TOTAL  
48.52 AC.  
(EXEMPTED)  
MIDDLESEX CO.  
DETENTION HOME

NEW JERSEY DEPARTMENT OF THE TREASURY  
DIVISION OF TAXATION  
PROPERTY ADMINISTRATION  
APPROVED AS A TAX MAP PURSUANT TO THE AUTHORITY OF  
N.J.S.A. 54:15 & 54:20  
BY THE DIRECTOR, DIVISION OF TAXATION  
*James S. ...*  
DATE: MAY 4 - 2000 SERIAL NO. 789

TAX MAP  
TOWNSHIP OF NORTH BRUNSWICK  
MIDDLESEX COUNTY, NEW JERSEY  
SCALE: 1" = 100' JUNE 1998  
RAYMOND E. BORUP JR., P.L.S.  
CME ASSOCIATES  
3141 BORDENTOWN AVENUE, PARLIN  
NEW JERSEY, 08859