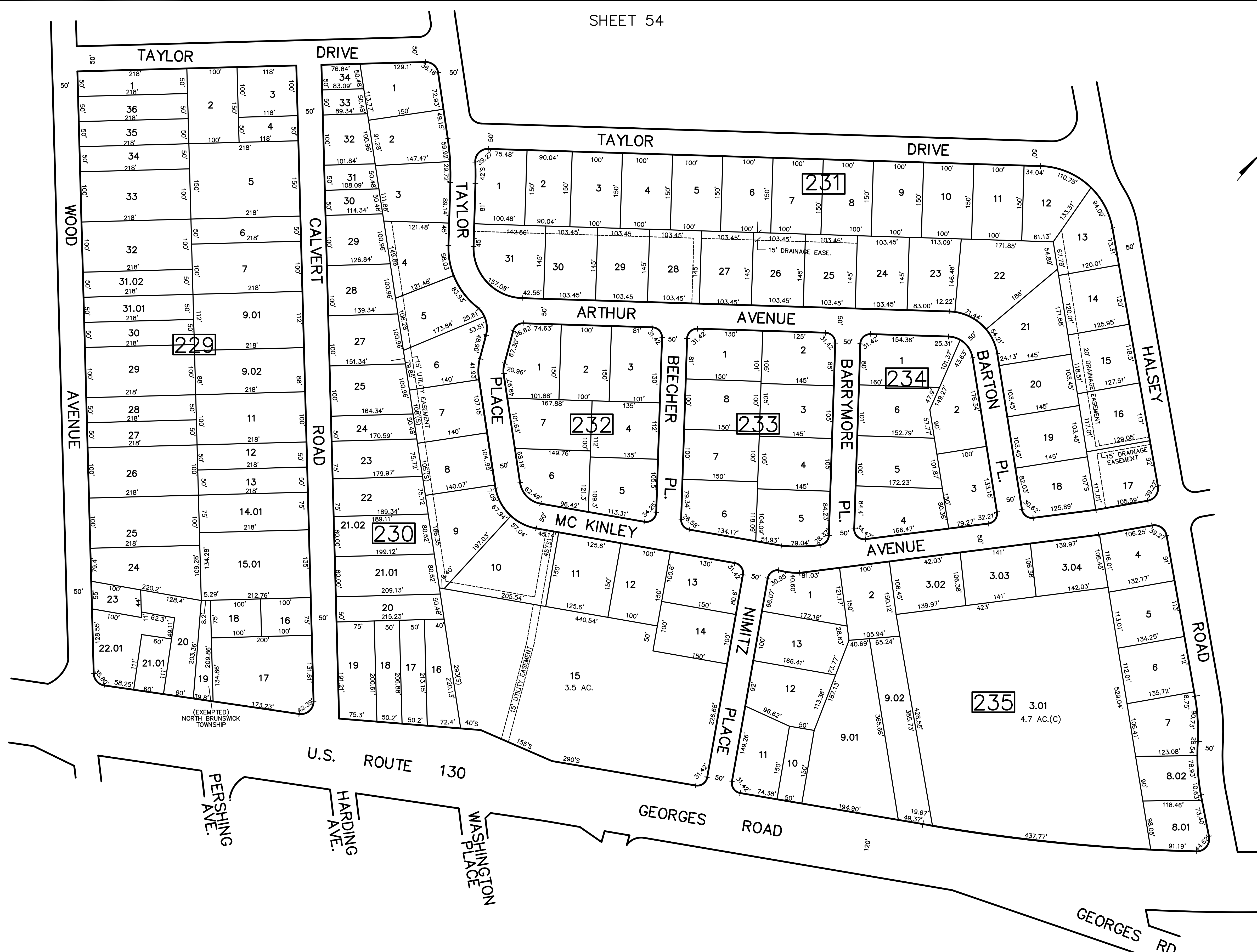


REVISED	DESCRIPTION	REV. BY	CHK.
2/2017	BLK 229 LOTS 1-11 SUBDIV	R.R.	
2/2015	BLK 230 LOTS 1-21 SUBDIV	R.R.	
4/2008	BLK 229 LOTS 14,15 SUBDIV	R.R.	
2/2008	BLK 229 LOTS 5,10 SUBDIV	R.R.	

SHEET 55

SHEET 64



SHEET 54

SHEET 66

SHEET 78

SHEET 77

NEW JERSEY DEPARTMENT OF THE TREASURY
 DIVISION OF TAXATION
 PROPERTY ADMINISTRATION
 APPROVED AS A FINAL MAP PURSUANT TO THE AUTHORITY OF
 N.J.S.A. 54:15 & 54:20-1
 FOR THE DIRECTOR, DIVISION OF TAXATION
James C. ... C.T.A.
William J. ... C.T.A.
 DATE: MAY 4 - 2000 SERIAL NO. 789

TAX MAP
 TOWNSHIP OF NORTH BRUNSWICK
 MIDDLESEX COUNTY, NEW JERSEY
 SCALE : 1" = 100' JUNE 1998
 RAYMOND E. BORUP JR., P.L.S.
 CME ASSOCIATES
 3141 BORDENTOWN AVENUE, PARLIN
 NEW JERSEY, 08859