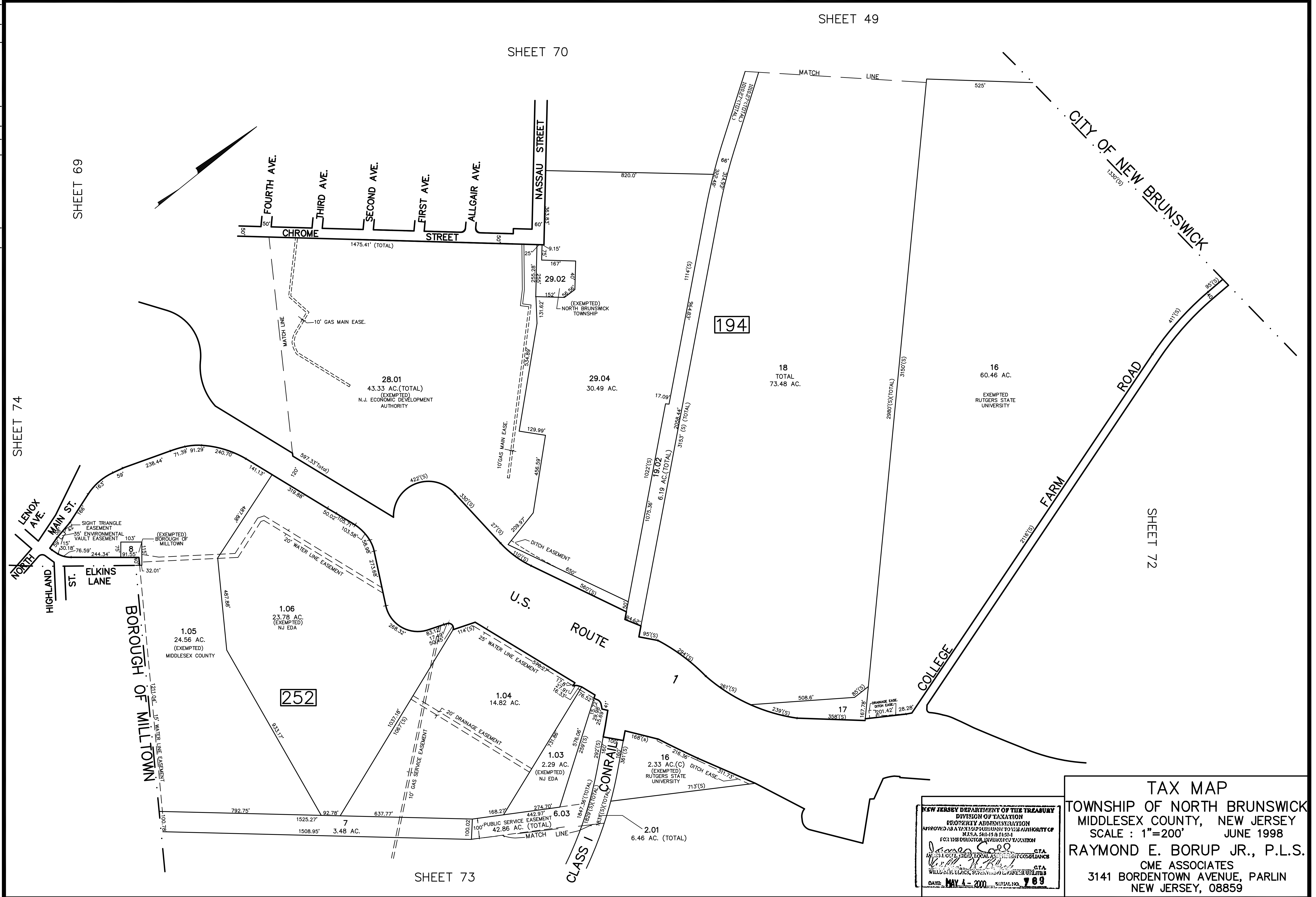


REVISED	DESCRIPTION	REV. BY	CHK.
1/2018	NEW LOTS CONSOLIDATED		
2/2018	NEW LOTS CONSOLIDATED		
3/2018	NEW LOTS CONSOLIDATED		
4/2018	NEW LOTS CONSOLIDATED		
5/2018	NEW LOTS CONSOLIDATED		
6/2018	NEW LOTS CONSOLIDATED		
7/2018	NEW LOTS CONSOLIDATED		
8/2018	NEW LOTS CONSOLIDATED		
9/2018	NEW LOTS CONSOLIDATED		
10/2018	NEW LOTS CONSOLIDATED		
11/2018	NEW LOTS CONSOLIDATED		
12/2018	NEW LOTS CONSOLIDATED		
1/2019	NEW LOTS CONSOLIDATED		
2/2019	NEW LOTS CONSOLIDATED		
3/2019	NEW LOTS CONSOLIDATED		
4/2019	NEW LOTS CONSOLIDATED		
5/2019	NEW LOTS CONSOLIDATED		
6/2019	NEW LOTS CONSOLIDATED		
7/2019	NEW LOTS CONSOLIDATED		
8/2019	NEW LOTS CONSOLIDATED		
9/2019	NEW LOTS CONSOLIDATED		
10/2019	NEW LOTS CONSOLIDATED		
11/2019	NEW LOTS CONSOLIDATED		
12/2019	NEW LOTS CONSOLIDATED		
1/2020	NEW LOTS CONSOLIDATED		
2/2020	NEW LOTS CONSOLIDATED		
3/2020	NEW LOTS CONSOLIDATED		
4/2020	NEW LOTS CONSOLIDATED		
5/2020	NEW LOTS CONSOLIDATED		
6/2020	NEW LOTS CONSOLIDATED		
7/2020	NEW LOTS CONSOLIDATED		
8/2020	NEW LOTS CONSOLIDATED		
9/2020	NEW LOTS CONSOLIDATED		
10/2020	NEW LOTS CONSOLIDATED		
11/2020	NEW LOTS CONSOLIDATED		
12/2020	NEW LOTS CONSOLIDATED		



NEW JERSEY DEPARTMENT OF THE TREASURY
 DIVISION OF TAXATION
 PROPERTY ADMINISTRATION
 APPROVED AS A TAX MAP PURSUANT TO THE AUTHORITY OF
 N.J.S.A. 54:15 & 54:20-1
 FOR THE DIRECTOR, DIVISION OF TAXATION
James Sale
 JAMES SALE, C.T.A.
 WILLIAM H. ELKAY, SUPERVISOR OF POWER UTILITIES
 DATE: MAY 4 - 2000 SERIAL NO. 789

TAX MAP
 TOWNSHIP OF NORTH BRUNSWICK
 MIDDLESEX COUNTY, NEW JERSEY
 SCALE : 1"=200' JUNE 1998
 RAYMOND E. BORUP JR., P.L.S.
 CME ASSOCIATES
 3141 BORDENTOWN AVENUE, PARLIN
 NEW JERSEY, 08859