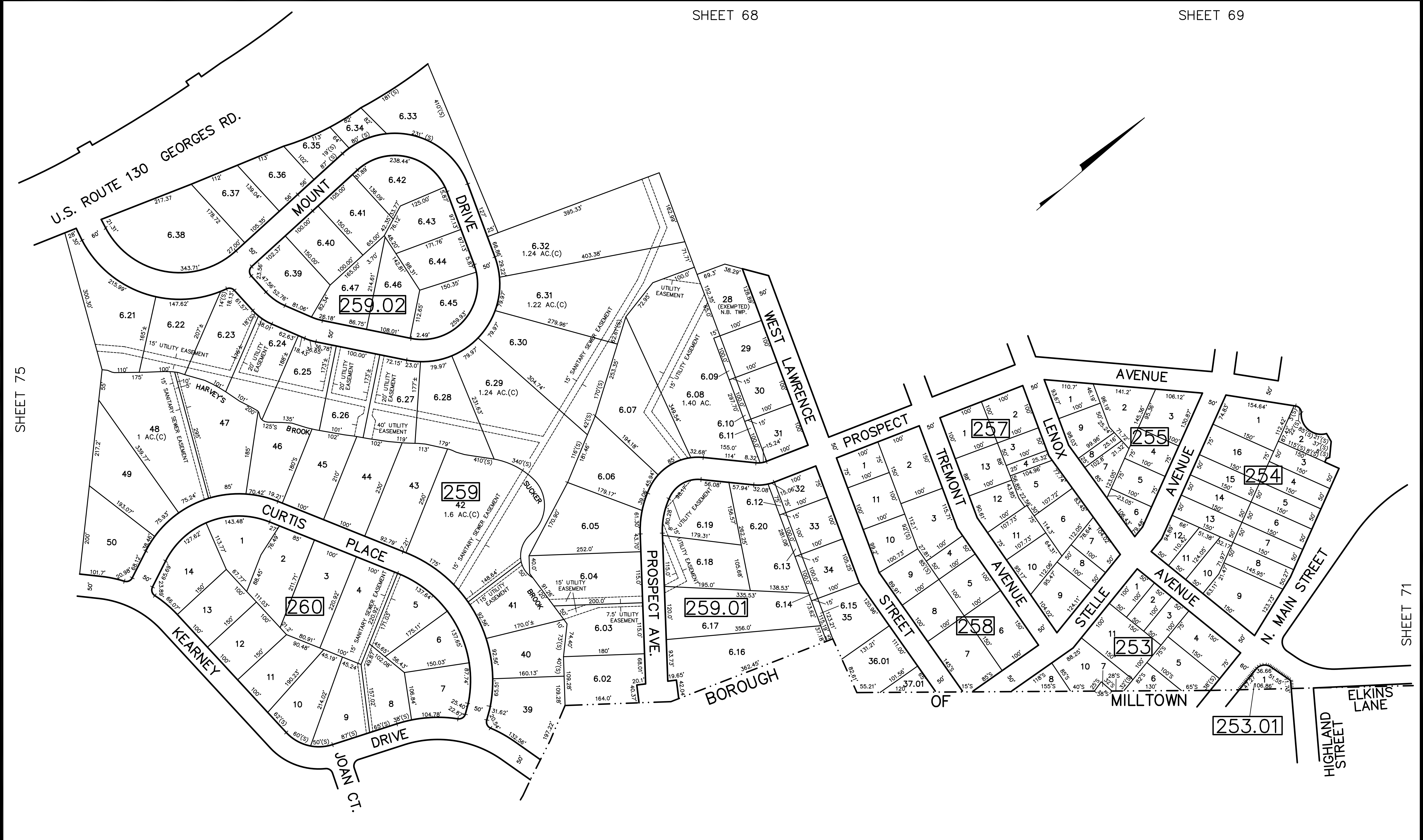


REVISED	DESCRIPTION	REV. BY	CHK.
2/2019	BL 260 L 1,2 REVISED		
5/2010	BL 259 L6-41 CHG L6.21		
3/2006	BL 259 L6-41 CHG TO MOUNT RD.		
3/2006	BLK 259 LOTS 36, 37 SUBDIV		
6/2004	BLK 259 LOTS 6.33 - 6.38		
	DOT TANKING		



SHEET 75

SHEET 71

SHEET 75

NEW JERSEY DEPARTMENT OF THE TREASURY  
 DIVISION OF TAXATION  
 APPROVED AS A TAX MAP SUBMITTED TO THE AUTHORITY OF  
 FOR THE DIRECTOR, DIVISION OF TAXATION  
 DATE: MAY 4, 2000 SERIAL NO. 789

TAX MAP  
 TOWNSHIP OF NORTH BRUNSWICK  
 MIDDLESEX COUNTY, NEW JERSEY  
 SCALE : 1" = 100' JUNE 1998  
 RAYMOND E. BORUP JR., P.L.S.  
 CME ASSOCIATES  
 3141 BORDENTOWN AVENUE, PARLIN  
 NEW JERSEY, 08859