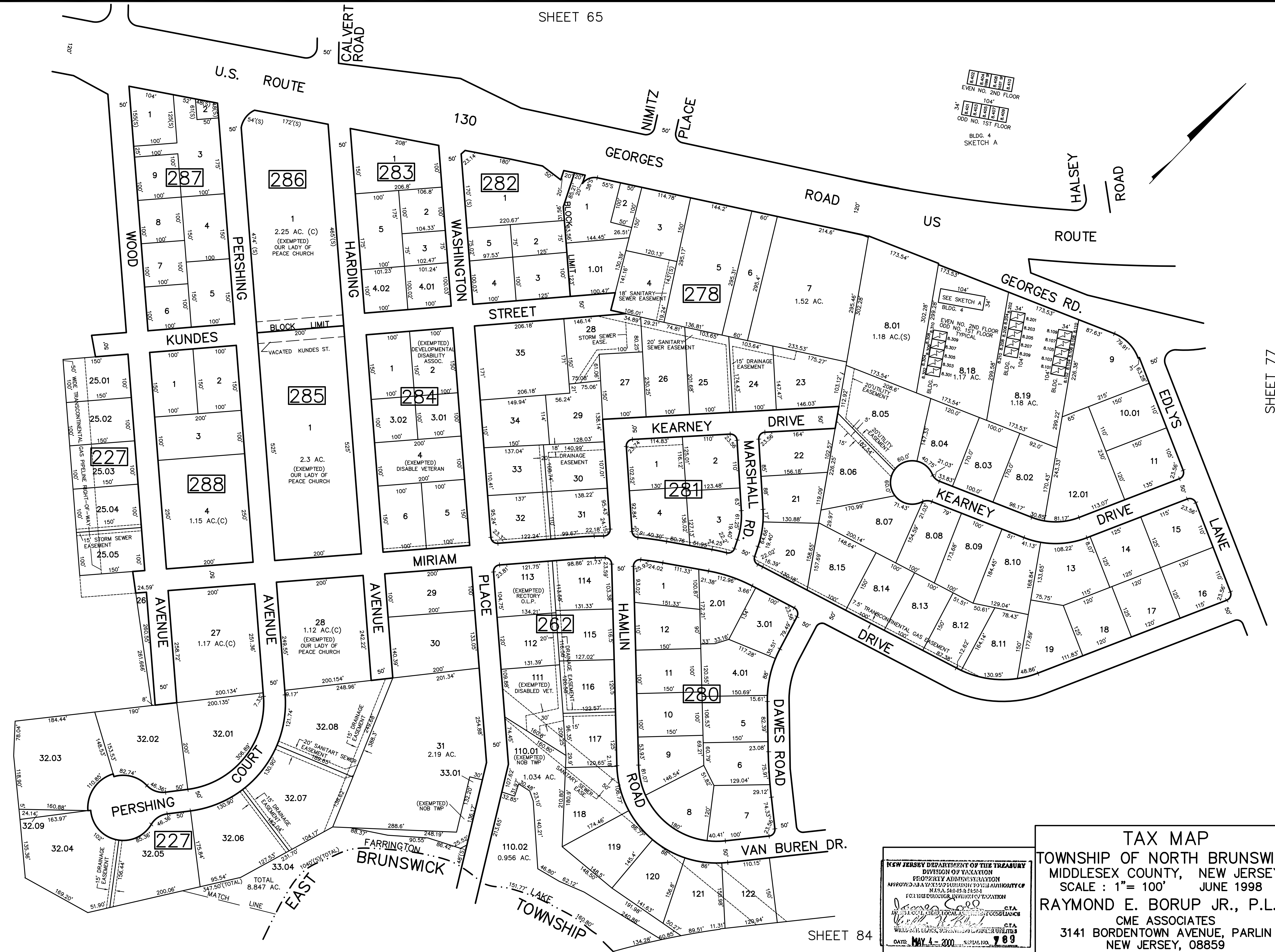


REVISED	DESCRIPTION	REV. BY	CHK.
1/2019	BLK 262 L 110.01 111.17-123 50' SANITARY SEWER EASE. ADDED	R.R.	CHK.
6/04	BLK 278 L8,18 CONDO 8.404, 8.406, 8.408 CONSOLID. NEW CONDO 8.404, 8.408 3/2012 BLK 278 L28 STORM EASE ADDED 2/2012 BLK 286 L1 PARCEL 33 TAKING BLK 278 L8 LOIS 8.17, 8.16 SUBDIV. LAKE FARRINGTON PLAZA	R.R.	CHK.

REVISED	DESCRIPTION	REV. BY	CHK.
6/04	BLK 278 L8,18 CONDO 8.404, 8.406, 8.408 CONSOLID. NEW CONDO 8.404, 8.408 3/2012 BLK 278 L28 STORM EASE ADDED 2/2012 BLK 286 L1 PARCEL 33 TAKING BLK 278 L8 LOIS 8.17, 8.16 SUBDIV. LAKE FARRINGTON PLAZA	R.R.	CHK.



NEW JERSEY DEPARTMENT OF THE TREASURY
 DIVISION OF TAXATION
 PROPERTY ADMINISTRATION
 APPROVED AS A TAX MAP PURSUANT TO THE AUTHORITY OF
 N.J.S.A. 17:27 & 17:28
 FOR THE DIRECTOR, DIVISION OF TAXATION
James S. ... C.T.A.
... C.T.A.
 DATE: MAY 4 - 2000 SERIAL NO. 789

TAX MAP
 TOWNSHIP OF NORTH BRUNSWICK
 MIDDLESEX COUNTY, NEW JERSEY
 SCALE : 1" = 100' JUNE 1998
 RAYMOND E. BORUP JR., P.L.S.
 CME ASSOCIATES
 3141 BORDENTOWN AVENUE, PARLIN
 NEW JERSEY, 08859