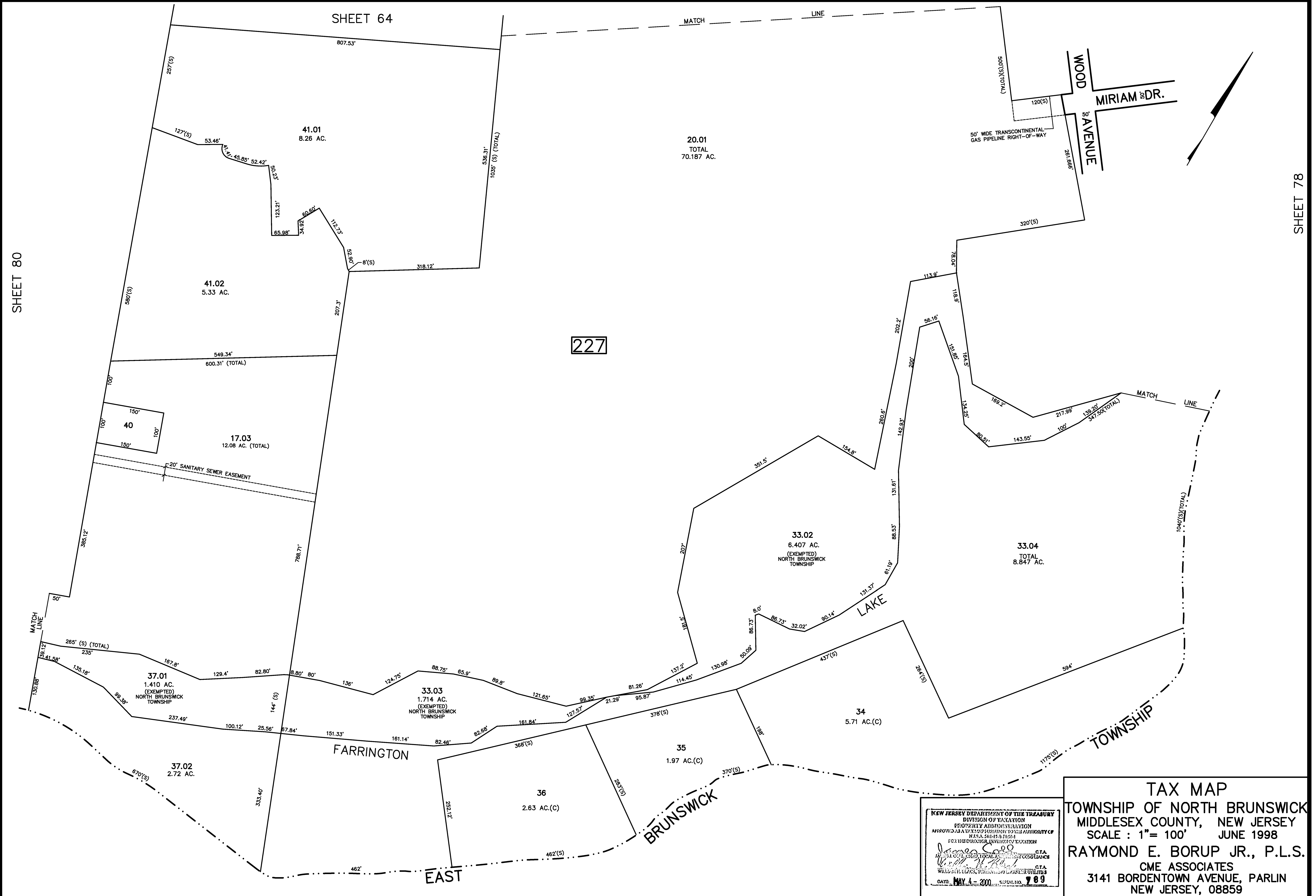


1/2018	BLK. 227 L17.03 AC. CHG	R.R.	REV. BY	CHK.
6/2004	BLK. 227 SUBDIVISION GOLDEN VALLEY EST.	R.R.		
		DESCRIPTION		
		REVISED		



SHEET 78

NEW JERSEY DEPARTMENT OF THE TREASURY
 DIVISION OF TAXATION
 PROPERTY ADJUSTMENT
 APPROVED AS A WORK OF SUPERVISORY AUTHORITY OF
 N.J.S.A. 54:15-2.1(a)
 FOR THE DIRECTOR, DIVISION OF TAXATION
James S. ... C.T.A.
... C.T.A.
 DATE: MAY 4 - 2000 SERIAL NO. 789

TAX MAP
 TOWNSHIP OF NORTH BRUNSWICK
 MIDDLESEX COUNTY, NEW JERSEY
 SCALE : 1" = 100' JUNE 1998
 RAYMOND E. BORUP JR., P.L.S.
 CME ASSOCIATES
 3141 BORDENTOWN AVENUE, PARLIN
 NEW JERSEY, 08859