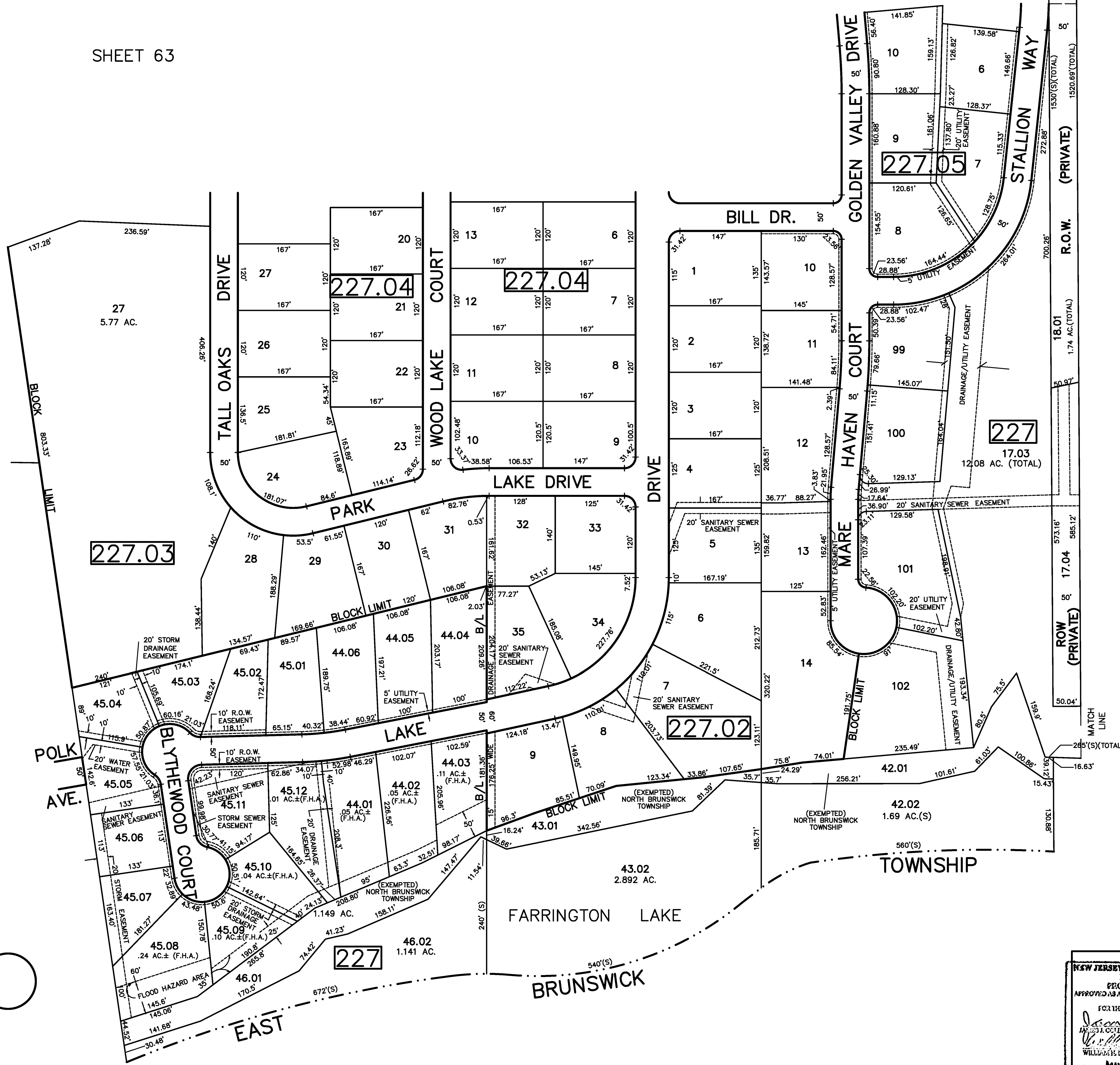


REV.	DATE	DESCRIPTION
1/2016	REV. 227 LITTLE CHS. CHS.	
3/2011	REV. 227 LITTLE CHS. W/ DEEDS	
6/2004	REV. 227 SUBDIVISION TOUCHER	
REVISED		

SHEET 63

SHEET 64

SHEET 79



SHEET 81

DEAR CROSS LANE

SHEET 83

NEW JERSEY DEPARTMENT OF THE TREASURY  
 DIVISION OF TAXATION  
 PROPERTY ADMINISTRATION  
 APPROVED AS A TAX MAP PURSUANT TO THE AUTHORITY OF  
 N.J.S.A. 54:15 & 54:20-1  
 FOR THE DIRECTOR, DIVISION OF TAXATION  
*James Cole* C.T.A.  
 WILLIAM'S BLACK, SUPERVISOR OF MAPPING UTILITIES C.T.A.  
 DATE: MAY 4 - 2000 SERIAL NO. 789

TAX MAP  
 TOWNSHIP OF NORTH BRUNSWICK  
 MIDDLESEX COUNTY, NEW JERSEY  
 SCALE : 1" = 100' JUNE 1998  
 RAYMOND E. BORUP JR., P.L.S.  
 CME ASSOCIATES  
 3141 BORDENTOWN AVENUE, PARLIN  
 NEW JERSEY, 08859