

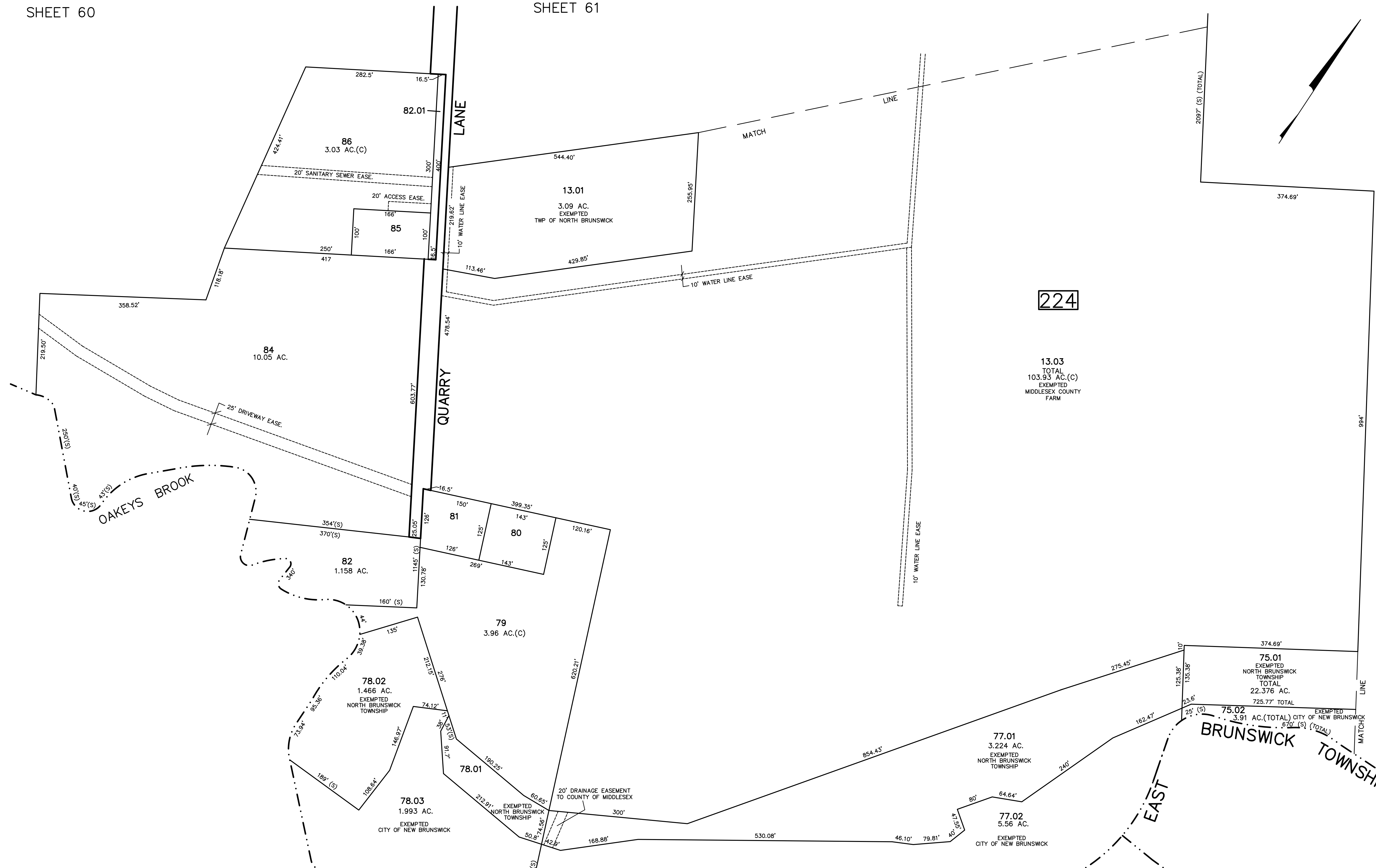
SHEET 60

SHEET 61

SHEET 81

SHEET 83

REVISED	DESCRIPTION	REV. BY	CHK.
1/2019	BLK 224 L84 QUARRY LA. REVISED	R.R.	
2/2018	BLK 224 L86 EASE ADDED	R.R.	
2/2016	ADJUSTED FOR ROW FRONT OF LOT 84	R.R.	
2/2012	BLK 224 L13.01, 13.03 WATER EASE ADDED	R.R.	
4/2004	BLK 224 LOT 84 EASE ADDED	R.R.	



TAX MAP
 TOWNSHIP OF NORTH BRUNSWICK
 MIDDLESEX COUNTY, NEW JERSEY
 SCALE : 1" = 100' JUNE 1998
 RAYMOND E. BORUP JR., P.L.S.
 CME ASSOCIATES
 3141 BORDENTOWN AVENUE, PARLIN
 NEW JERSEY, 08859

NEW JERSEY DEPARTMENT OF THE TREASURY
 DIVISION OF TAXATION
 PROPERTY ADJUSTMENT
 APPROVED AS A TAX MAP PURSUANT TO THE AUTHORITY OF
 N.J.S.A. 54:15 & 54:21
 FOR THE DIRECTOR, DIVISION OF TAXATION
James C. ... C.T.A.
... C.T.A.
 DATE: MAY 4 - 2000 SERIAL NO. 789