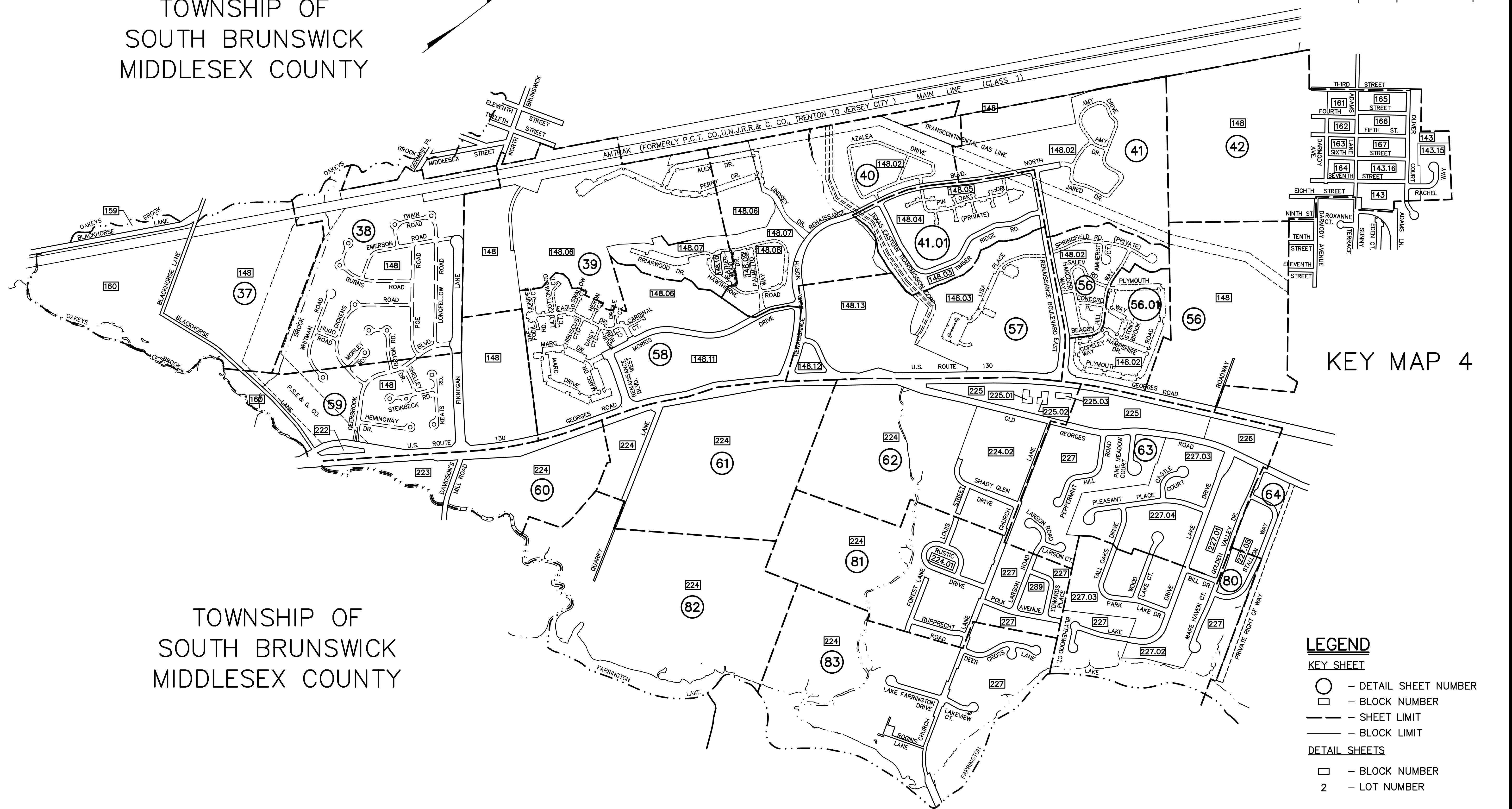


KEY MAP 1

TOWNSHIP OF SOUTH BRUNSWICK
MIDDLESEX COUNTY

REVISION			
DATE	NAME		L.S. NO.
6/2004	MICHAEL MC GURL	P.L.S.	38338
3/2006	MICHAEL MC GURL	P.L.S.	38338
4/2007	MICHAEL MC GURL	P.L.S.	38338
2/2012	MICHAEL MC GURL	P.L.S.	38338
4/2013	MICHAEL MC GURL	P.L.S.	38338
2/2014	MICHAEL MC GURL	P.L.S.	38338
2/2020	MICHAEL MC GURL	P.L.S.	38338



TOWNSHIP OF SOUTH BRUNSWICK
MIDDLESEX COUNTY

TOWNSHIP OF EAST BRUNSWICK
MIDDLESEX COUNTY

KEY MAP 4

LEGEND

- KEY SHEET**
- - DETAIL SHEET NUMBER
 - - BLOCK NUMBER
 - - SHEET LIMIT
 - - BLOCK LIMIT
- DETAIL SHEETS**
- - BLOCK NUMBER
 - 2 - LOT NUMBER

NEW JERSEY DEPARTMENT OF THE TREASURY
DIVISION OF TAXATION
PROPERTY ADVERTISEMENT
APPROVED AS A TAX MAP PURSUANT TO THE AUTHORITY OF
N.J.S.A. 54:15-8.1 & 12-04
FOR THE DIRECTOR, DIVISION OF TAXATION

James S. ... C.T.A.
WILLIAM BLACK, SUPERVISOR OF ENGINEERING UTILITIES
DATE: MAY 4 - 2000 SERIAL NO. 789

TAX MAP
TOWNSHIP OF NORTH BRUNSWICK
MIDDLESEX COUNTY, NEW JERSEY
SCALE: 1" = 500' JUNE 1998
RAYMOND E. BORUP JR., P.L.S.
CME ASSOCIATES
3141 BORDENTOWN AVENUE, PARLIN
NEW JERSEY, 08859