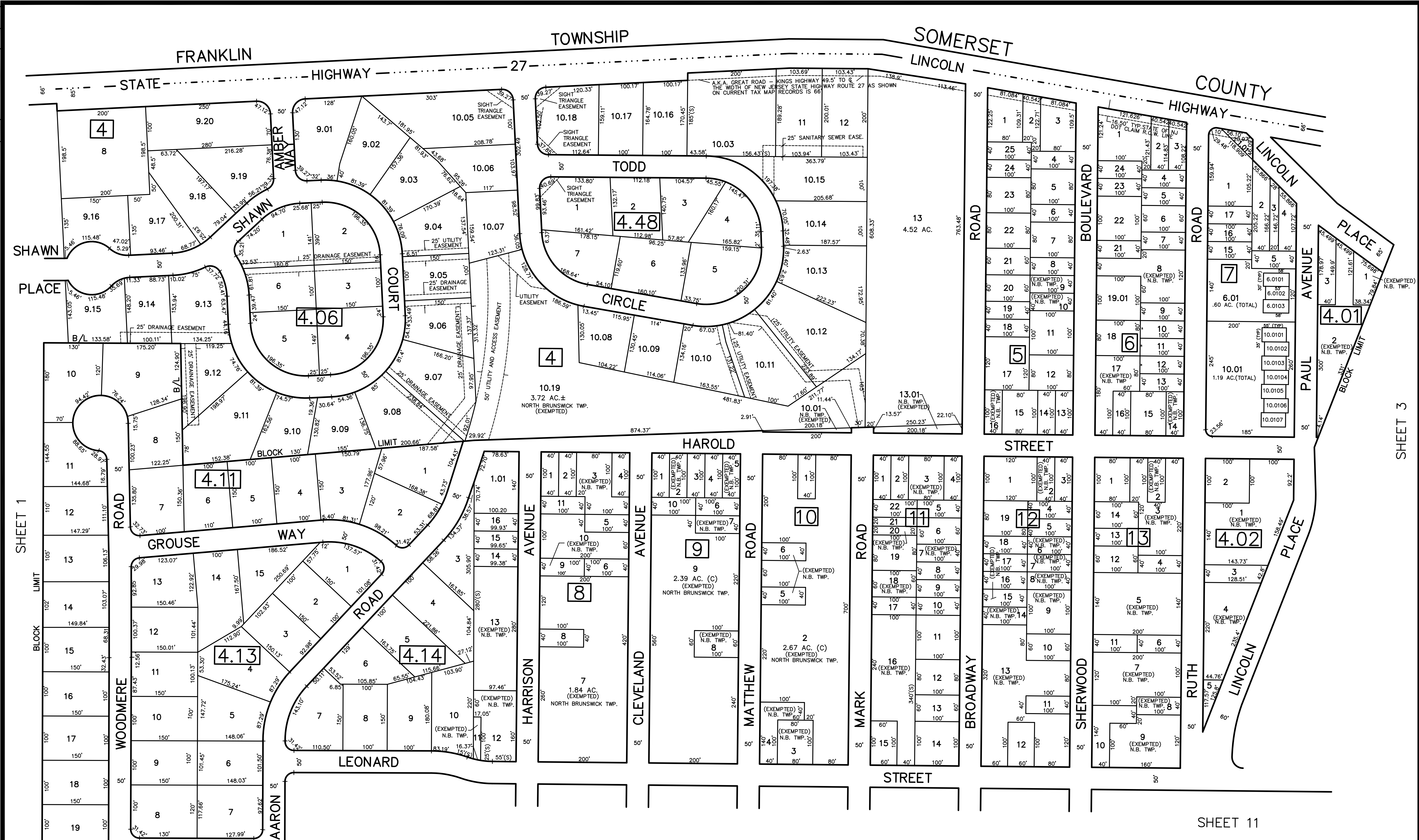


2/2002 BY 04714 SUBDIVISION MAP 7 (FORM 1-13-00) SHOWING THE LOTS AND BLOCKS OF THE SHAWN PLACE AND TODD CIRCLE AREAS IN THE TOWNSHIP OF NORTH BRUNSWICK, MIDDLESEX COUNTY, NEW JERSEY. THESE LOTS AND BLOCKS WERE RECORDED ON MAY 4, 2000.



SHEET 12

SHEET 11

NEW JERSEY DEPARTMENT OF THE TREASURY  
DIVISION OF TAXATION  
PROPERTY ADMINISTRATION  
APPROVED AS A TAX MAP PURSUANT TO THE AUTHORITY OF N.J.S.A. 54:15-2.4(a)  
FOR THE DIRECTOR, DIVISION OF TAXATION  
*James J. ...* C.T.A.  
WILLIAM H. ... C.T.A.  
DATE: MAY 4 - 2000 SERIAL NO. 789

TAX MAP  
TOWNSHIP OF NORTH BRUNSWICK  
MIDDLESEX COUNTY, NEW JERSEY  
SCALE : 1" = 100'  
JUNE 1998  
RAYMOND E. BORUP JR., P.L.S.  
CME ASSOCIATES  
3141 BORDENTOWN AVENUE, PARLIN  
NEW JERSEY, 08859

SHEET 3