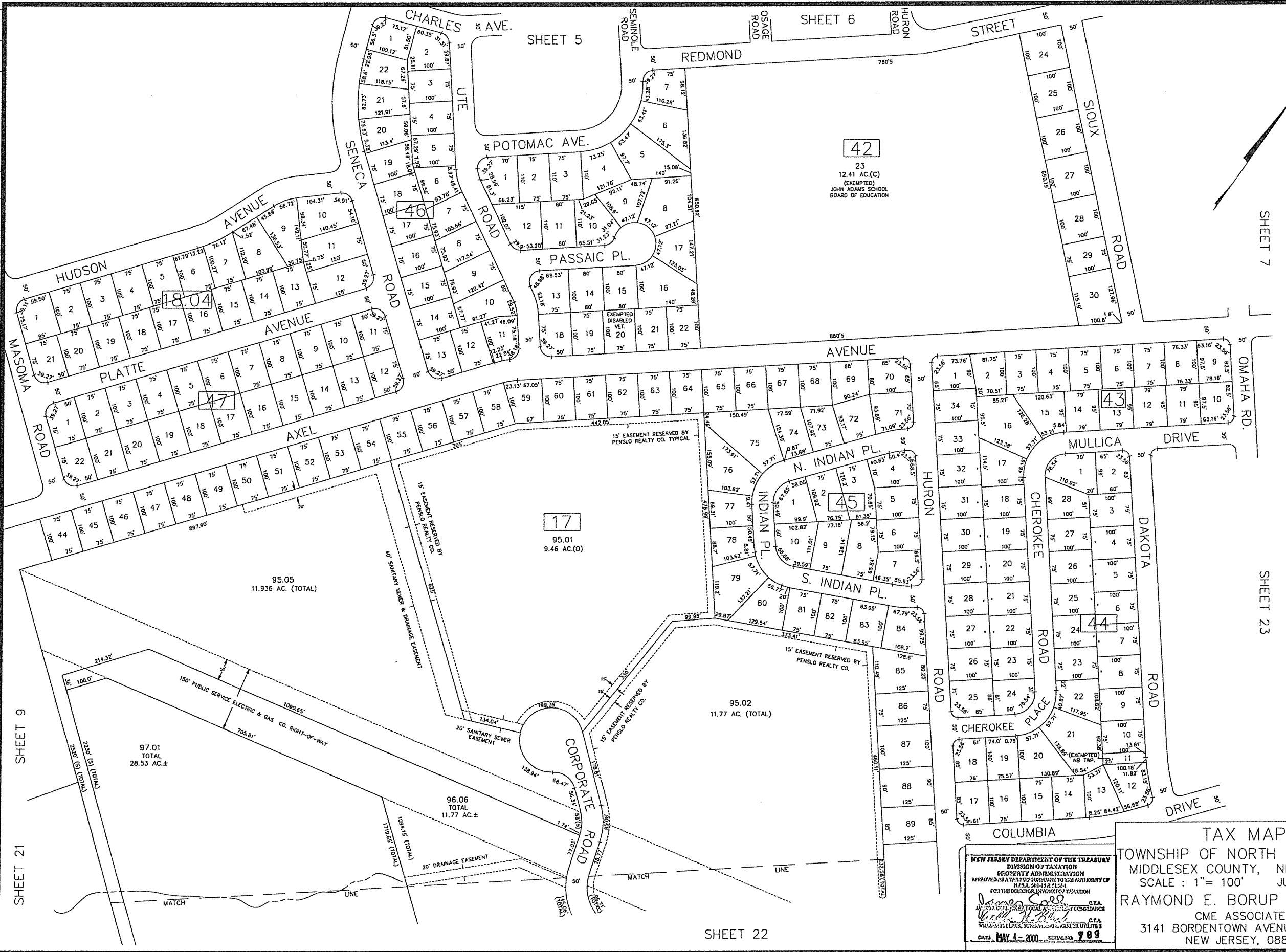


4/2000 BLK 17 LOT 95.01 EXEMPTED ADDED
 BLK 17 LOTS 96.03, 96.04, SUBDIV.
 NEW LOTS 96.05, 96.06
 REVISED DESCRIPTION
 P.R. REV. BY CHC



SHEET 9

SHEET 21

SHEET 5

SHEET 6

SHEET 7

SHEET 23

SHEET 22

NEW JERSEY DEPARTMENT OF THE TREASURY
 DIVISION OF TAXATION
 PROPERTY ADMINISTRATION
 APPROVED AS A TAX MAP PRESENTED TO THE AUTHORITY OF
 N.J.A.C. 17:27-15.2 (b)
 FOR THE DIRECTOR, DIVISION OF TAXATION
James S. ... C.T.A.
... C.T.A.
 DATE: MAY 4, 2000 SERIAL NO. 789

TAX MAP
 TOWNSHIP OF NORTH BRUNSWICK
 MIDDLESEX COUNTY, NEW JERSEY
 SCALE: 1" = 100' JUNE 1998
 RAYMOND E. BORUP JR., P.L.S.
 CME ASSOCIATES
 3141 BORDENTOWN AVENUE, PARLIN
 NEW JERSEY, 08859