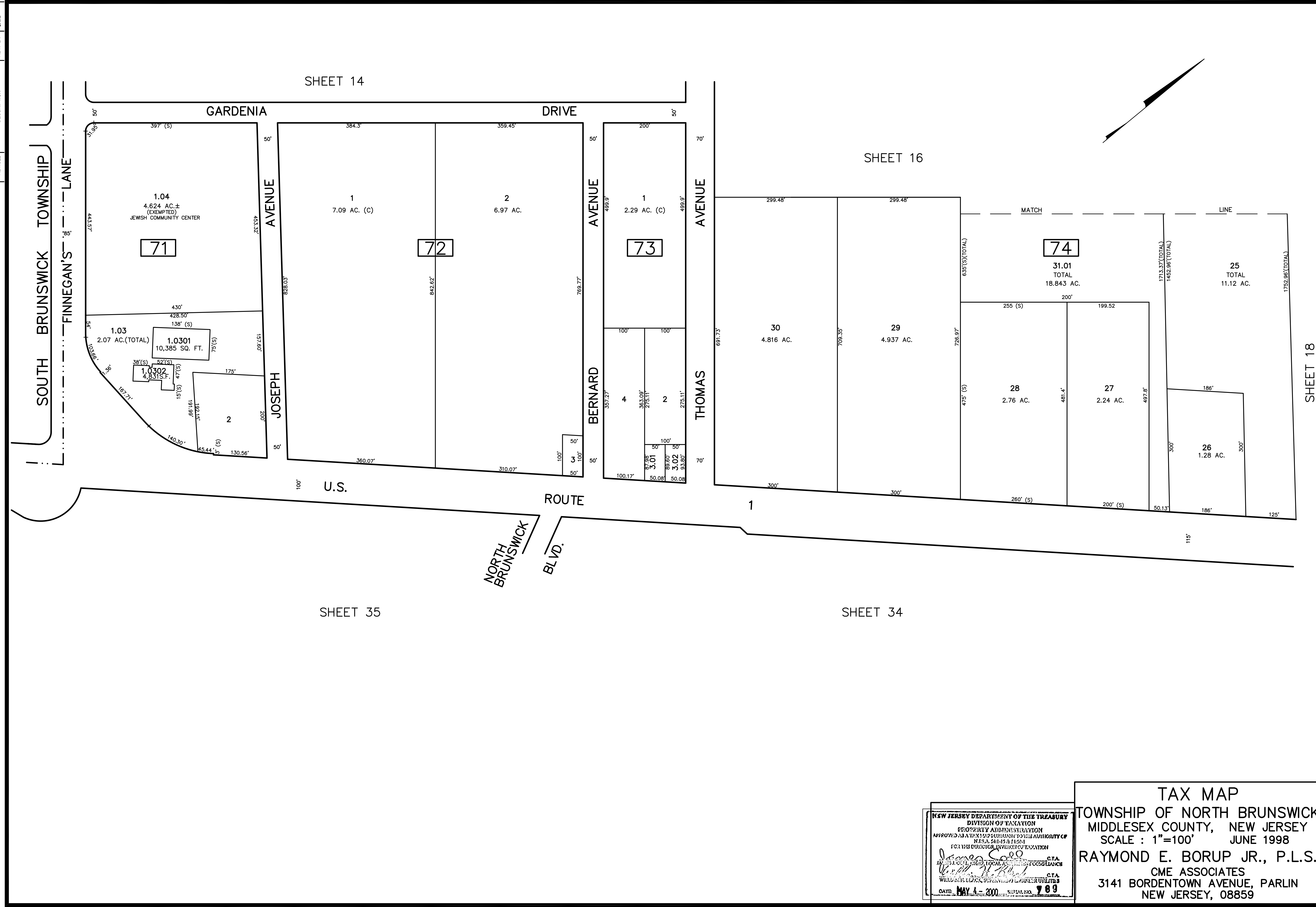


2/2017	REVISED	BLK 71 L1.03 CONDO. ADDED	R.R.	CHK.
		DESCRIPTION	REV. BY	



NEW JERSEY DEPARTMENT OF THE TREASURY
 DIVISION OF TAXATION
 PROPERTY ADMINISTRATION
 APPROVED AS A TAX MAP PURSUANT TO THE AUTHORITY OF
 N.J.S.A. 54:15 & 16-24
 FOR THE DIRECTOR, DIVISION OF TAXATION
James S. ... C.T.A.
 JAMES S. ... C.T.A.
 WILLIAM B. ... C.T.A.
 DATE: MAY 4 - 2000 SERIAL NO. 789

TAX MAP
 TOWNSHIP OF NORTH BRUNSWICK
 MIDDLESEX COUNTY, NEW JERSEY
 SCALE : 1"=100' JUNE 1998
 RAYMOND E. BORUP JR., P.L.S.
 CME ASSOCIATES
 3141 BORDENTOWN AVENUE, PARLIN
 NEW JERSEY, 08859