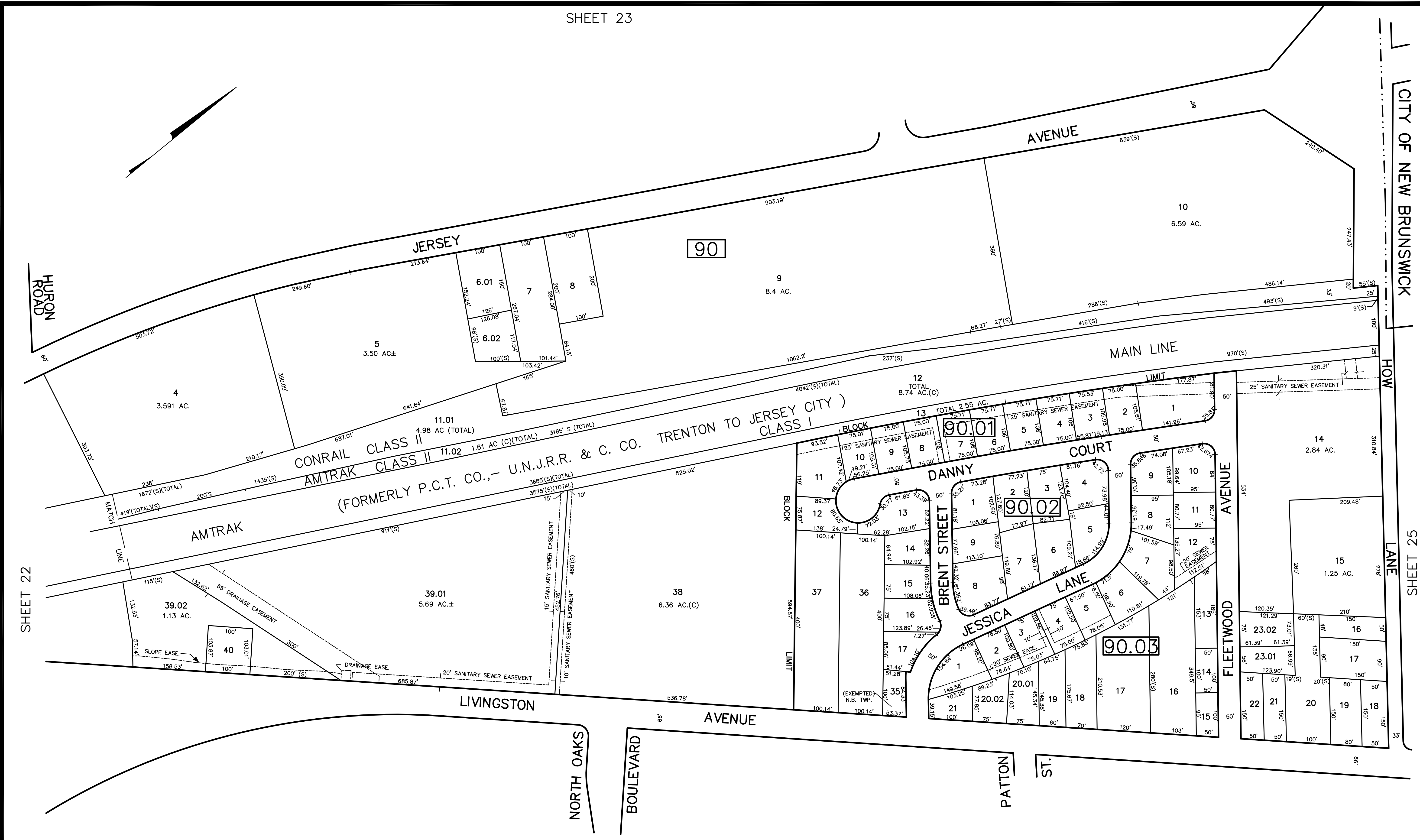


REVISED	DESCRIPTION	REV. BY	CHK.
2/2017	BLK 90 L23 SUBDIVISION		
3/2016	BLK 90 L23 CHG TO BLK 90.01		
3/2016	BLK 90 L23 CHG TO BLK 90.01		
3/2016	BLK 90.03 LOT 20 SUBDIV		
7/2004	BLK 90 LOTS 39.01, 39.02, 40 SLOPE EASE. ADDED		



SHEET 22

CITY OF NEW BRUNSWICK

LANE 25 SHEETS

SHEET 30

SHEET 29

NEW JERSEY DEPARTMENT OF THE TREASURY
 DIVISION OF TAXATION
 PROPERTY ADMINISTRATION
 APPROVED AS A TAX MAP PURSUANT TO THE AUTHORITY OF
 N.J.S.A. 24:15 & 24:16
 FOR THE DIRECTOR, DIVISION OF TAXATION
James S. ... C.T.A.
 WILLIAM B. ... C.T.A.
 DATE: MAY 4 - 2000 SERIAL NO. 789

TAX MAP
 TOWNSHIP OF NORTH BRUNSWICK
 MIDDLESEX COUNTY, NEW JERSEY
 SCALE : 1" = 100' JUNE 1998
 RAYMOND E. BORUP JR., P.L.S.
 CME ASSOCIATES
 3141 BORDENTOWN AVENUE, PARLIN
 NEW JERSEY, 08859