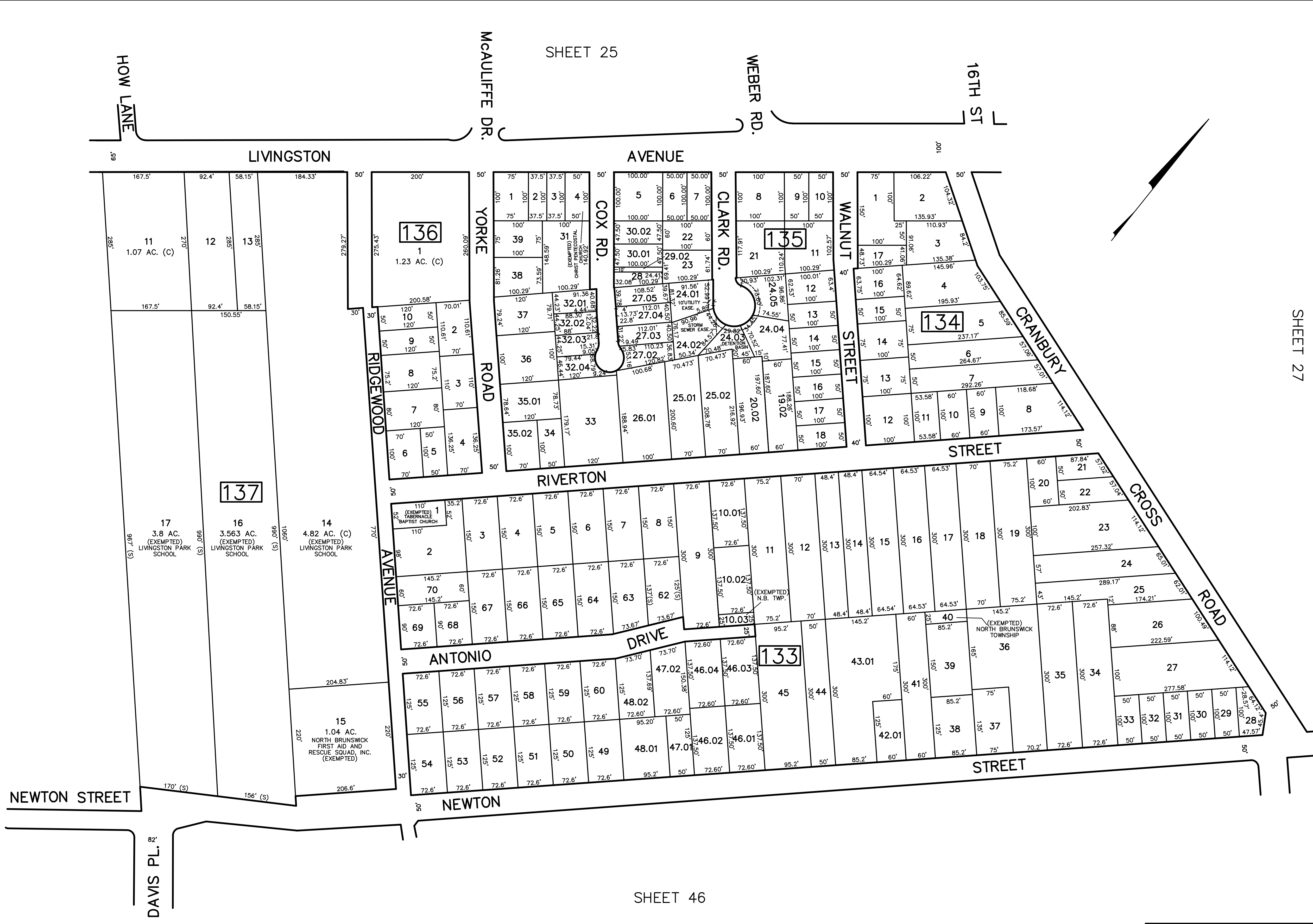


9/2010	REVISED	DESCRIPTION	REV. BY	CHK.
4/2004	REVISED	DESCRIPTION	REV. BY	CHK.
1/2000	REVISED	DESCRIPTION	REV. BY	CHK.

SHEET 29



SHEET 47

SHEET 46

SHEET 25

SHEET 27

NEW JERSEY DEPARTMENT OF THE TREASURY
 DIVISION OF TAXATION
 PROPERTY ADMINISTRATION
 APPROVED AS A TAX MAP PURSUANT TO THE AUTHORITY OF
 N.J.S.A. 54:15-8 & 15-9
 FOR THE DIRECTOR, DIVISION OF TAXATION
James C. ... CTA
 WILLIAM E. ... CTA
 DATE: MAY 4 - 2000 SERIAL NO. 789

TAX MAP
 TOWNSHIP OF NORTH BRUNSWICK
 MIDDLESEX COUNTY, NEW JERSEY
 SCALE : 1" = 100' JUNE 1998
 RAYMOND E. BORUP JR., P.L.S.
 CME ASSOCIATES
 3141 BORDENTOWN AVENUE, PARLIN
 NEW JERSEY, 08859