

1/2000	PL 151, L10 SUBDIVISION	REVISION	CHK.
4/2003	PL 148, LB 01 7.03 ROW TAKING		
5/2010	BLK 153 LOT 5 SUBDIVISION		
4/2004	BLK 149 LOTS 1, 2, 3, 4, 5, 6, 7, 8, 9, 10, 11, 12, 13, 14, 15, 16, 17, 18, 19, 20, 21, 22, 23, 24, 25, 26, 27, 28, 29, 30, 31, 32, 33, 34, 35, 36, 37, 38, 39, 40, 41, 42, 43, 44, 45, 46, 47, 48, 49, 50, 51, 52, 53, 54, 55, 56, 57, 58, 59, 60, 61, 62, 63, 64, 65, 66, 67, 68, 69, 70, 71, 72, 73, 74, 75, 76, 77, 78, 79, 80, 81, 82, 83, 84, 85, 86, 87, 88, 89, 90, 91, 92, 93, 94, 95, 96, 97, 98, 99, 100		
	NEW LOTS 8.01, 7.03		
	NEW LOTS 8.01, 7.03		
	NEW LOTS 8.01, 7.03		

COMMERCE BLVD.

SHEET 19

SHEET 20

THALIA ST.

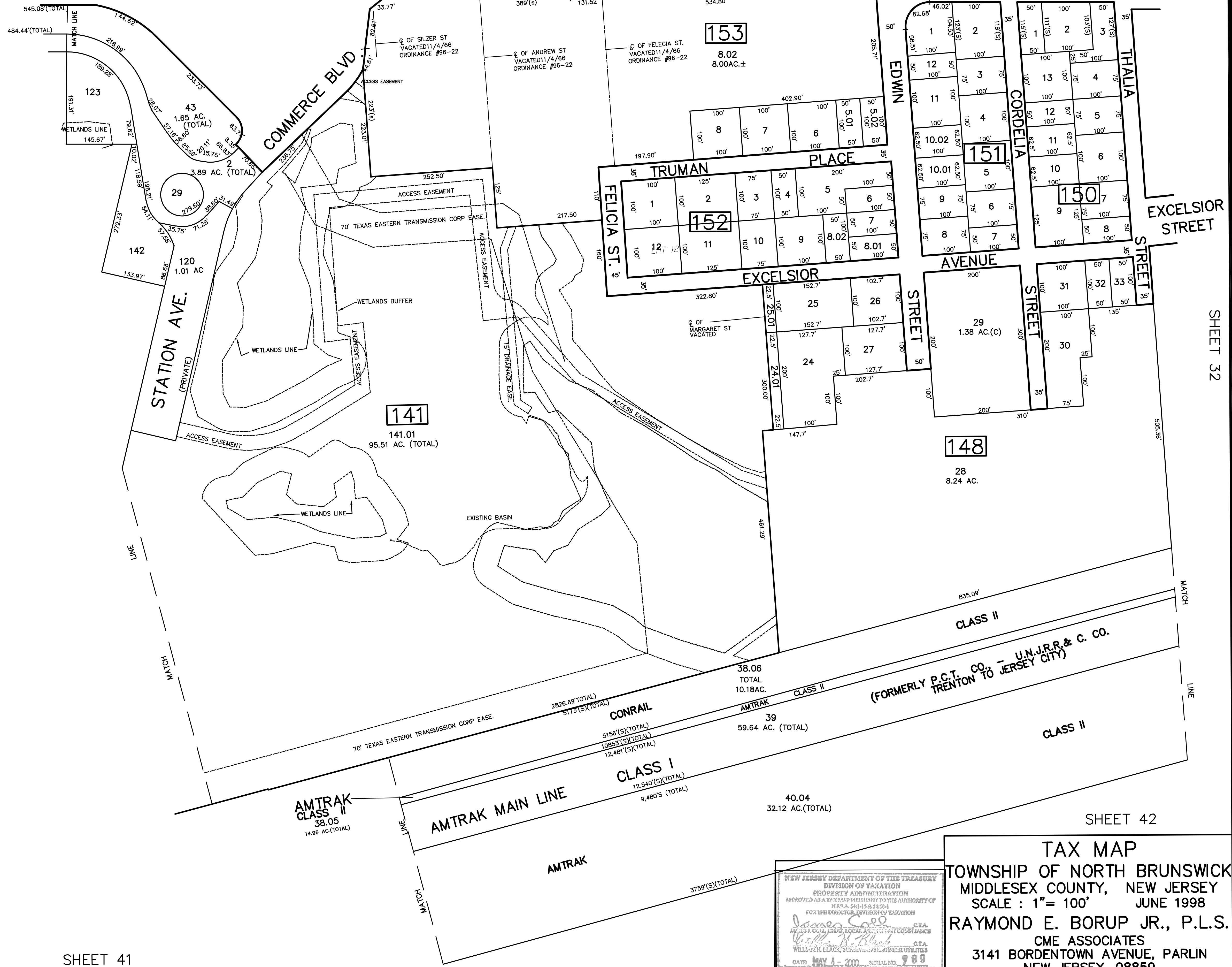
U.S.

120'

ROUTE 1

134.5'

NEW JERSEY STATE HIGHWAY ROUTE #1



SHEET 33.01, 34

SHEET 32

SHEET 42

SHEET 41

NEW JERSEY DEPARTMENT OF THE TREASURY
 DIVISION OF TAXATION
 PROPERTY ADMINISTRATION
 APPROVED AS A TAX MAP PURSUANT TO THE AUTHORITY OF
 N.J.S.A. 54:15 & 54:24
 FOR THE DIRECTOR, DIVISION OF TAXATION
James G. ... C.T.A.
 WILLIAM E. ... C.T.A.
 DATE: MAY 4 - 2000 SERIAL NO. 789

TAX MAP
 TOWNSHIP OF NORTH BRUNSWICK
 MIDDLESEX COUNTY, NEW JERSEY
 SCALE: 1" = 100' JUNE 1998
 RAYMOND E. BORUP JR., P.L.S.
 CME ASSOCIATES
 3141 BORDENTOWN AVENUE, PARLIN
 NEW JERSEY, 08859