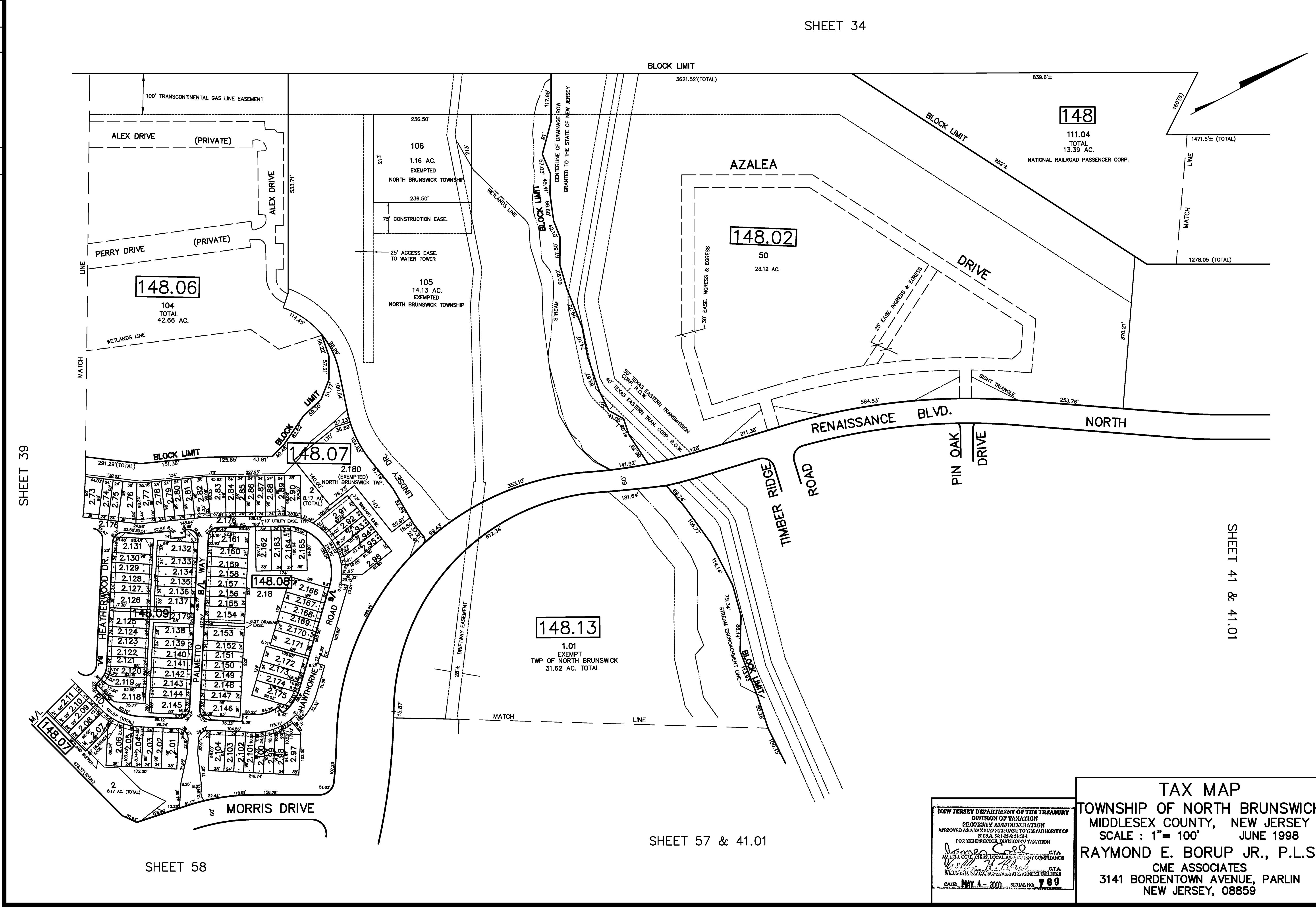


REV.	BY	CHK.	DESCRIPTION
6/2012			ADJUST REINSTATEMENT SUBDIVISIONS
3/2008			BLK. 148.13 LOT 1 SUBDIVISION
4/2007			BLK. 148.06 LOT 106 & BLK. 148.07
7/2004			REINSTATEMENT SEC. 2 & 3 ADDED



SHEET 39

SHEET 41 & 41.01

SHEET 58

SHEET 57 & 41.01

NEW JERSEY DEPARTMENT OF THE TREASURY  
 DIVISION OF TAXATION  
 PROPERTY ADMINISTRATION  
 APPROVED AS A MAP SUBMITTING TO THE AUTHORITY OF  
 N.J.S.A. 54:15-6.1 & 6.2  
 FOR THE DIRECTOR, DIVISION OF TAXATION

*James S. ...* C.T.A.  
*William E. ...* C.T.A.

DATE: MAY 4 - 2000 SERIAL NO. 789

**TAX MAP**  
 TOWNSHIP OF NORTH BRUNSWICK  
 MIDDLESEX COUNTY, NEW JERSEY  
 SCALE: 1" = 100' JUNE 1998  
 RAYMOND E. BORUP JR., P.L.S.  
 CME ASSOCIATES  
 3141 BORDENTOWN AVENUE, PARLIN  
 NEW JERSEY, 08859