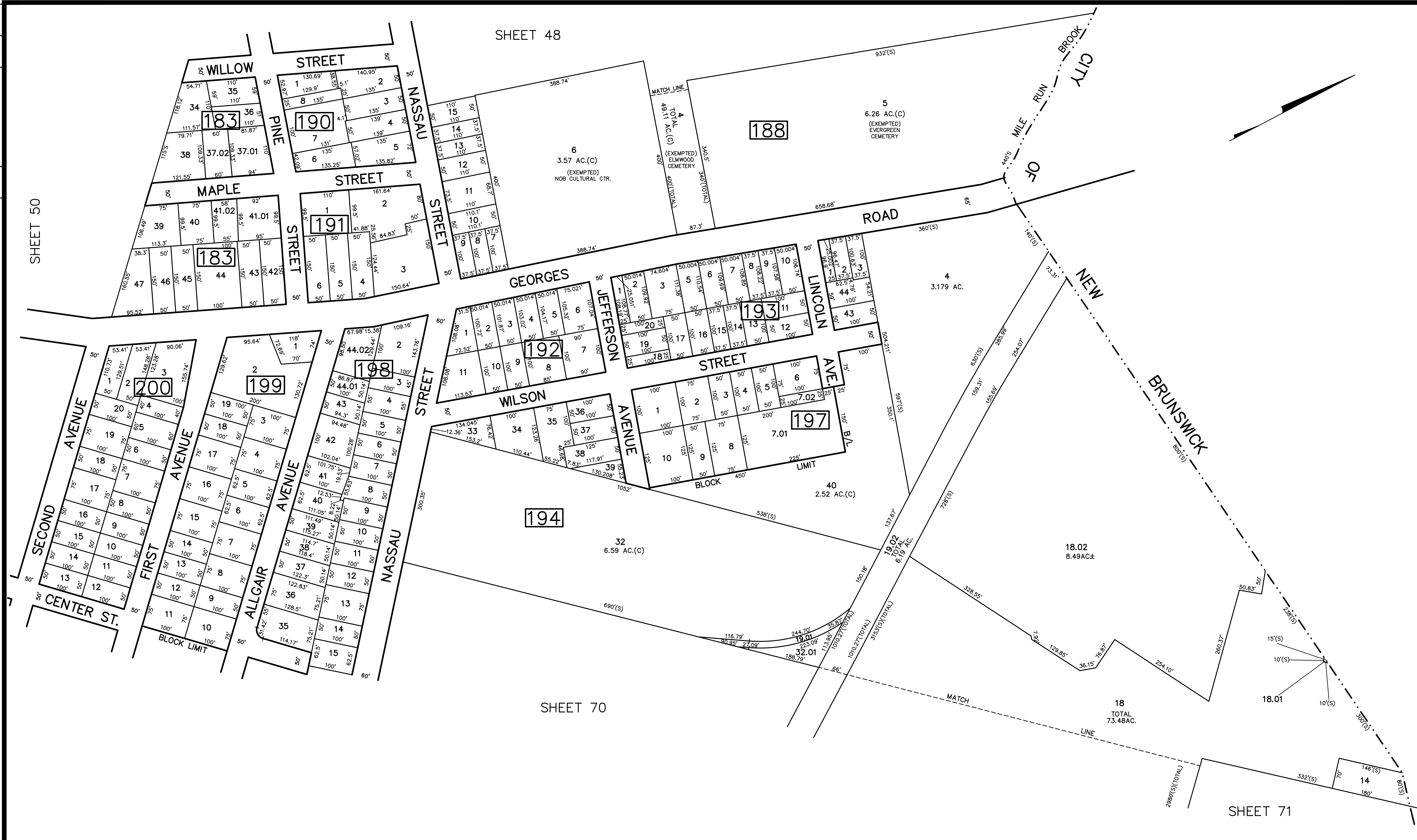


REV.	BY	CHK.	DESCRIPTION
2/2012	R.R.		BLK 188 LG EXEMPTED ADDED
9/2009	R.R.		NEW LG REV PER DEED
5/2009	R.R.		NEW LG 32.01
7/2007	R.R.		BLK 194 L19 461 taking
4/2004	R.R.		BLK 198 LOTS 1,44 SUBDIVISION
			REVISED



NEW JERSEY DEPARTMENT OF THE TREASURY
 DIVISION OF TAXATION
 PROPERTY ADMINISTRATION
 APPROVED AS A TAX MAP PURSUANT TO THE AUTHORITY OF
 N.J.S.A. 54:15 & 54:20-1
 FOR THE DIRECTOR, DIVISION OF TAXATION
James S. ... C.T.A.
... C.T.A.
 DATE: MAY 4, 2000 SERIAL NO. 769

TAX MAP
 TOWNSHIP OF NORTH BRUNSWICK
 MIDDLESEX COUNTY, NEW JERSEY
 SCALE : 1" = 100' JUNE 1998
 RAYMOND E. BORUP JR., P.L.S.
 CME ASSOCIATES
 3141 BORDENTOWN AVENUE, PARLIN
 NEW JERSEY, 08859