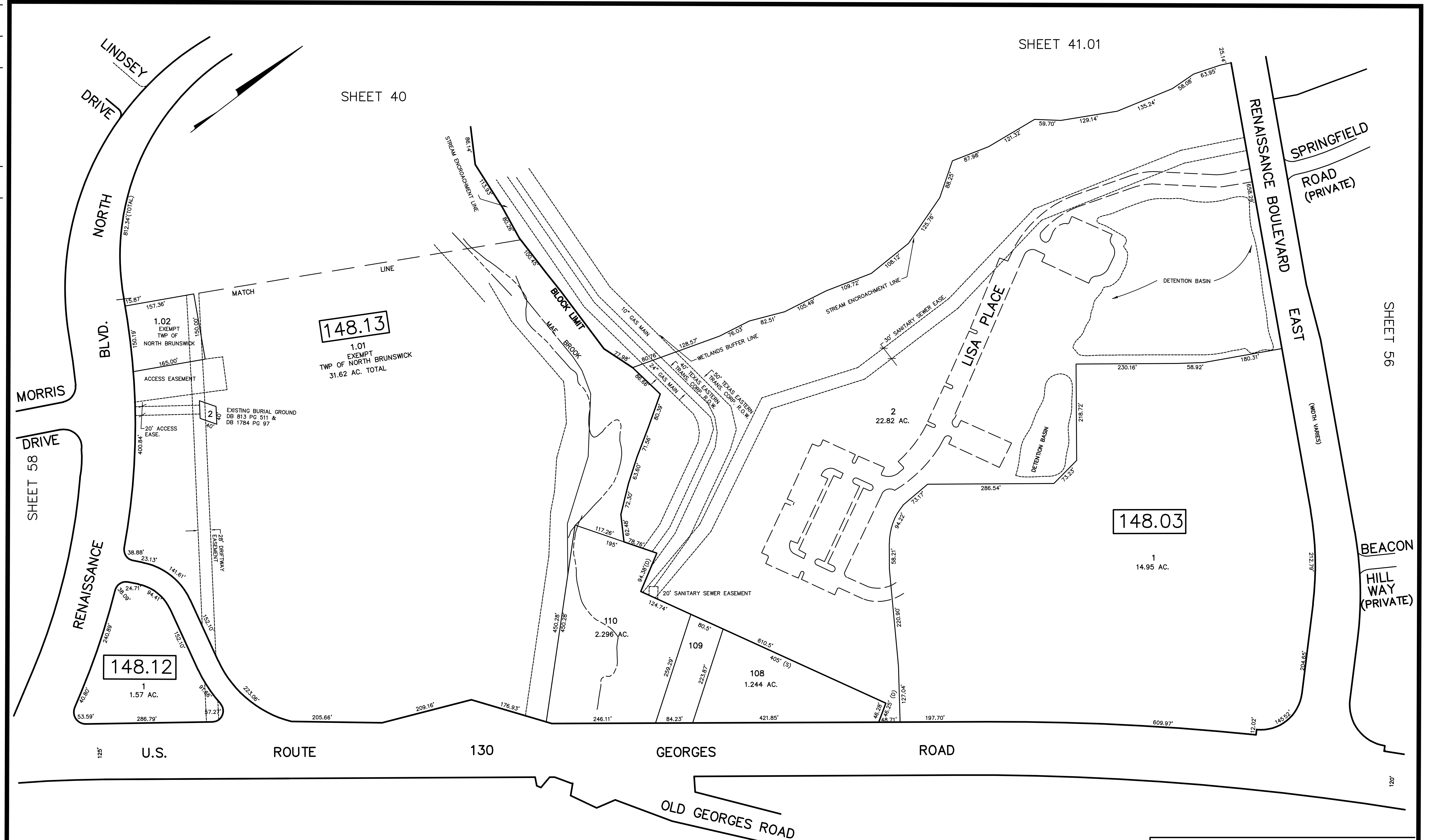


REV.	BY	CHK.	DESCRIPTION
5/2015	BL 148.13		REVISED
6/2012	RR		ADJUST RENAISSANCE SUBDIVISIONS
3/2008	A.G.		BLK 148.13 LOT 1 SUBDIVISION
6/2004	R.R.		RENAISSANCE SEC 2 & 3
			ADDED



SHEET 41.01

SHEET 40

SHEET 56

SHEET 58

SHEET 61

SHEET 62

NEW JERSEY DEPARTMENT OF THE TREASURY
 DIVISION OF TAXATION
 PROPERTY ADMINISTRATION
 APPROVED AS A MAP SUBSTANTIAL TO THE AUTHORITY OF
 N.J.S.A. 54:15 & 14-20.1
 FOR THE COMMISSIONER, DIVISION OF TAXATION
James S. Carr C.T.A.
William J. Borup Jr. C.T.A.
 DATE: MAY 4 - 2009 SERIAL NO. 789

TAX MAP
 TOWNSHIP OF NORTH BRUNSWICK
 MIDDLESEX COUNTY, NEW JERSEY
 SCALE : 1" = 100' JUNE 1998
 RAYMOND E. BORUP JR., P.L.S.
 CME ASSOCIATES
 3141 BORDENTOWN AVENUE, PARLIN
 NEW JERSEY, 08859