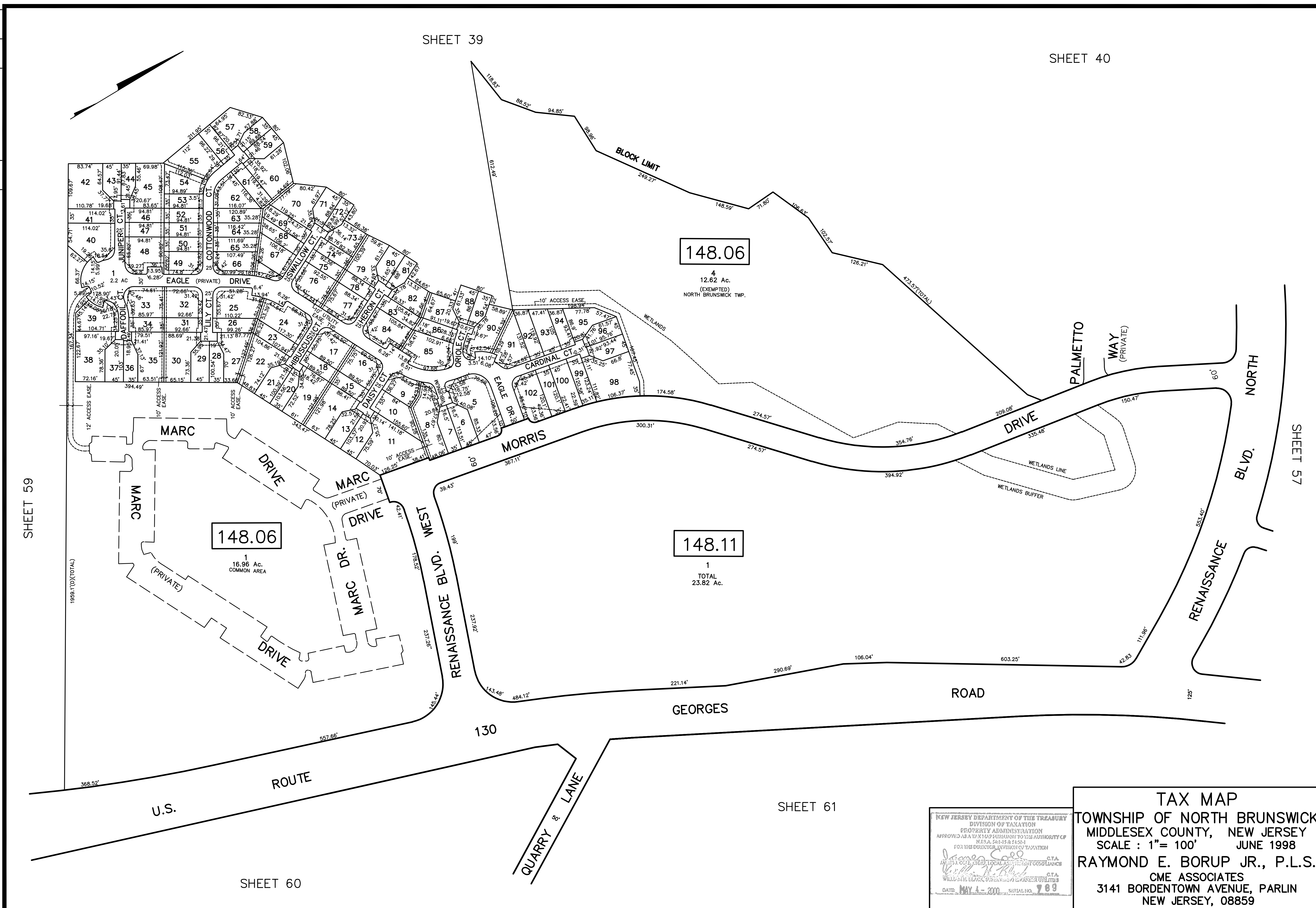


6/2002 REVISED	ADJUST RENAISSANCE SUBDIVISIONS CORRECTED RENAISSANCE SEC. 3 ADDED	DESCRIPTION	REV. BY	CHK.

SHEET 39

SHEET 40



SHEET 59

SHEET 57

SHEET 60

SHEET 61

NEW JERSEY DEPARTMENT OF THE TREASURY
DIVISION OF TAXATION
PROPERTY ADMINISTRATION
APPROVED AS A TAX MAP PURSUANT TO THE AUTHORITY OF
N.J.S.A. 54:15 & 54:20-1
FOR THE DIRECTOR, DIVISION OF TAXATION

Janeen Cole C.T.A.
William H. Clark C.T.A.

DATE: MAY 4 - 2000 SERIAL NO. 789

TAX MAP
TOWNSHIP OF NORTH BRUNSWICK
MIDDLESEX COUNTY, NEW JERSEY
SCALE : 1" = 100' JUNE 1998
RAYMOND E. BORUP JR., P.L.S.
CME ASSOCIATES
3141 BORDENTOWN AVENUE, PARLIN
NEW JERSEY, 08859