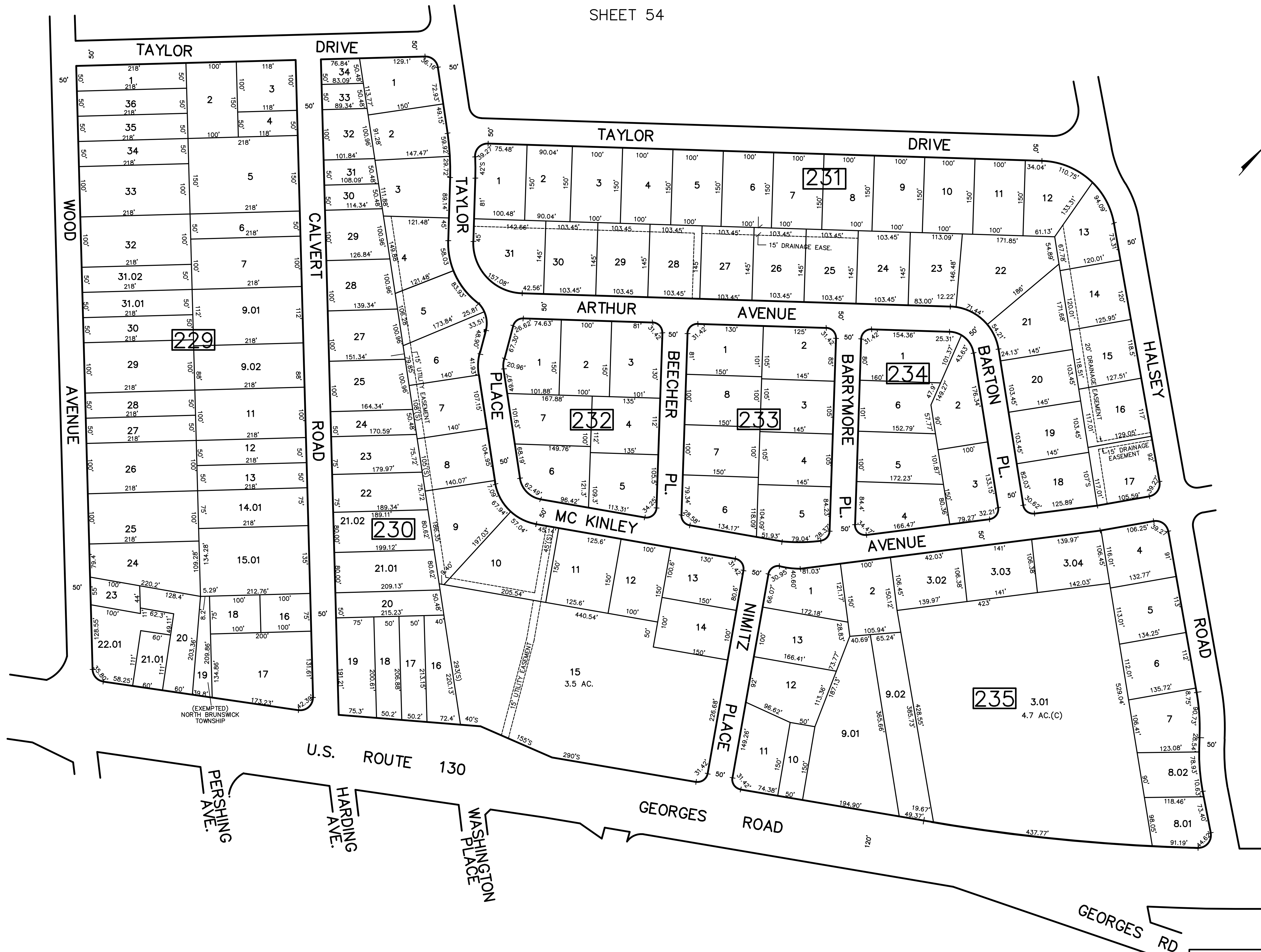


2/2017	BLK 230 LOTS 1-3 SUBDIV	REVISED	REV. BY	CHK.
2/2015	BLK 230 LOTS 1-3 SUBDIV			
4/2008	BLK 229 LOTS 14,15 SUBDIV			
2/2006	BLK 229 LOTS 8,9,10 SUBDIV			

SHEET 55

SHEET 64



SHEET 66

SHEET 78

SHEET 77

NEW JERSEY DEPARTMENT OF THE TREASURY
 DIVISION OF TAXATION
 PROPERTY ADMINISTRATION
 APPROVED AS A TAX MAP PURSUANT TO THE AUTHORITY OF
 N.J.S.A. 54:15 & 54:20-1
 FOR THE DIRECTOR, DIVISION OF TAXATION
James S. ... C.T.A.
 WILLIAM S. ... C.T.A.
 DATE: MAY 4 - 2000 SERIAL NO. 789

TAX MAP
 TOWNSHIP OF NORTH BRUNSWICK
 MIDDLESEX COUNTY, NEW JERSEY
 SCALE : 1" = 100' JUNE 1998
 RAYMOND E. BORUP JR., P.L.S.
 CME ASSOCIATES
 3141 BORDENTOWN AVENUE, PARLIN
 NEW JERSEY, 08859