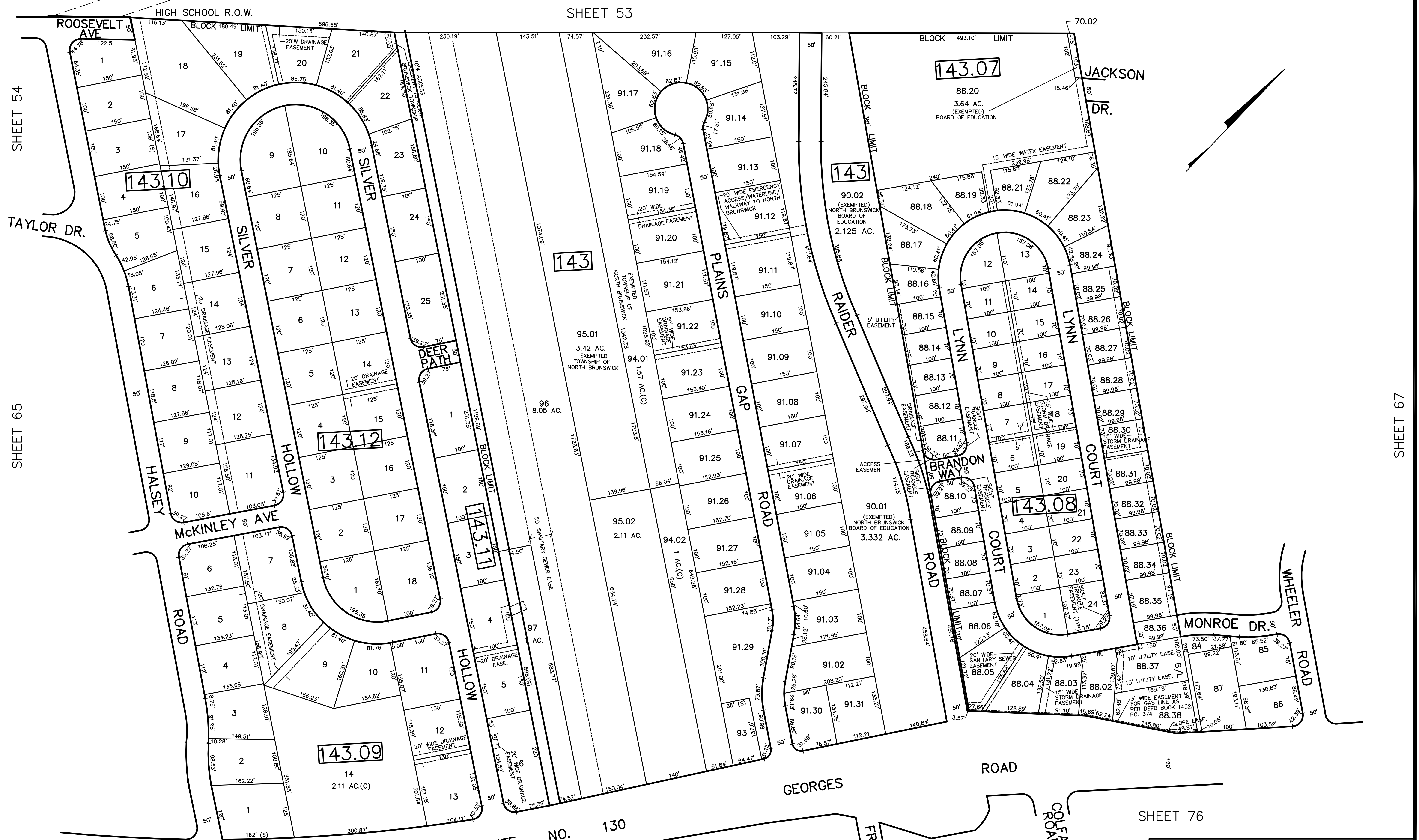


SHEET 53

2/2014	BLK 143.07 BLK 143.11 L4.5	RR.	REV. BY	CHK.
3/2011	BLK 143.07 BLK 143.11 L4.5	RR.		
5/2009	BLK 143.07 BLK 143.11 L4.5	RR.		
5/2009	BLK 143.07 BLK 143.11 L4.5	RR.		
4/2004	BLK 143.07 BLK 143.11 L4.5	RR.		
2/2015	BLK 143.09 EASE ADDED	RR	REV. BY	CHK.



SHEET 54

SHEET 65

SHEET 67

SHEET 76

SHEET 77

NEW JERSEY DEPARTMENT OF THE TREASURY
 DIVISION OF TAXATION
 PROPERTY ADMINISTRATION
 APPROVED AS A TAX MAP PURSUANT TO THE AUTHORITY OF
 N.J.S.A. 54:15-8 & 54:15-9
 FOR THE DISTRICT OF TAXATION

James G. ... C.T.A.
William ... C.T.A.
 WILLIAMS LEAK, SURVEYING & ENGINEERING UTILITIES

DATE: MAY 4 - 2000 SERIAL NO. 789

TAX MAP
 TOWNSHIP OF NORTH BRUNSWICK
 MIDDLESEX COUNTY, NEW JERSEY
 SCALE : 1"= 100' JUNE 1998
 RAYMOND E. BORUP JR., P.L.S.
 CME ASSOCIATES
 3141 BORDENTOWN AVENUE, PARLIN
 NEW JERSEY, 08859