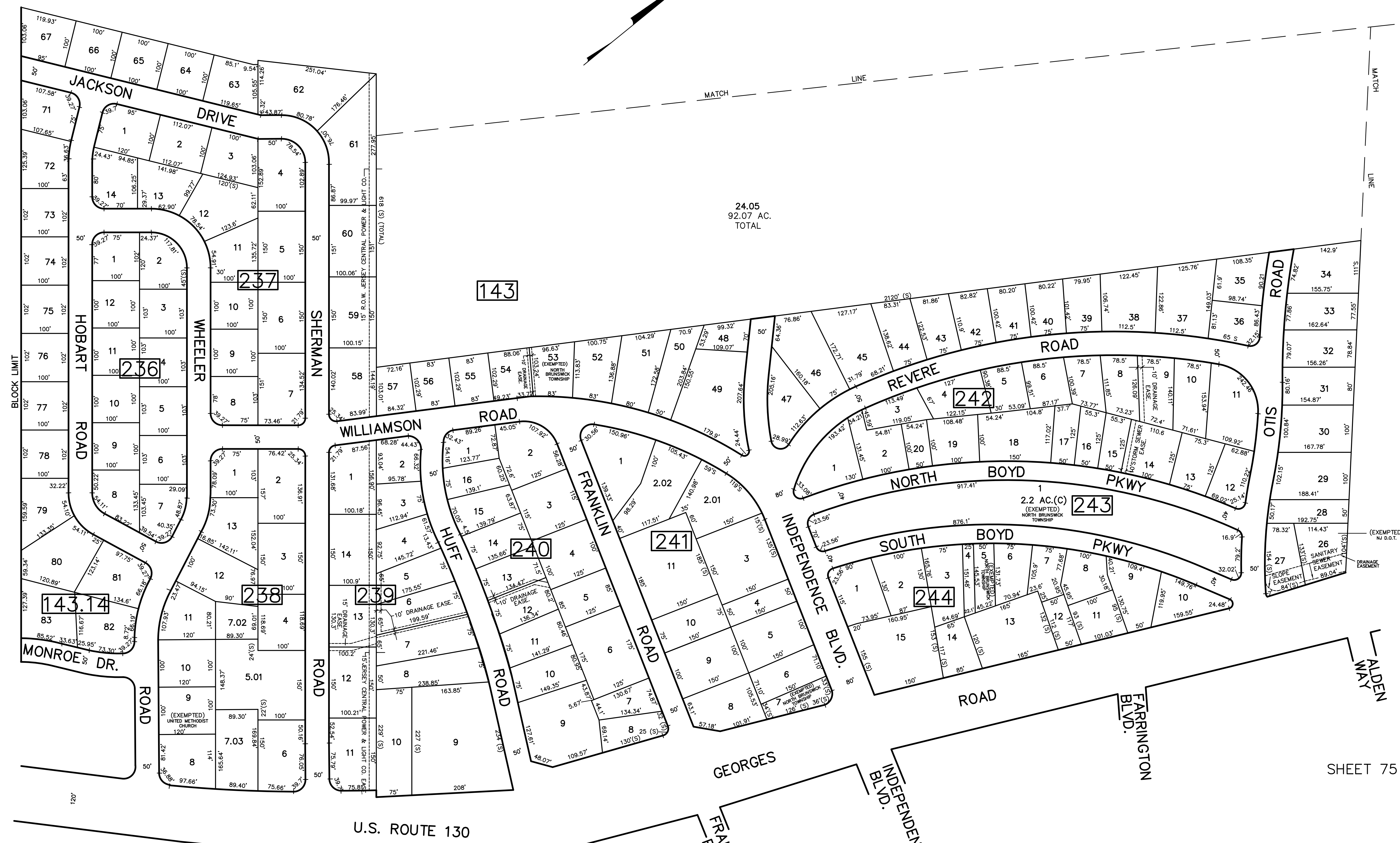


REV.	BY	CHK.	DESCRIPTION
1/2019			BLK 238 L12.13 DRAINAGE EASE
ADDED			BLK 241 L16-8 REVISED PER
2/2016			DEEDS & MAPS
5/2009			BLK 242 L14 EASE ADDED
3/2008			BLK 238 LOTS 7,5 SUBDIV
4/2004			BLK 143 LOTS 26, 27 DOT TAKING
REVISED			



SHEET 66

SHEET 68

SHEET 75

SHEET 76

NEW JERSEY DEPARTMENT OF THE TREASURY  
 DIVISION OF TAXATION  
 PROPERTY ADMINISTRATION  
 APPROVED AS A TAX MAP PURSUANT TO THE AUTHORITY OF  
 N.J.S.A. 54:13 & 54:14  
 FOR THE DIRECTOR, DIVISION OF TAXATION  
*James S. ...* C.T.A.  
 WILLIAM H. BLACK, SUPERVISOR OF LOCAL ASSESSMENT CONSULTANTS  
 DATE: MAY 4, 2000 SERIAL NO. 989

TAX MAP  
 TOWNSHIP OF NORTH BRUNSWICK  
 MIDDLESEX COUNTY, NEW JERSEY  
 SCALE : 1" = 100' JUNE 1998  
 RAYMOND E. BORUP JR., P.L.S.  
 CME ASSOCIATES  
 3141 BORDENTOWN AVENUE, PARLIN  
 NEW JERSEY, 08859