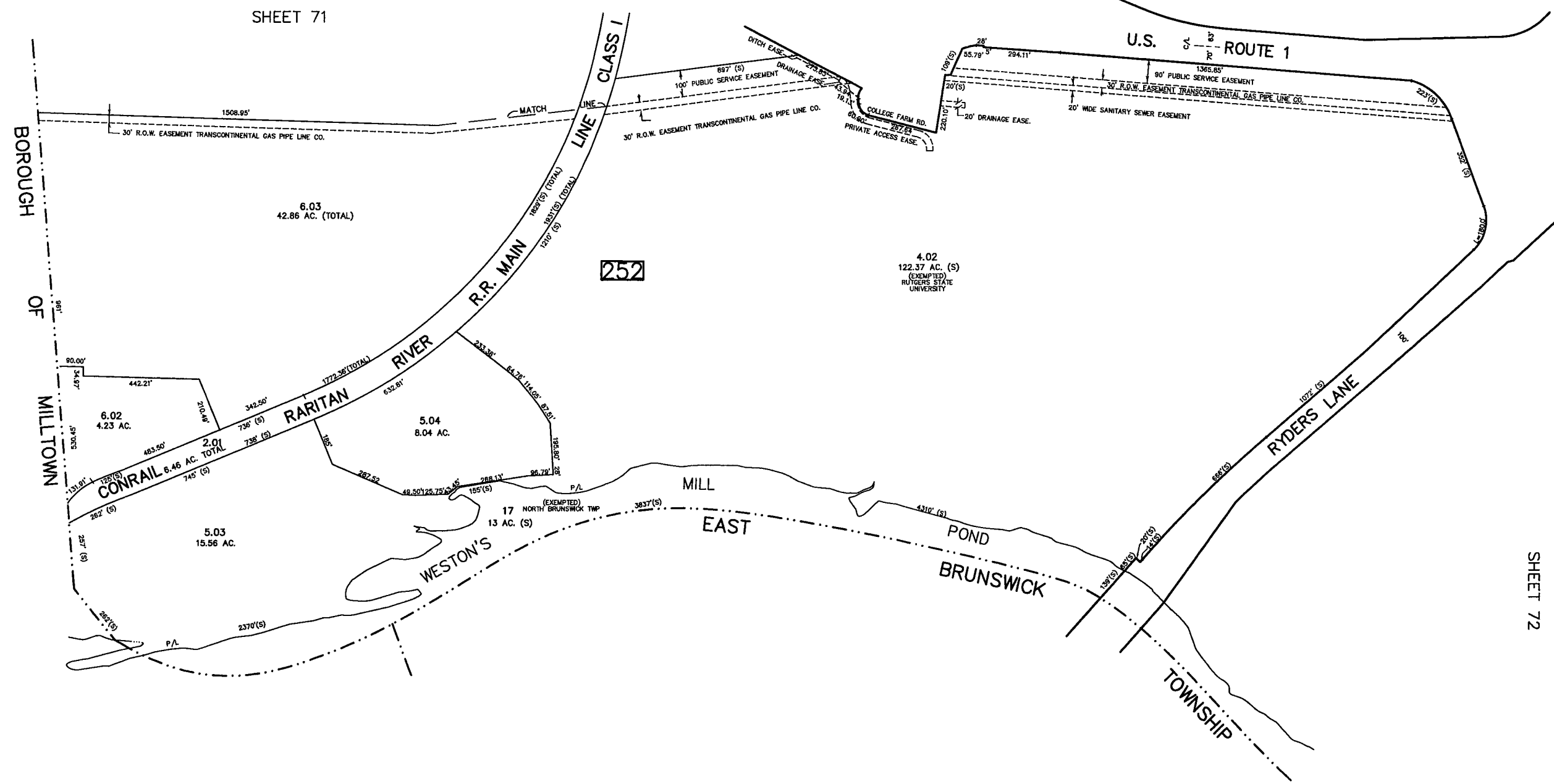


REVISED	DESCRIPTION	REV. BY	CHK.
4/2013	BL. 252 14.02 AC. REVISED SCALED	R.R.	
5/2011	BL. 252 14.02 PARCEL REORGANIZED	R.R.	
5/2010	BL. 252 17 ADDED	R.R.	
5/2008	BL. 252 14.02 L.P. PLANNING	R.R.	
5/2008	BL. 252 12 DOI PLANNING	R.R.	
5/2004	BL. 252 LOT 6 SUBDIVISION	R.R.	



SHEET 72

SHEET 72

NEW JERSEY DEPARTMENT OF THE TREASURY
 DIVISION OF TAXATION
 PROPERTY ADMINISTRATION
 APPROVED AS A TAX MAP PURSUANT TO THE AUTHORITY OF
 N.J.S.A. 54:15 & 15-3
 FOR THE DIRECTOR, DIVISION OF TAXATION

James C. ... G.T.A.
... G.T.A.
 DATE: MAY 1 - 2011 SERIAL NO. 788

TAX MAP
 TOWNSHIP OF NORTH BRUNSWICK
 MIDDLESEX COUNTY, NEW JERSEY
 SCALE: 1"=200' JUNE 1998
 RAYMOND E. BORUP JR., P.L.S.
 CME ASSOCIATES
 3141 BORDENTOWN AVENUE, PARLIN
 NEW JERSEY, 08859