

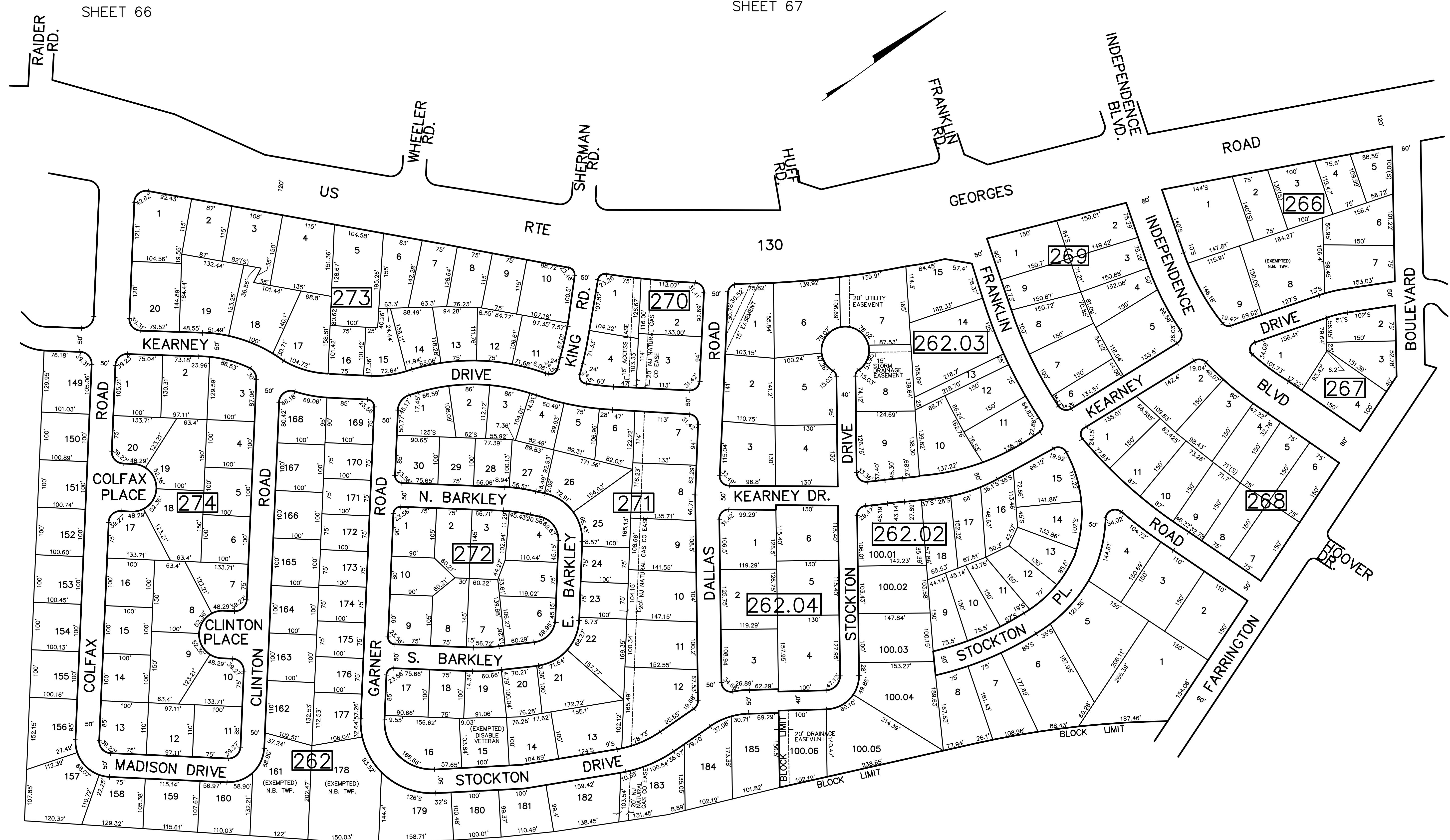
REV.	BY	CHK.
3/2000	R.R.	
3/2003	R.R.	
3/2004	R.R.	
3/2005	R.R.	
3/2006	R.R.	
3/2007	R.R.	
3/2008	R.R.	
3/2009	R.R.	
3/2010	R.R.	
3/2011	R.R.	
3/2012	R.R.	
3/2013	R.R.	
3/2014	R.R.	
3/2015	R.R.	
3/2016	R.R.	
3/2017	R.R.	
3/2018	R.R.	
3/2019	R.R.	
3/2020	R.R.	
3/2021	R.R.	
3/2022	R.R.	
3/2023	R.R.	
3/2024	R.R.	
3/2025	R.R.	
3/2026	R.R.	
3/2027	R.R.	
3/2028	R.R.	
3/2029	R.R.	
3/2030	R.R.	
3/2031	R.R.	
3/2032	R.R.	
3/2033	R.R.	
3/2034	R.R.	
3/2035	R.R.	
3/2036	R.R.	
3/2037	R.R.	
3/2038	R.R.	
3/2039	R.R.	
3/2040	R.R.	
3/2041	R.R.	
3/2042	R.R.	
3/2043	R.R.	
3/2044	R.R.	
3/2045	R.R.	
3/2046	R.R.	
3/2047	R.R.	
3/2048	R.R.	
3/2049	R.R.	
3/2050	R.R.	

SHEET 66

SHEET 67

SHEET 77

SHEET 75



SHEET 85

SHEET 86

NEW JERSEY DEPARTMENT OF THE TREASURY  
 DIVISION OF TAXATION  
 PROPERTY ADMINISTRATION  
 APPROVED AS A TAX MAP FOR THE TOWNSHIP OF NORTH BRUNSWICK, NEW JERSEY  
 N.J.S.A. 54:15 & 54:20  
 FOR THE DISTRICT OF NORTH BRUNSWICK, NEW JERSEY  
 DATE: MAY 4 - 2000 SERIAL NO. 789

TAX MAP  
 TOWNSHIP OF NORTH BRUNSWICK  
 MIDDLESEX COUNTY, NEW JERSEY  
 SCALE : 1" = 100' JUNE 1998  
 RAYMOND E. BORUP JR., P.L.S.  
 CME ASSOCIATES  
 3141 BORDENTOWN AVENUE, PARLIN  
 NEW JERSEY, 08859