

| | | | | |
|---------|----------------------------|------|---------|------|
| 1/2021 | BLK 224 L12 EASE ADDED | R.R. | REV. BY | CHK. |
| 2/2012 | LINE EASE ADDED | R.R. | | |
| 4/2004 | BLK 224 LOT 13 SUBDIVISION | R.R. | | |
| REVISED | DESCRIPTION | | | |

SHEET 60

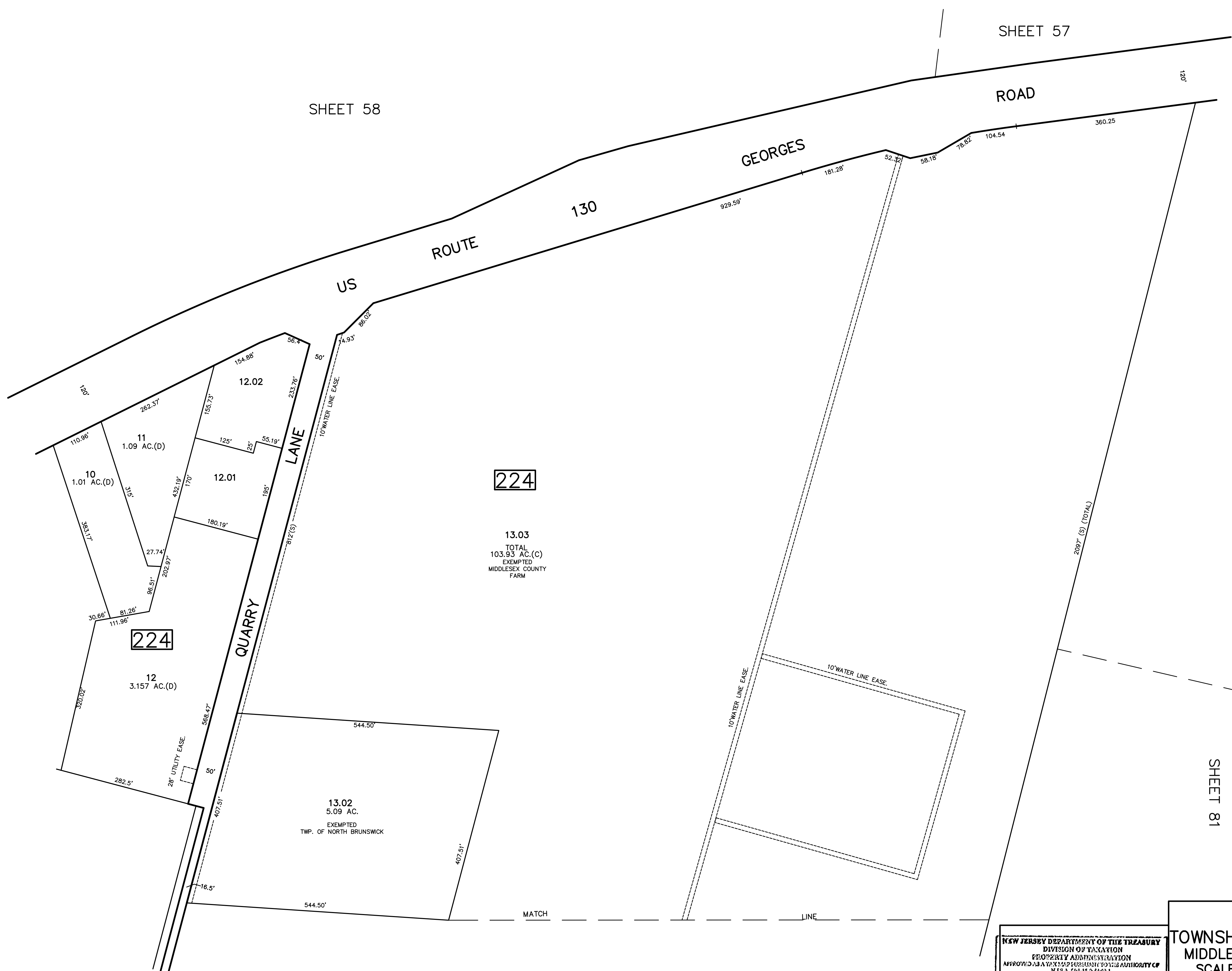
SHEET 58

SHEET 57

SHEET 62

SHEET 81

SHEET 82



224

224

NEW JERSEY DEPARTMENT OF THE TREASURY
 DIVISION OF TAXATION
 PROPERTY ADMINISTRATION
 APPROVED AS A TAX MAP SUBMITTAL TO THE AUTHORITY OF
 N.J.A.C. 17:27 & 17:28
 FOR THE DIRECTOR, DIVISION OF TAXATION
James S. ... C.T.A.
... C.T.A.
 DATE: MAY 4 - 2000 SERIAL NO. 789

TAX MAP
 TOWNSHIP OF NORTH BRUNSWICK
 MIDDLESEX COUNTY, NEW JERSEY
 SCALE : 1" = 100' JUNE 1998
 RAYMOND E. BORUP JR., P.L.S.
 CME ASSOCIATES
 3141 BORDENTOWN AVENUE, PARLIN
 NEW JERSEY, 08859