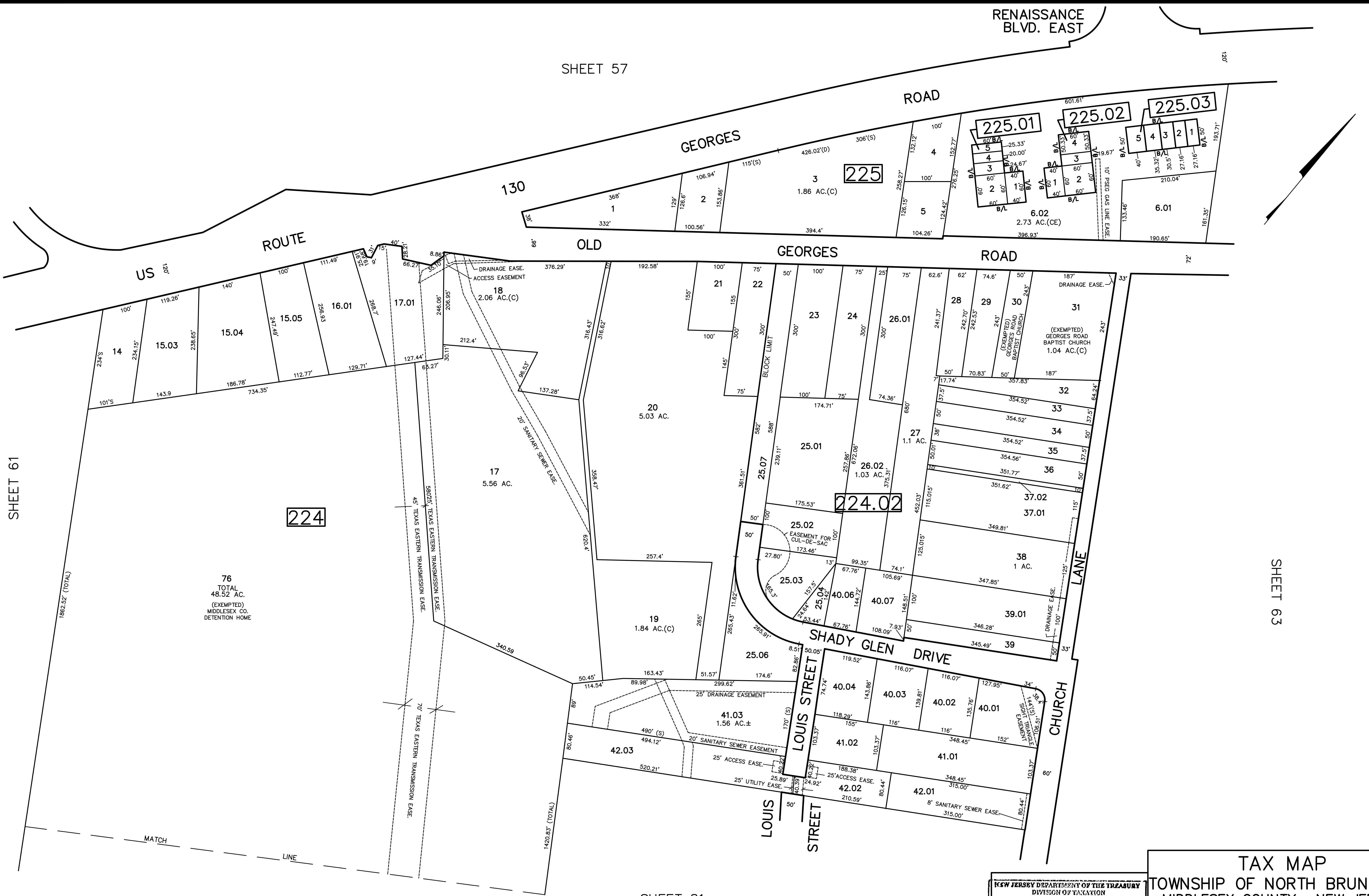


REV.	BY	CHK.	DESCRIPTION
1/2001			BLK 224 L12 CHG PER DEED
2/2002			BLK 224 L18 DRAIN EASE ADDED
5/2000			BLK 224 L17 L18 EASE ADDED
3/2008			38 EASE ADDED
3/2006			BLK 224 LOT 117.01 DOT TAKING
4/2004			BLK 224 LOT 42 SUBDIVISION
			REVISED



SHEET 61

SHEET 57

SHEET 63

SHEET 81

NEW JERSEY DEPARTMENT OF THE TREASURY
 DIVISION OF TAXATION
 PROPERTY ADVALORESTIMATION
 APPROVED AS A TAX MAP SUBMITTED TO THE AUTHORITY OF
 N.J.S.A. 54:15-3 & 54:15-4
 FOR THE CHIEF OF DIVISION OF TAXATION
James S. ... C.T.A.
William ... C.T.A.
 DATE: MAY 4 - 2000

TAX MAP
 TOWNSHIP OF NORTH BRUNSWICK
 MIDDLESEX COUNTY, NEW JERSEY
 SCALE : 1" = 100' JUNE 1998
 RAYMOND E. BORUP JR., P.L.S.
 CME ASSOCIATES
 3141 BORDENTOWN AVENUE, PARLIN
 NEW JERSEY, 08859