

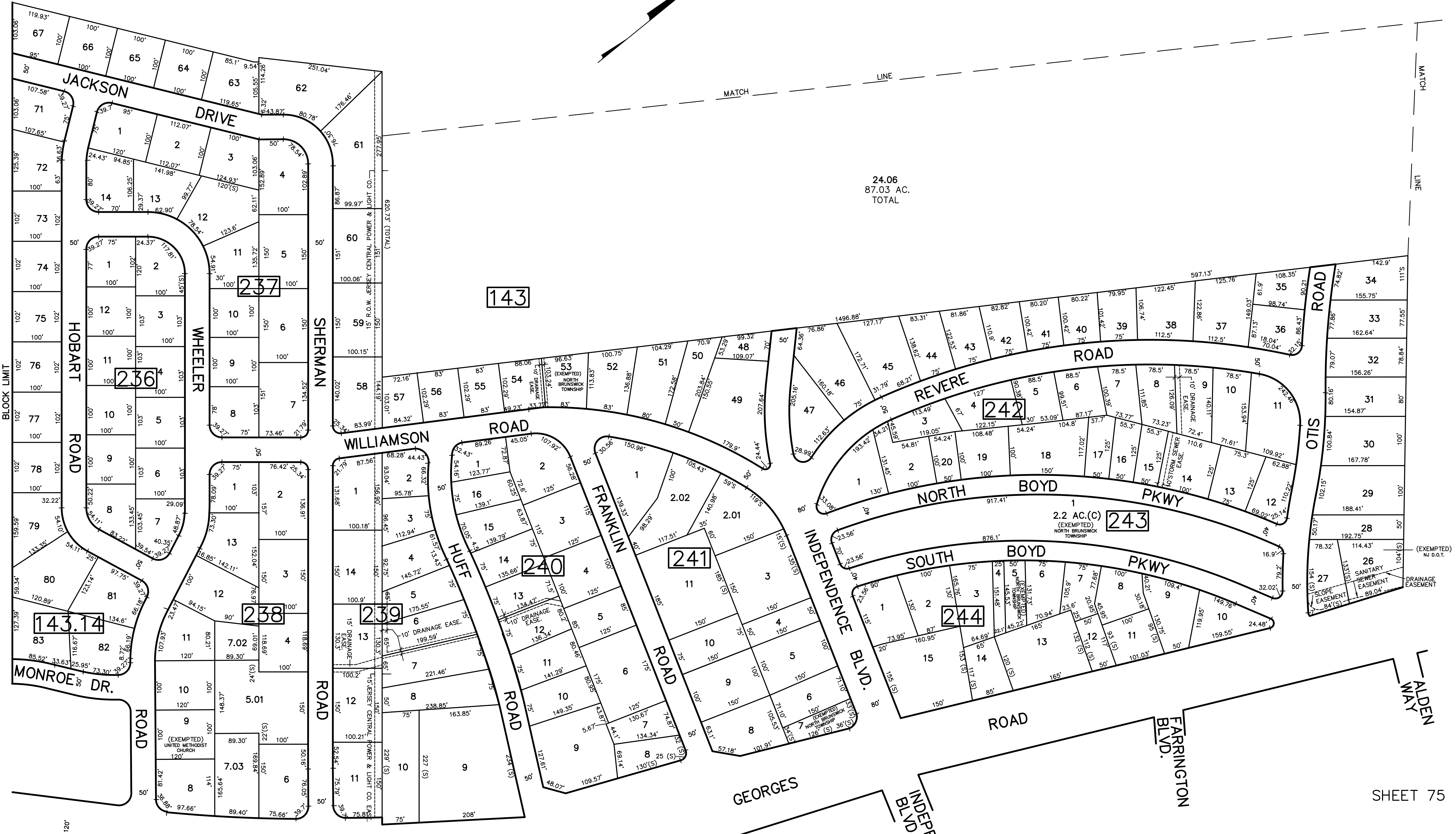
REV. BY	DESCRIPTION
R.R.	1/2021 BLK 143 L24.05 SUBDIVISION
R.R.	1/2019 BLK239 L12.13 DRAINAGE EASE
R.R.	ADDED
R.R.	1/2016 BLK 143 L24.05 REVISED PER
R.R.	2/2016 BLK 242 L1.4 EASE ADDED
R.R.	5/2009 BLK 242 L1.4 EASE ADDED
R.R.	3/2008 BLK 238 LOTS 26, 27 DOT TAKING
R.R.	4/2004 BLK 143 LOTS 26, 27 DOT TAKING
REVISED	

SHEET 53

SHEET 52

SHEET 66

SHEET 68



SHEET 76

SHEET 75

NEW JERSEY DEPARTMENT OF THE TREASURY  
 DIVISION OF TAXATION  
 GEOGRAPHIC ADMINISTRATION  
 APPROVED AS A TAX MAP PURSUANT TO THE AUTHORITY OF  
 N.J.S.A. 54:15-3.1  
 FOR THE DIRECTOR, DIVISION OF TAXATION  
*James S. ...* C.T.A.  
*William ...* C.T.A.  
 DATE: MAY 4, 2000 SUPPL. NO. 989

TAX MAP  
 TOWNSHIP OF NORTH BRUNSWICK  
 MIDDLESEX COUNTY, NEW JERSEY  
 SCALE : 1" = 100' JUNE 1998  
 RAYMOND E. BORUP JR., P.L.S.  
 CME ASSOCIATES  
 3141 BORDENTOWN AVENUE, PARLIN  
 NEW JERSEY, 08859