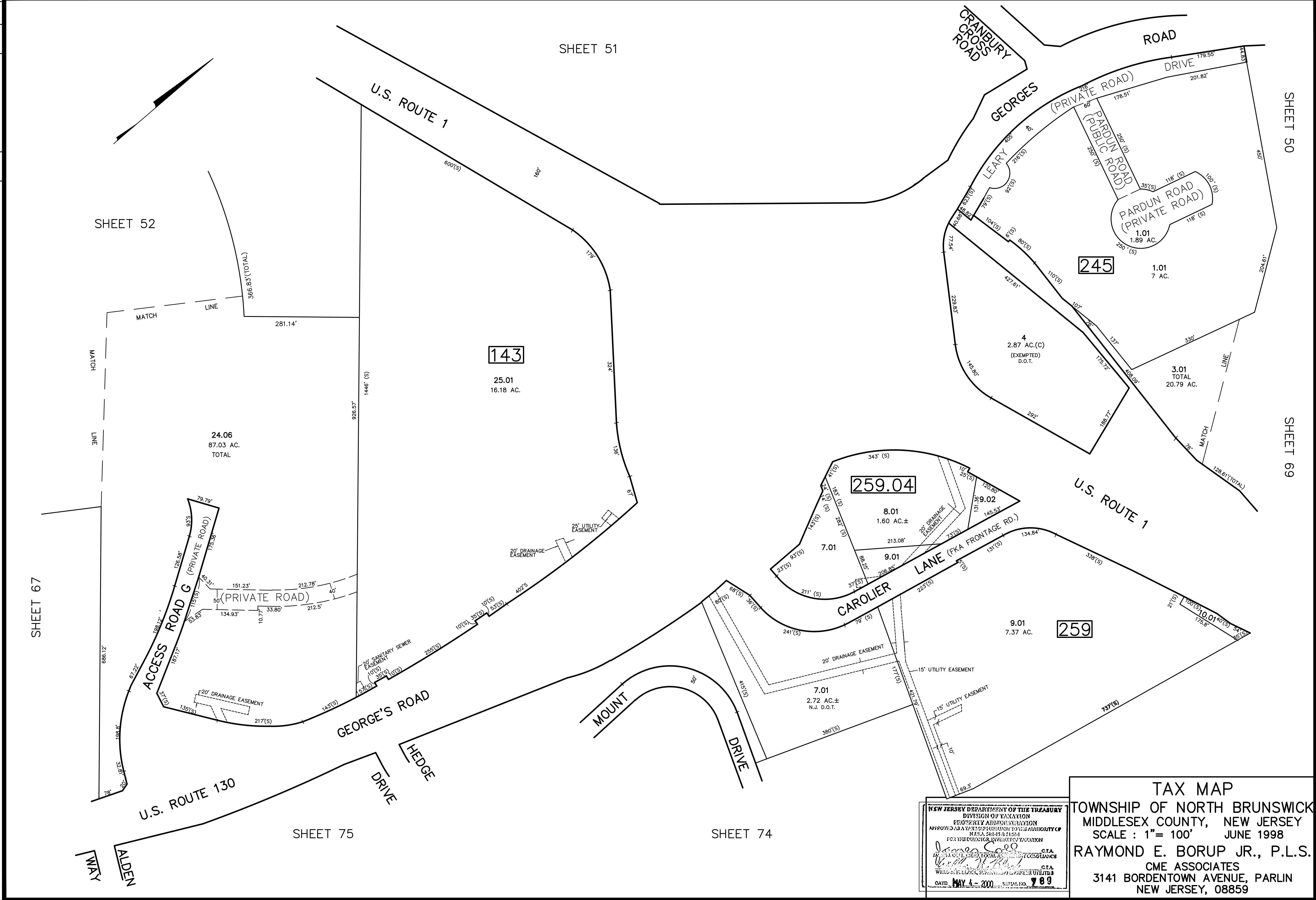


REVISED	DESCRIPTION	REV. BY	CHK.
1/2021	BL 143 L24.05 SUBDIVISION FRONTAGE RD. CHG TO CAROLIER LA	R.R.	
3/2011	EASE TO UTILITY	R.R.	
4/2006	EASE TO UTILITY	R.R.	
	BLK 259 LOTS 1, 2, 25 & 26		
	BLK 143 LOTS 24, 25 & 26		
	BLK 245 LOTS 1, 2, 25 & 26		
4/2004	BLK 259 LOTS 1, 2, 25 & 26 D.O.T. TAKING		



NEW JERSEY DEPARTMENT OF THE TREASURY  
 DIVISION OF TAXATION  
 PROPERTY APPRAISAL  
 APPROVED AS A TAX MAP PURSUANT TO THE AUTHORITY OF  
 N.J.A.C. 17:27 & 17:28  
 FOR THE DISTRICT OF MIDDLESEX COUNTY TAXATION  
*James S. ...* C.T.A.  
*William ...* C.T.A.  
 DATE: MAY 4 - 2000 SERIAL NO. 989

**TAX MAP**  
 TOWNSHIP OF NORTH BRUNSWICK  
 MIDDLESEX COUNTY, NEW JERSEY  
 SCALE : 1" = 100' JUNE 1998  
 RAYMOND E. BORUP JR., P.L.S.  
 CME ASSOCIATES  
 3141 BORDENTOWN AVENUE, PARLIN  
 NEW JERSEY, 08859