

1/2008	REVISED	DESCRIPTION	REV. BY	CHK.
1/2008	REVISED	DESCRIPTION	REV. BY	CHK.
5/2011	REVISED	DESCRIPTION	REV. BY	CHK.
6/2004	REVISED	DESCRIPTION	REV. BY	CHK.

SHEET 63

SHEET 64

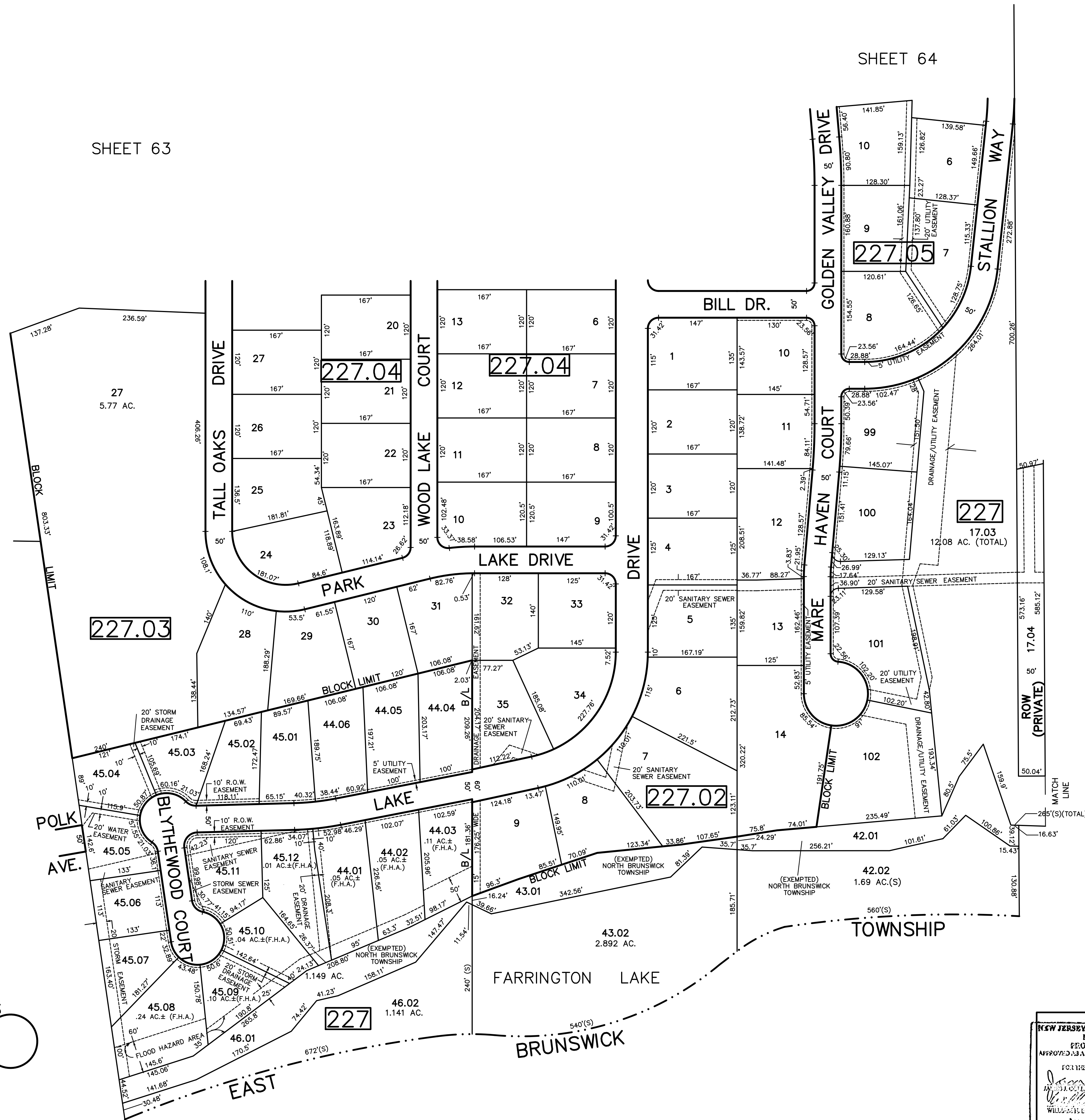
SHEET 79

SHEET 81

DEAR CROSS

LANE

SHEET 83



NEW JERSEY DEPARTMENT OF THE TREASURY
 DIVISION OF TAXATION
 PROPERTY APPRAISAL
 APPROVED AS A FINAL MAP FOR THE AUTHORITY OF
 THE DIRECTOR, DIVISION OF TAXATION
 JAMES S. ... C.T.A.
 WILLIAM ... C.T.A.
 DATE: MAY 4 - 2008 SERIAL NO. 789

TAX MAP
 TOWNSHIP OF NORTH BRUNSWICK
 MIDDLESEX COUNTY, NEW JERSEY
 SCALE : 1" = 100' JUNE 1998
 RAYMOND E. BORUP JR., P.L.S.
 CME ASSOCIATES
 3141 BORDENTOWN AVENUE, PARLIN
 NEW JERSEY, 08859