

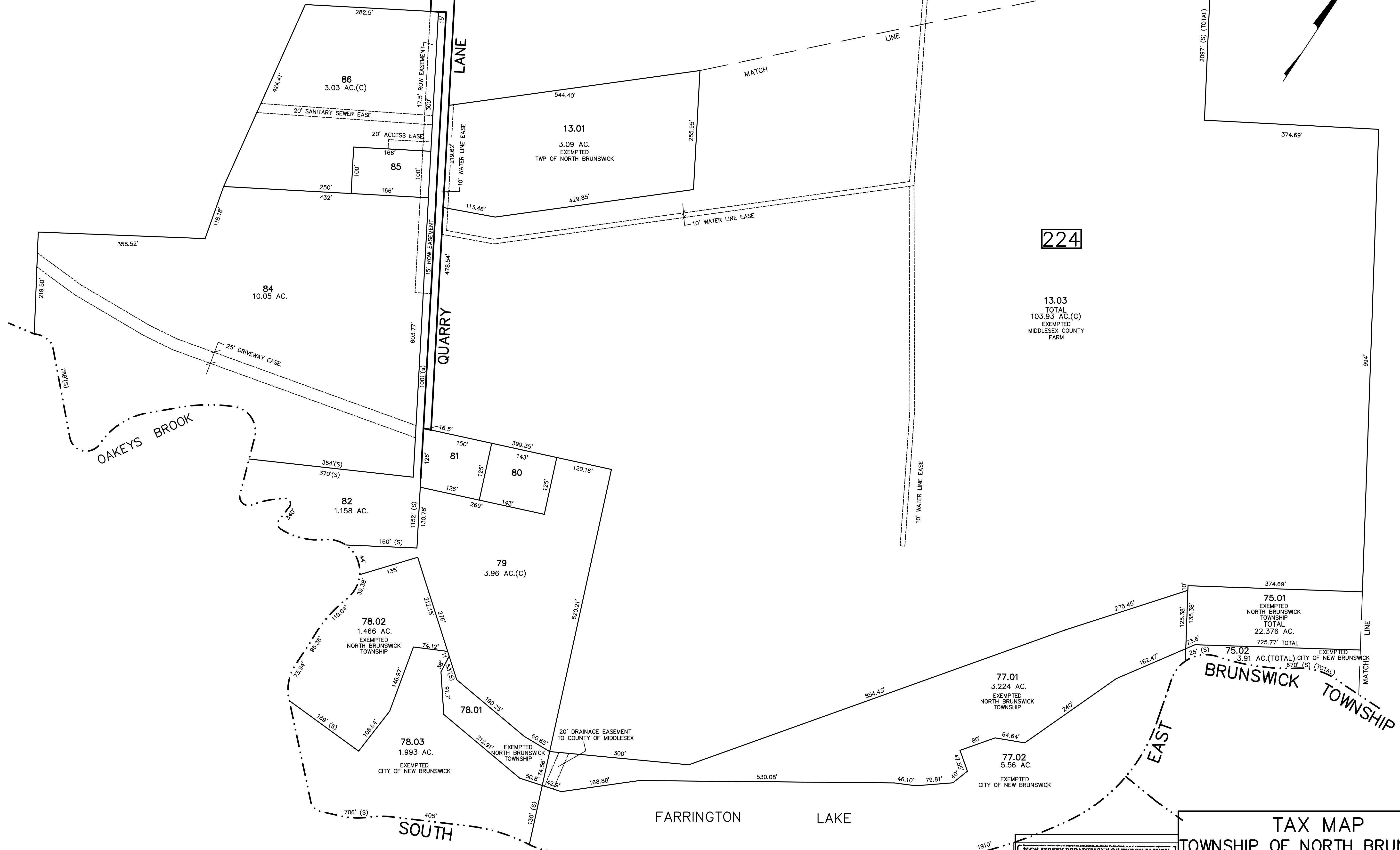
SHEET 60

SHEET 61

SHEET 81

SHEET 83

REVISED	DESCRIPTION	REV. BY	CHK.
1/2001	BLK 224, L82, 84, 85, 86 REVISED TO SHOW QUARRY LANE	R.R.	
1/2009	BLK 224, L82, 84, 85, 86 REVISED TO SHOW QUARRY LANE	R.R.	
2/2018	BLK 224, L82, 84, 85, 86 REVISED TO SHOW QUARRY LANE	R.R.	
2/2016	BLK 224, L82, 84, 85, 86 REVISED TO SHOW QUARRY LANE	R.R.	
2/2012	BLK 224, L13, 101, 13, 03 WATER EASE, ADDED	R.R.	
4/2004	BLK 224, LOT 13 SUBDIVISION	R.R.	



224

13.03
TOTAL
103.93 AC.(C)
EXEMPTED
MIDDLESEX COUNTY
FARM

TAX MAP
TOWNSHIP OF NORTH BRUNSWICK
MIDDLESEX COUNTY, NEW JERSEY
SCALE: 1" = 100' JUNE 1998
RAYMOND E. BORUP JR., P.L.S.
CME ASSOCIATES
3141 BORDENTOWN AVENUE, PARLIN
NEW JERSEY, 08859

NEW JERSEY DEPARTMENT OF THE TREASURY
 DIVISION OF TAXATION
 PROPERTY ADMINISTRATION
 APPROVED AS A TRUE AND CORRECT COPY TO THE AUTHORITY OF
 N.J.S.A. 54:15-28.1(d)(1)
 FOR THE DIRECTOR, DIVISION OF TAXATION
 James S. ... C.T.A.
 ... C.T.A.
 DATE: MAY 4, 2000 SERIAL NO. 789