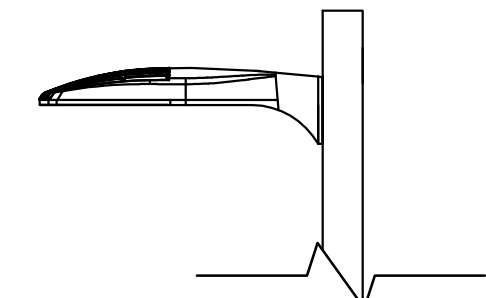
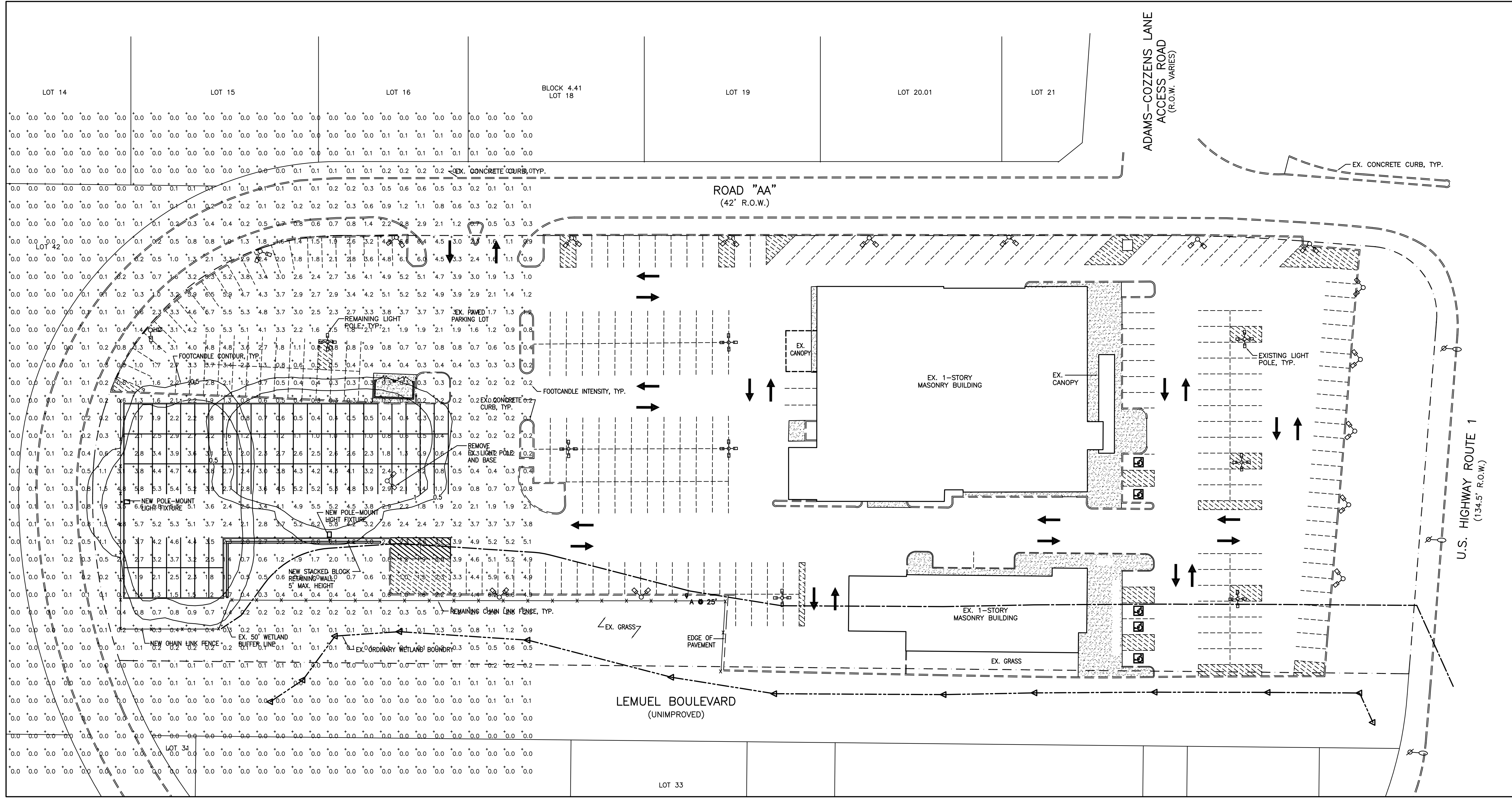


REFERENCES

LIGHTING & LANDSCAPING PLAN DRAWING S-5, REVISION 2, DATED MARCH 21, 2008, PREPARED BY KURT J. LUDWIG, AIA, INC., 77 NORTH MAIN STREET, MILLTOWN, NJ 08850.

REV	REVISION DESCRIPTION	DATE
0	FOR PLANNING BOARD APPROVAL.	13AUG20
1	REVISE LOTS.	23FEB21



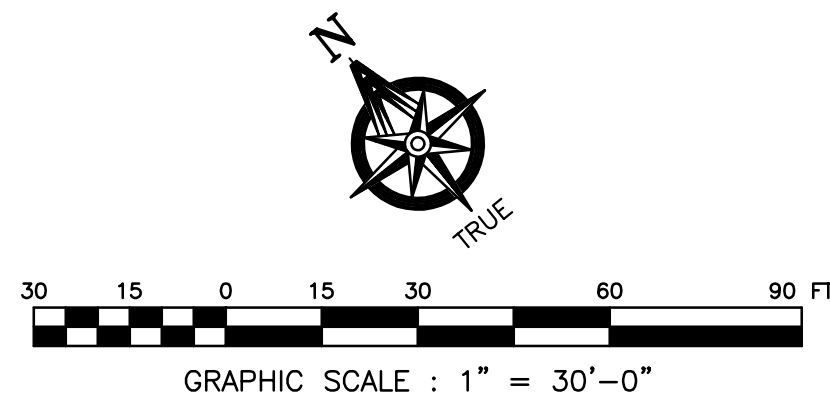
POLE-MOUNTED LIGHT DETAIL

AMENDED SITE PLAN APPLICATION
MALOUF CHEVY/CADILLAC
1975 U.S. ROUTE #1 SOUTH
BLOCK 4.50, LOTS 22.02,
22.03, 23-27, 27.01 & 28
NORTH BRUNSWICK, NEW JERSEY

RONALD J. SADOWSKI, P.E.
ENGINEERING & CONSTRUCTION MANAGEMENT
10 EDWARD AVENUE
EDISON, NEW JERSEY 08820
(732) 744-6392
ronsadowski@verizon.net

PROPOSED LIGHTING PLAN

DRAWN CHECKED	RJS RJS	SCALE DATE	AS NOTED 01JUL20
PROJECT NO.			S20060
DRAWING NO.			4



Schedule								
Symbol	Label	QTY	Manufact urer	Catalog Number	Description	Lumens per	LLF	Wattage
	A	2	Lithonia Lighting	DSX2 LED P5 40K TFTM MVOLT HS	DSX2 LED P5 40K TFTM MVOLT with houseside shield	29630	0.9	321

Statistics						
Description	Symbol	Avg	Max	Min	Max/Min	Avg/Min
OVERALL @ GRADE	+	1.1 fc	7.7 fd	0.0 fd	N/A	N/A

Ronald J. Sadowski
RONALD J. SADOWSKI
PROFESSIONAL ENGINEER
NJPE #38261