

PROPOSED WAREHOUSE FOR: DMS SERVICES LLC.

NORTH BRUNSWICK, NEW JERSEY

PROJECT CONTACTS

ARCHITECT
FELDMAN AND FELDMAN ARCHITECTS
1670 RT.34 N
WALL, NEW JERSEY 07727

PH 732 761 8182

PROJECT INFORMATION

DESCRIPTION
(2) NEW 1-STORY WAREHOUSES

SITE
BLOCK: 140.01 LOTS: 5.02 & 7.01
NORTH BRUNSWICK, NEW JERSEY

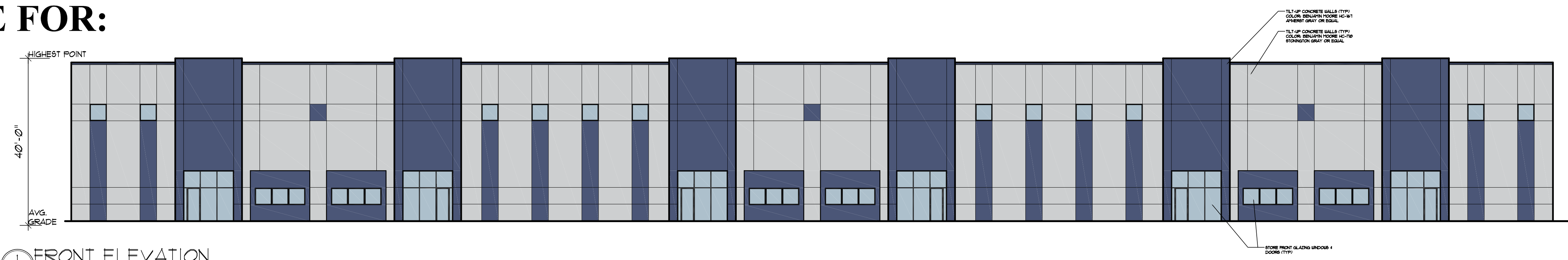
APPLICABLE BUILDING CODE
IBC 2018 NEW JERSEY EDITION

OCCUPANCY GROUP
S-STORAGE

SQUARE FOOTAGE CALCULATIONS

BUILDING 1 WAREHOUSE AREA 38,960 SF
BUILDING 1 OFFICE AREA 4,350 SF
BUILDING 1 TOTAL AREA 43,310 SF

BUILDING 2 WAREHOUSE AREA 38,850 SF
BUILDING 2 OFFICE AREA 4,350 SF
BUILDING 2 TOTAL AREA 43,200 SF

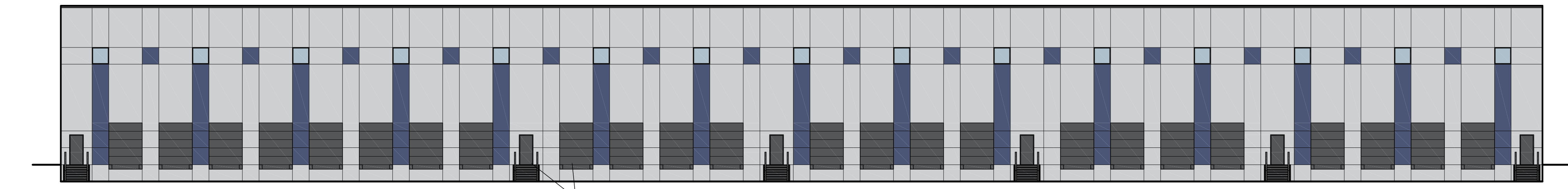


1 FRONT ELEVATION
SCALE: 1/16" = 1'-0"

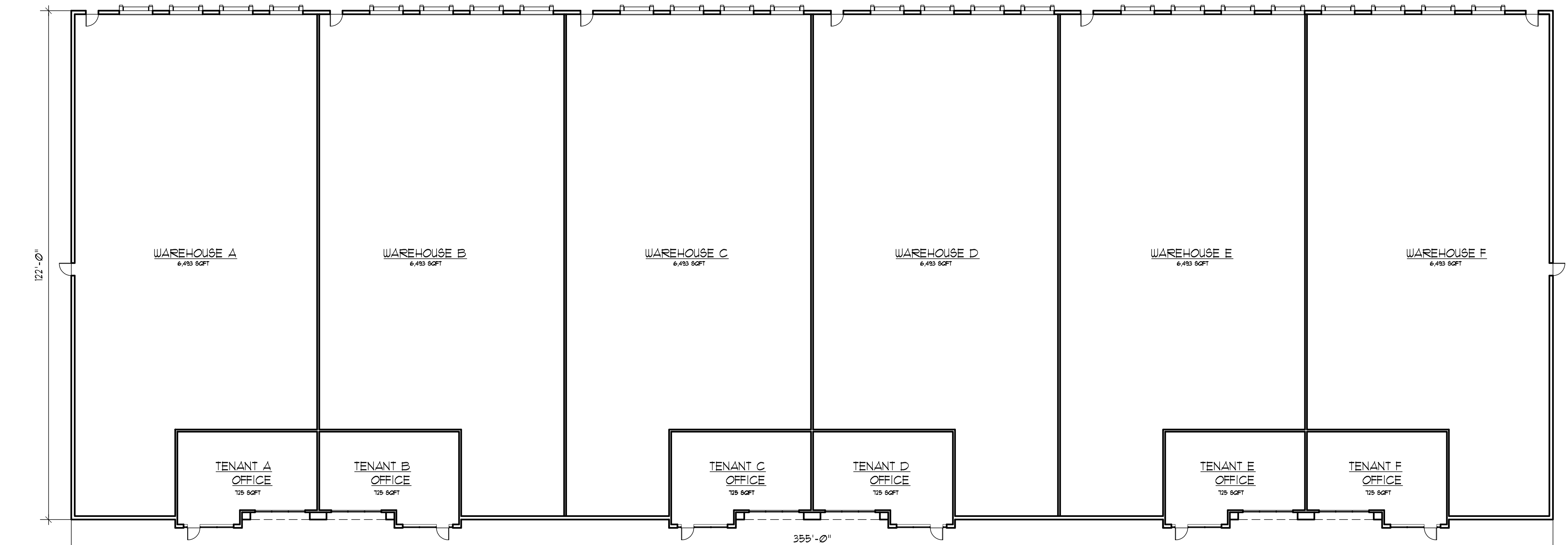


2 RIGHT ELEVATION
SCALE: 1/16" = 1'-0"

3 LEFT ELEVATION
SCALE: 1/16" = 1'-0"



4 REAR ELEVATION
SCALE: 1/16" = 1'-0"



5 FLOOR PLAN - 43,310 SF
SCALE: 1/16" = 1'-0"

ISSUED FOR REVIEW:
02-22-2021

DAVID H. FELDMAN, R.A., AIA
N.J. ARCHITECT # 14118 F.L. ARCHITECT # 42
PA-RS-00211 PA-RS-00211
PA-RS-00211 PA-RS-00211
PA-RS-00211 PA-RS-00211
PA-RS-00211 PA-RS-00211
PA-RS-00211 PA-RS-00211
PA-RS-00211 PA-RS-00211
PA-RS-00211 PA-RS-00211



PRELIMINARY DESIGN FOR:
DMS SERVICES LLC
LIVINGSTON AVE
NORTH BRUNSWICK, NEW JERSEY

BUILDING 1
ELEVATIONS &
FLOOR PLAN

PROJECT: 20210
DWN BY: HT
SHEET 1 OF 2

A1

Documents prepared by the Architect are instruments of service for use solely with respect to this project. The Architect shall retain all common law, statutory and other reserved rights, including the copyright. The Owner shall not reuse or permit the reuse of the Architect's documents except by mutual agreement in writing.