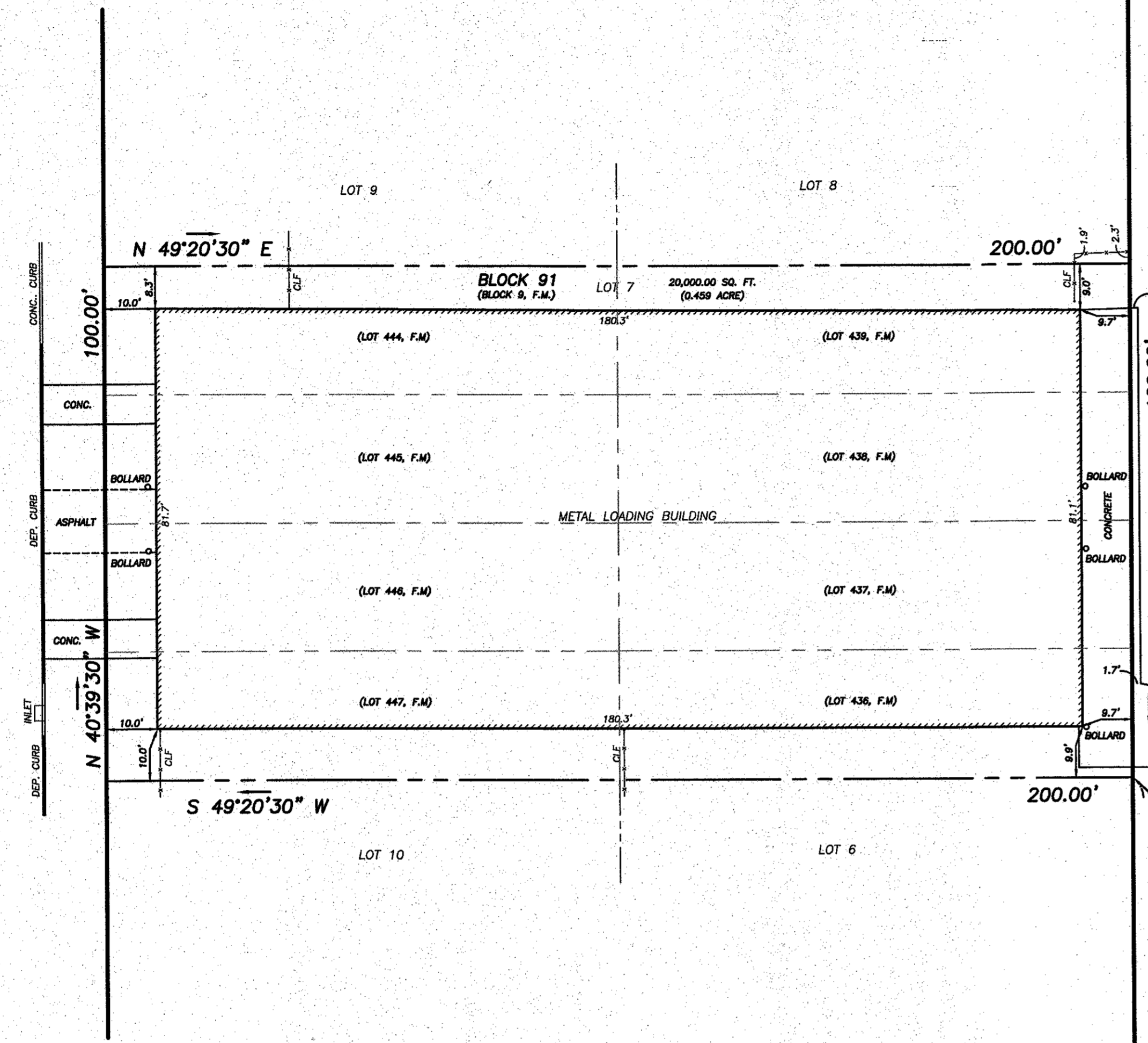


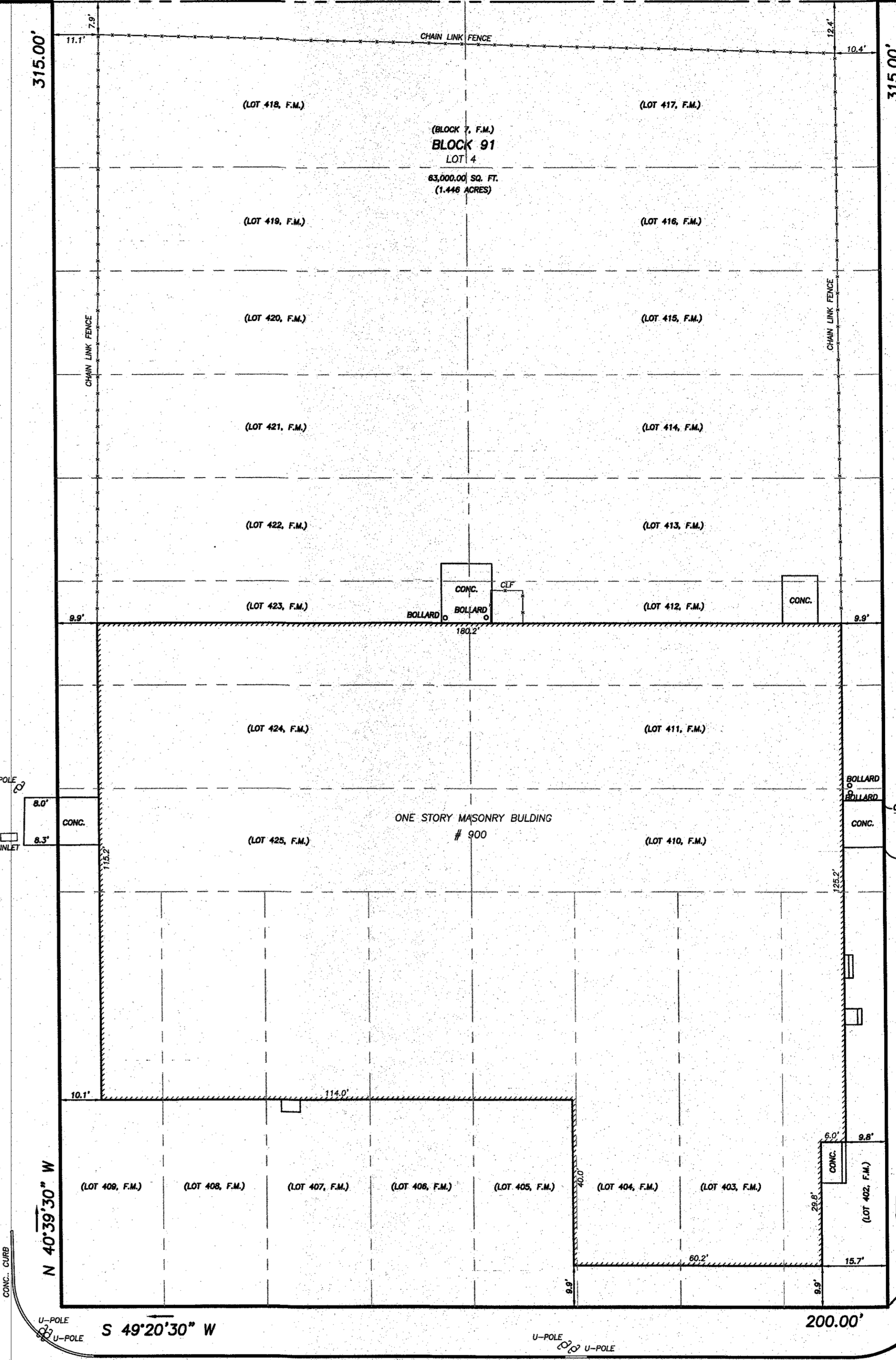
14TH (60' ROW) STREET



13TH (60' ROW) STREET

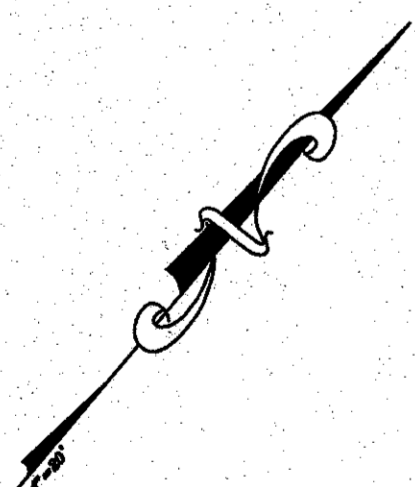
JOYCE KILMER (60' ROW) AVENUE

N 49°20'30" E



12TH (60' ROW) STREET

JOYCE KILMER (60' ROW) AVENUE



THIS SURVEY IS CERTIFIED TO: 900 JOYCE KILMER AVENUE, LLC; 1213 JOYCE KILMER ASSOCIATES, LLC; VINTAGE TITLE SERVICES, LLC; OLD REPUBLIC NATIONAL TITLE INSURANCE COMPANY; BUSCH & BUSCH, LLP; MARK N. BUSCH, ESQ.

A WRITTEN WAIVER AND DIRECTION TO SET PROPERTY CORNER MARKERS HAS BEEN OBTAINED FROM THE ULTIMATE USER PURSUANT TO P.L. 2003, c.14 (C45:8-36.3) AND N.J.A.C. 13:40-5.1(d).

BEING COMMONLY KNOWN AS 900 JOYCE KILMER AVENUE, NORTH BRUNSWICK, NEW JERSEY.

BEING KNOWN AND DESIGNATED AS LOTS 4 & 7 IN BLOCK 91 AS SHOWN ON THE TAX MAP OF NORTH BRUNSWICK TOWNSHIP, SHEET NO. 25.

BEING ALSO KNOWN AS LOTS 433-439 & 444-447 IN BLOCK 9 AND LOTS 402-425 IN BLOCK 7 AS SHOWN ON A MAP ENTITLED: "A MAP OF BRUNSWICK HEIGHTS", DATED JUNE 9, 1874 AND FILED IN THE MIDDLESEX COUNTY CLERK'S OFFICE AS MAP NO. 60 IN FILE NO. 60.

THIS SURVEY IS CERTIFIED TO:
 900 JOYCE KILMER AVENUE, LLC;
 1213 JOYCE KILMER ASSOCIATES, LLC;
 VINTAGE TITLE SERVICES, LLC;
 OLD REPUBLIC NATIONAL TITLE INSURANCE COMPANY;
 BUSCH & BUSCH, LLP;
 MARK N. BUSCH, ESQ.

1	REVISE CERTIFICATIONS	EPP	05-30-17
NO.	REVISION	DRAWN	DATE
PLAN OF SURVEY PREPARED FOR 900 JOYCE KILMER AVENUE LOTS 4 & 7 IN BLOCK 91 TOWNSHIP OF NORTH BRUNSWICK, MIDDLESEX COUNTY, NEW JERSEY			
FLETCHER ENGINEERING, INC. ENGINEERS • SURVEYORS • PLANNERS P.O. Box 329 • Fields, NJ 08863 • Phone 732-738-8809 • Fax 732-738-6727			
SCALE	DATE	FILE NO.	MAP NO.
1"=20'	05-08-17	01217	60-60
DRAWN	CHECKED	DWG NO.	SHEET
EPP			1 OF 1