

APPEL DESIGN GROUP - FILENAME: P:\CLIENT\GH-MAINSTREET NB RETAIL H3\DWG\BUILDING H3 - ELEVATIONS - 111521\_RECOVER.DWG PLOT DATE: 02/22/2022 11:16 AM BY: KP

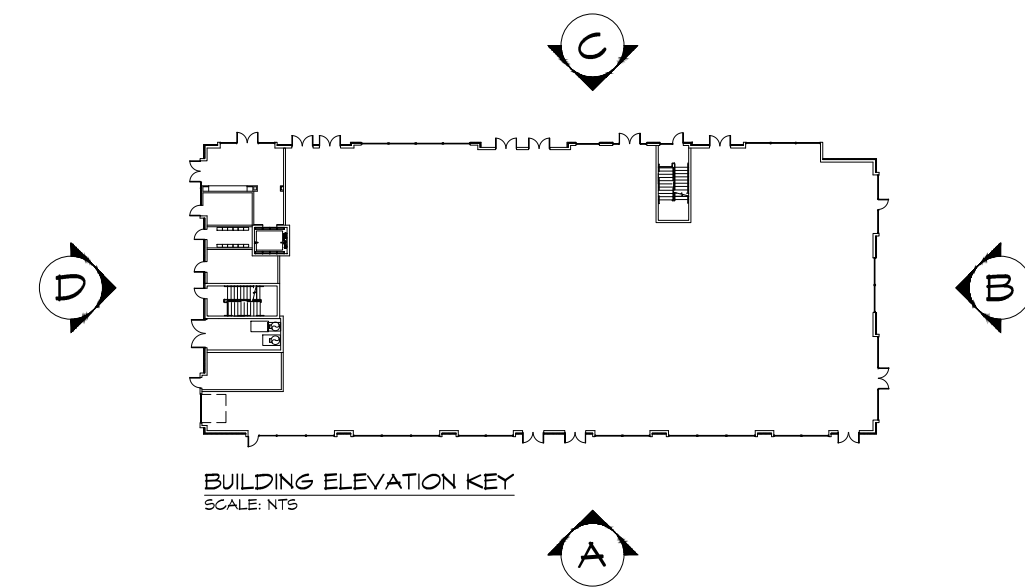


**A WEST (ROUTE 1) ELEVATION**  
SCALE: 1/8" = 1'-0"



**B SOUTH (MAIN STREET) ELEVATION**  
SCALE: 1/8" = 1'-0"

- ELEVATION KEY NOTES**  
NOT ALL NOTES MAY APPLY TO THIS SHEET
1. VINYL WINDOWS (SEE SCHEDULE)
  2. STOREFRONT ENTRY SYSTEM (SEE SHOP DRAWINGS)
  3. POWDER COATED ALUMINUM RAILING SYSTEM
  4. PREF. ALUMINUM CORNICE
  5. AZEK PANEL AND TRIM
  6. PRECAST WINDOW SILL AND HEAD
  7. DECORATIVE BRACKETS
  8. VINYL SIDING
  9. MODULAR CAST STONE VENEER
  10. BRICK VENEER
  11. VERTICAL VINYL SIDING
  12. METAL ROOFING
  13. ROOF SCUPPER. SEE ROOF PLAN.
  14. STAINLESS STEEL CABLE RAILING/GUARD SYSTEM.

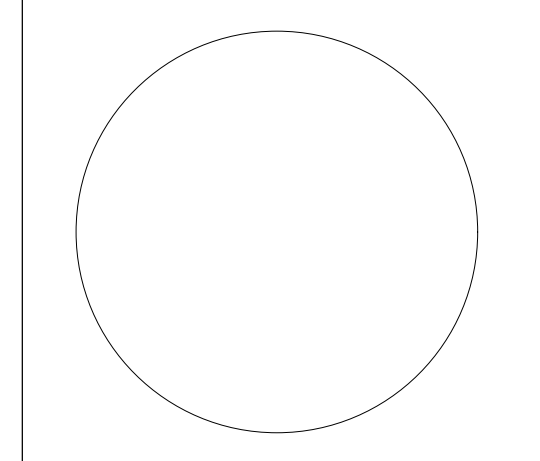


**APPEL DESIGN GROUP**  
ARCHITECTS

2444 MORRIS AVE.  
LUNEN, NJ 07083  
TEL: (908) 686-2230  
FAX: (908) 964-7425

**MAINSTREET NB**  
**BUILDING H-3**  
**NORTH BRUNSWICK**  
**NEW JERSEY**

NO.	REVISION	BY	DATE
△	ISSUE FOR REVIEW	MM	11-19-21
△	ISSUE FOR REVIEW	MPM	12-03-21
△	ISSUE FOR REVIEW	MPM	01-11-22
△	ISSUE FOR REVIEW	MPM	01-28-22



LAURANCE D. APPEL, R.A. N.J. # AI-12148  
N.Y. - 025018  
PA - RA-014580-B

**EXTERIOR ELEVATIONS**

DRAWN BY: MM  
CHECKED BY:  
CLIENT: GH MAINSTREET NB  
DATE: 11-17-21

DRAWING:  
**A-2.1**  
COMM. #: H-3