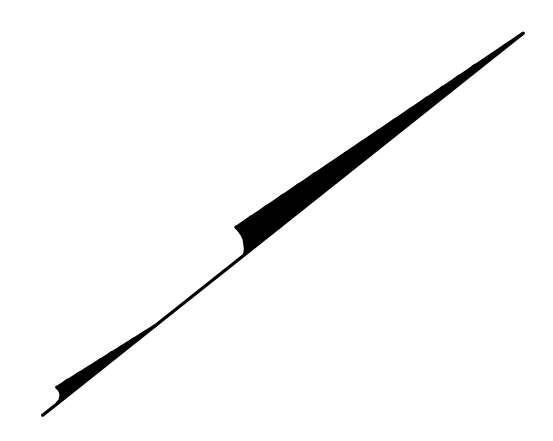
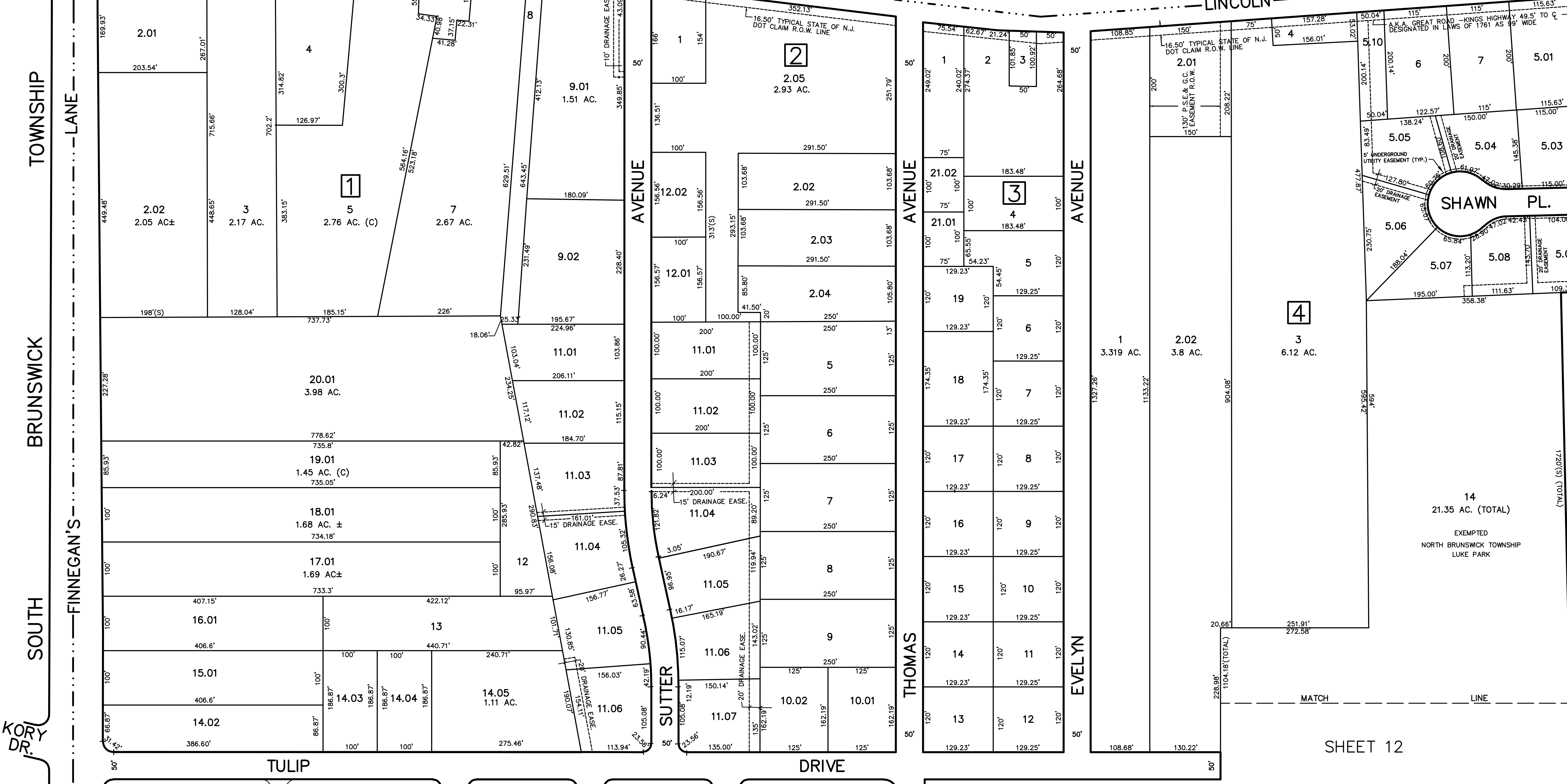


4/2002	REV. BY	CHK.	REV. BY	CHK.
4/2002	REV. BY	CHK.	REV. BY	CHK.
4/2002	REV. BY	CHK.	REV. BY	CHK.
4/2002	REV. BY	CHK.	REV. BY	CHK.
4/2002	REV. BY	CHK.	REV. BY	CHK.
4/2002	REV. BY	CHK.	REV. BY	CHK.
4/2002	REV. BY	CHK.	REV. BY	CHK.
4/2002	REV. BY	CHK.	REV. BY	CHK.
4/2002	REV. BY	CHK.	REV. BY	CHK.
4/2002	REV. BY	CHK.	REV. BY	CHK.



STATE FRANKLIN TOWNSHIP SOMERSET COUNTY LINCOLN HIGHWAY 27



TULIP DRIVE THOMAS AVENUE EVELYN AVENUE
 ASPEN DRIVE (Private Road)
 STAGHORN DRIVE DOGWOOD DRIVE STAGHORN DRIVE
 KORY DR. FINNEGAN'S LANE SHAWN PL. SHAWN CT.

SHEET 13

SHEET 12

NEW JERSEY DEPARTMENT OF THE TREASURY
 DIVISION OF TAXATION
 PROPERTY ADMINISTRATION
 APPROVED AS A TAX MAP PURSUANT TO THE AUTHORITY OF
 N.J.S.A. 54:15-8.4(2)(a)
 FOR THE DIRECTOR, DIVISION OF TAXATION
James S. ... C.T.A.
William ... C.T.A.
 DATE: MAY 4 - 2000 SERIAL NO. 789

TAX MAP
 TOWNSHIP OF NORTH BRUNSWICK
 MIDDLESEX COUNTY, NEW JERSEY
 SCALE : 1" = 100' JUNE 1998
 RAYMOND E. BORUP JR., P.L.S.
 CME ASSOCIATES
 3141 BORDENTOWN AVENUE, PARLIN
 NEW JERSEY, 08859

SHEET 2

BLOCK LIMIT

4

2

1

3

SHAWN PL.

SHAWN CT.