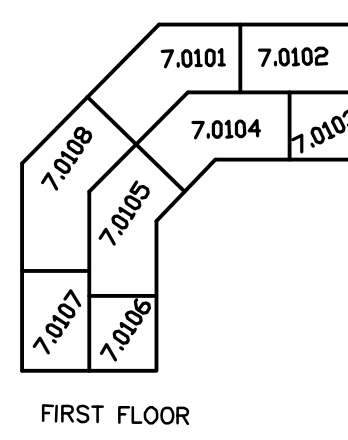
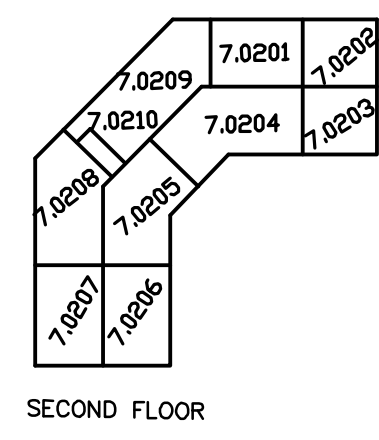


2/2018	REV. BY	CHK.	REV. BY	CHK.
5/2011	REV. BY	CHK.	REV. BY	CHK.
5/2011	REV. BY	CHK.	REV. BY	CHK.
5/2011	REV. BY	CHK.	REV. BY	CHK.
5/2011	REV. BY	CHK.	REV. BY	CHK.
5/2011	REV. BY	CHK.	REV. BY	CHK.
5/2011	REV. BY	CHK.	REV. BY	CHK.
5/2011	REV. BY	CHK.	REV. BY	CHK.
5/2011	REV. BY	CHK.	REV. BY	CHK.
5/2011	REV. BY	CHK.	REV. BY	CHK.



FIRST FLOOR CONDO AREA (SQ. FT.)	
7.0101	3,066 Sq Ft.
7.0102	2,219 Sq Ft.
7.0103	2,073 Sq Ft.
7.0104	1,293 Sq Ft.
7.0105	1,316 Sq Ft.
7.0106	1,518 Sq Ft.
7.0107	1,928 Sq Ft.
7.0108	2,723 Sq Ft.



SECOND FLOOR CONDO AREA (SQ. FT.)	
7.0201	1,446 Sq Ft.
7.0202	2,343 Sq Ft.
7.0203	1,763 Sq Ft.
7.0204	1,679 Sq Ft.
7.0205	1,609 Sq Ft.
7.0206	1,549 Sq Ft.
7.0207	2,112 Sq Ft.
7.0208	2,065 Sq Ft.
7.0209	2,740 Sq Ft.
7.0210	250 Sq Ft.

SKETCH A
BLOCK 4.03
 LOT 7.01 (COMMON AREA)
 CONDO FLOOR PLAN AND LOT NUMBER
 N.T.S.

NEW JERSEY DEPARTMENT OF THE TREASURY
 DIVISION OF TAXATION
 PROPERTY ADMINISTRATION
 APPROVED AS A TAX MAP PURSUANT TO THE AUTHORITY OF
 N.J.S.A. 54:15-8 & 54:15-9
 FOR THE DIRECTOR, DIVISION OF TAXATION

James S. ... C.T.A.
... C.T.A.
 WILLIAMS BROTHERS SURVEYING & ENGINEERING UTILITIES
 DATE: MAY 4 - 2011 SERIAL NO. 789

TAX MAP
 TOWNSHIP OF NORTH BRUNSWICK
 MIDDLESEX COUNTY, NEW JERSEY
 SCALE : 1" = 100'
 JUNE 1998
RAYMOND E. BORUP JR., P.L.S.
 CME ASSOCIATES
 3141 BORDENTOWN AVENUE, PARLIN
 NEW JERSEY, 08859