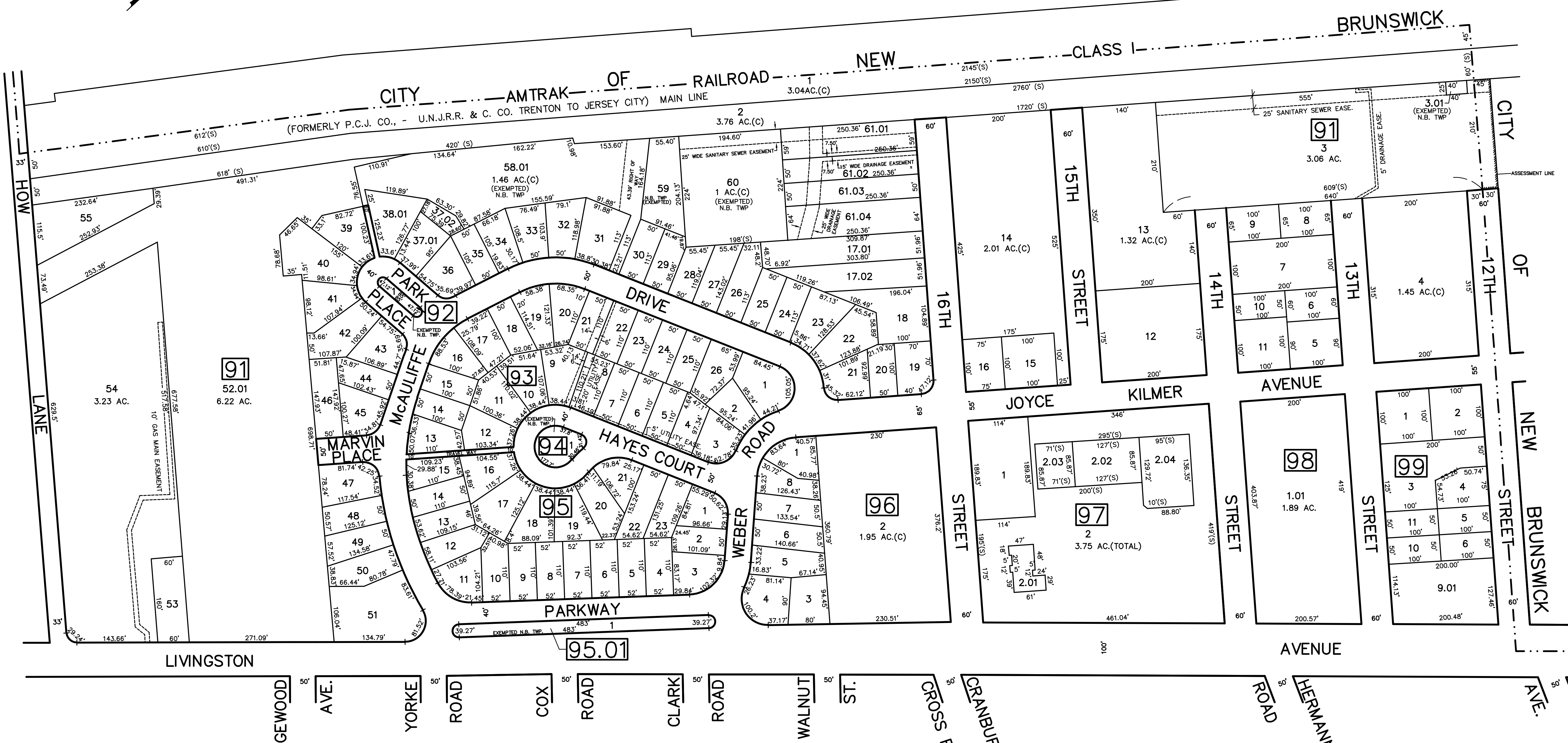
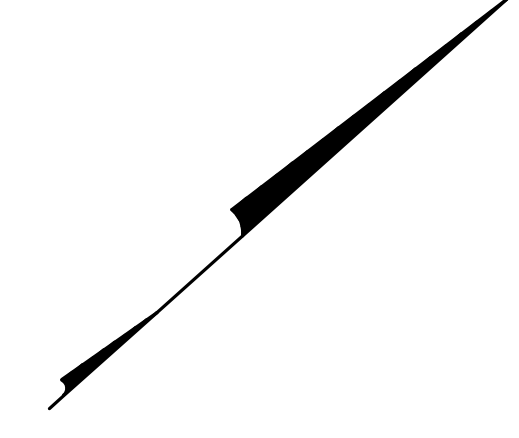


REV.	BY	CHK.	DESCRIPTION
4/2022	BLK 91, L3 DRAINAGE EASE. ADDED	R.R.	
1/2020	BLK 91, L3 DRAINAGE EASE. ADDED & REVISED	R.R.	
4/2004	BLK 97 LOTS 2,3,4 CONSOLIDATED BLK 99 LOTS 7,8,9 CONSOLIDATED NEW LOT 9.01	R.R.	



SHEET 24

SHEET 28

SHEET 27

NEW JERSEY DEPARTMENT OF THE TREASURY  
DIVISION OF TAXATION  
PROPERTY ADJUSTMENT  
APPROVED AS A BASIS FOR REVISION TO THE AUTHORITY OF  
N.J.A.C. 17:27-1 TO 17:27-4  
FOR THE DIRECTOR, DIVISION OF TAXATION

*James Spill* C.T.A.  
WILLIAM H. BLACK, SUPERVISOR OF OWNER UTILITIES  
DATE: MAY 4 - 2000 SERIAL NO. 789

**TAX MAP**  
TOWNSHIP OF NORTH BRUNSWICK  
MIDDLESEX COUNTY, NEW JERSEY  
SCALE : 1"= 100' JUNE 1998  
RAYMOND E. BORUP JR., P.L.S.  
CME ASSOCIATES  
3141 BORDENTOWN AVENUE, PARLIN  
NEW JERSEY, 08859