

REVISED	DESCRIPTION	REV. BY	CHK.
6/2002	BLK 140.01 L&L4 CONDO INC. CHG		
2/2001	BLK 140.01 L&L4 CONDO INC. CHG		
1/2001	BLK 140.01 L&L4 CONDO INC. CHG		
1/2001	BLK 140.01 L&L4 CONDO INC. CHG		
1/2001	BLK 140.01 L&L4 CONDO INC. CHG		

SHEET 24

SHEET 29

SHEET 22

SHEET 29

SHEET 45

SHEET 31

U.S. ROUTE 1

U.S.

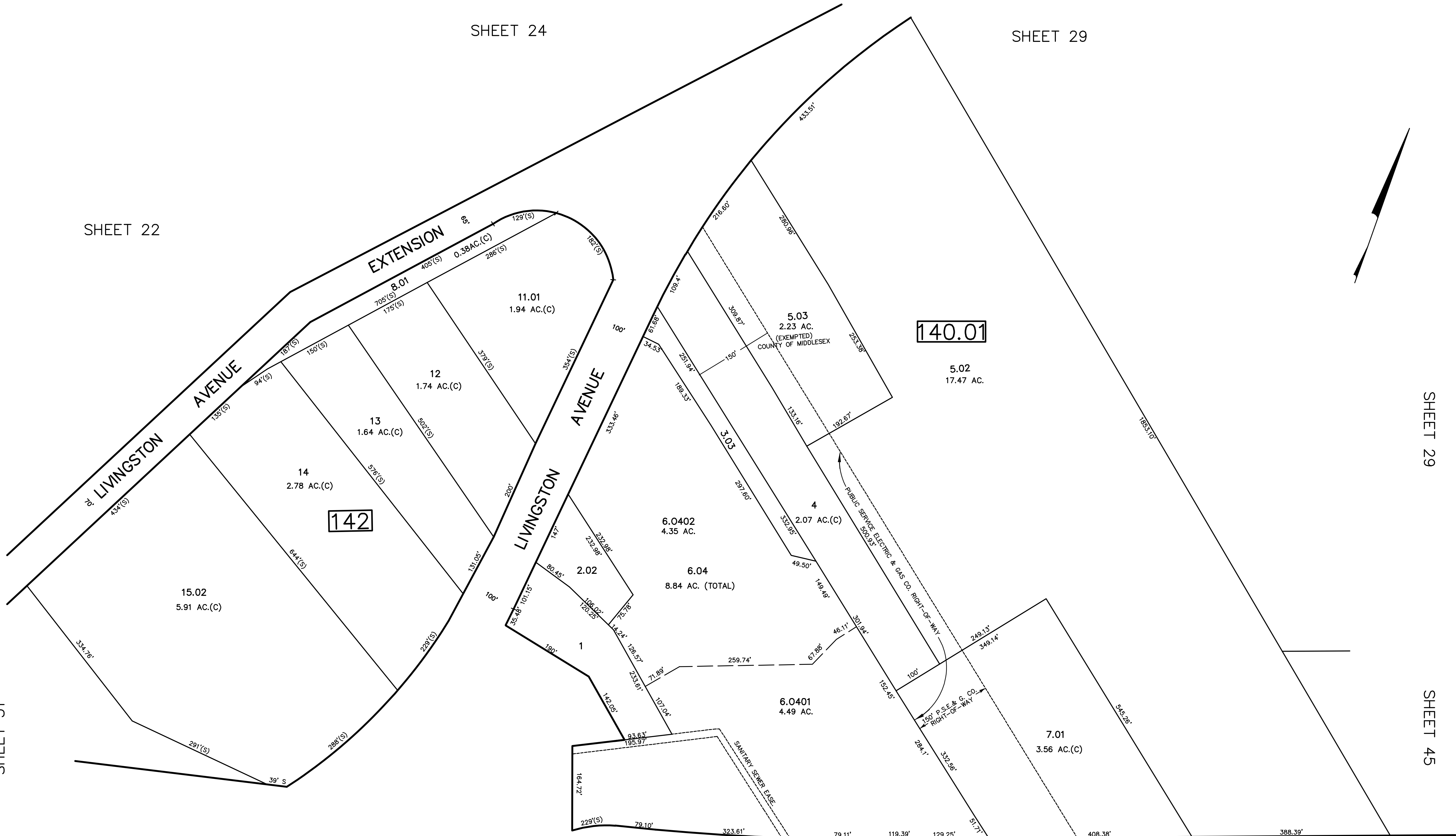
ROUTE 1

SHEET 44

BISHOP BLVD.

BOICE DR.

LIVINGSTON AVE. EXTENSION



NEW JERSEY DEPARTMENT OF THE TREASURY
 DIVISION OF TAXATION
 PROPERTY ADMINISTRATION
 APPROVED AS A TAX MAP PURSUANT TO THE AUTHORITY OF
 N.J.S.A. 17:27 & 17:28
 FOR THE DIRECTOR, DIVISION OF TAXATION
James S. ... C.T.A.
William H. Black, Jr. C.T.A.
 WILLIAM H. BLACK, SUPERVISOR OF WORKER UTILITIES
 DATE: MAY 4 - 2000 SERIAL NO. 769

TAX MAP
 TOWNSHIP OF NORTH BRUNSWICK
 MIDDLESEX COUNTY, NEW JERSEY
 SCALE : 1" = 100' JUNE 1998
 RAYMOND E. BORUP JR., P.L.S.
 CME ASSOCIATES
 3141 BORDENTOWN AVENUE, PARLIN
 NEW JERSEY, 08859